

# ONE SQUARE BLOCK IN JONESBORO ARKANSAS

S. CHURCH ST  
600

E. JACKSON AV  
200

E. MATTHEWS AVE  
200

CARSON ST  
600

History of the Buildings of St Roman's and Blessed Sacrament Church,  
School, Parish Hall, Holy Angels Convent and St Bernard's Hospital  
in Jonesboro, Arkansas

# Table of Contents

Preface .....	iv
Before the One Square Block – St. Roman’s on Cate Ave.....	1
The Seeds of the One Square Block Are Planted – 1890s.....	4
1897 - St Roman’s Church is Built .....	4
1898 - Holy Angels Convent is Built .....	5
One Square Block Map – End of 1890’s.....	6
A Growing Time – 1900’s .....	7
1900 - St Bernard’s Hospital is Established.....	7
1901 - Addition to St. Bernard’s Hospital .....	8
1906 - Addition to St. Bernard’s Hospital Opened.....	10
1906 – Holy Angels Convent Chapel is Built.....	11
1907 - New Church Rectory Selected, Existing Rectory Converted for St. Roman’s School.....	12
One Square Block Map – End of 1900’s .....	13
New Buildings for School, Convent and Hospital – 1920’s .....	14
1920 – Fire at House North of the Rectory.....	14
1922 – New St. Romans School Building.....	14
1923 – New St. Bernard’s Hospital Building .....	15
1923 – St. Roman’s School Basement Addition .....	15
1924 – Addition to the Parish Hall .....	15
1928 – Church Rectory Moved and Renovated .....	16
1929 – New Holy Angels Convent Building.....	17
One Square Block Map – End of 1920s.....	18
A New Name for the Parish – 1930’s .....	19
1933 – Blessed Sacrament Church is built .....	19
1935 – Fire Strikes.....	20
1938 – Blessed Sacrament Parish Hall is built.....	21
1938 – Holy Angels Convent Chapel Addition .....	22
One Square Block Map – End of 1930s.....	23
Making Progress - 1950’s .....	24
1952 – St. Bernard’s Hospital Addition .....	24
1954 - New Church Rectory .....	25
1957 – Aerial View of the One Block.....	26
One Square Block Map – End of 1950s.....	27
St Bernard’s Grows – 1960’s .....	28

- 1962 - Hospital Expansion..... 28
- 1962 - New Blessed Sacrament School Building ..... 29
- 1964 - Hospital Expansion..... 29
- 1968 - Parish Hall Remodeling and Expansion..... 29
- One Square Block Map – End of 1960s ..... 30
- Holy Angels Convent Moves Out of the One Square Block – 1970s ..... 31
  - 1974 - Holy Angels Convent Relocates North of Jonesboro ..... 31
  - 1975 - St Bernard’s East Wing Addition ..... 31
  - 1975 - St. Bernard’s Annex Building..... 31
  - 1976 - St. Bernard’s Northwest Addition..... 31
  - 1976 – Aerial View of the One Block..... 32
  - 1979 - Blessed Sacrament School – Enclosure of Bottom Floor ..... 32
  - 1979 - Blessed Sacrament Church Purchases Gas Station Property ..... 32
  - One Square Block Map – End of 1970s ..... 33
- Keeping The Pace - 1980s ..... 34
  - 1983 - St. Bernard’s North Wing Addition ..... 34
  - 1985 - Blessed Sacrament Parish Hall Addition ..... 34
  - One Square Block Map – End of 1980s ..... 35
- Expanding Services - 1990s ..... 36
  - 1990 – Reconciliation Room ..... 36
  - 1990 – East Wing Addition of Two Floors and Helipad..... 37
  - 1991 – Ben E. Owens Cancer Treatment Center..... 37
  - 1991 – Parking Garage ..... 37
  - 1994 – Aerial View of the One Block..... 39
  - 1999 - Heartcare Center ..... 39
  - One Square Block Map – End of 1990s ..... 40
- One Square Block - 2010s ..... 41
  - 2001 – Aerial View of the One Block..... 41
  - 2006 – Aerial View of the One Block..... 41
  - 2009 – Aerial View of the One Block..... 42
- Blessed Sacrament Parish Moves Out of the One Square Block - 2010s..... 43
  - 2010 – Aerial View of the One Block..... 43
  - 2013 – Aerial View of the One Block..... 44
  - 2015 – Aerial View of the One Block..... 45
  - 2016 & 2017 - Demolition of Blessed Sacrament Parish Buildings..... 46

2016 – Ben E. Owens Cancer Treatment Center Renovation and Expansion..... 47  
2018 – Heart Care Center Renovation and Expansion..... 47  
2019 – Major Addition to St. Bernard’s Hospital ..... 47  
2019 – Aerial View of the One Block..... 49  
2021 – Aerial View of the One Block..... 50  
One Square Block Map – End of 2010s..... 51  
Misc Pictures ..... 52  
Revisions ..... 63

## Preface

My family moved to Jonesboro, AR in the spring of 1974 and we attended Blessed Sacrament Church. My brothers, sister and myself attended Blessed Sacrament School. I was a member the Boy Scout Troop 4, which met in the parish hall where I earned my Eagle in 1984. During my first year at Blessed Sacrament School in 1974, the convent, chapel and 1906 hospital building were there. During the next school year, they tore down the 1898 convent, 1906 chapel and 1906 hospital building. When the demolition of the building was to be done, all of the students were taken to the parish hall. After it was down, they opened the back doors on the stage and the Sister's all had tears in their eyes when they saw the chapel was gone. For the next two years we viewed, from our classrooms, the new addition being built at St. Bernard's Hospital. This planted the seeds of my interest in the block.

My desire to learn the history of this One Square Block started in the late 2010's when I purchased and read the three books that Sr. Henrietta Hockle, OSB wrote on the history of the Blessed Sacrament Parish, St. Bernard's Hospital and Olivetan Benedictine Sisters. I was amazed when I read in her books the different buildings and history of our parish. I then wondered where did these buildings exist on the grounds, she didn't include any maps or descriptions of where they were. I started searching the internet to find any information that I could. The first thing I found was where the first buildings were located. I found these in Sanborn Maps. These maps were created in late 1800's and early 1900's to allow fire insurance companies to assess their total liability in urbanized areas of the US and are very detailed. The maps in this publication are not Sanborn Maps, I created these on my own. I then found many pictures on the internet, Sr. Henrietta Hockle's books and the online Arkansas Catholic newspaper archives.

The books that Sr. Henrietta Hockle wrote were very detailed about the history and this publication intends to enhance details that she describes in her books. I do not have the rights to any of the pictures in this publication and I have copied information from many sources. For this reason, this publication is free and is intended for educational purposes only. I have tried my best to find as much information as possible on the internet, but there are gaps. If you or someone has more accurate information, additional information or pictures, please contact me and I will update this publication. This One Square Block will always be changing as it has for over 100 years.

Many people that live or have lived in Jonesboro have seen the church, school, convent and hospital from passing by over the years. Many buildings have changed or disappeared due to the ever-growing St. Bernard's Hospital. I hope you enjoy reading about the history of the buildings and how this One Square Block changed over the years. Although I am documenting the history of the buildings, it is people that make the church parish, school, convent and hospital what they are.

-- Billy Donovan  
billy@spiritspecialties.com

## Before the One Square Block – St. Roman’s on Cate Ave

Father Weibel, who was pastor at Pocahontas, contracted a serious illness, which impaired his health and he decided he would return to Switzerland. While on his way to Little Rock to obtain a temporary leave from the Bishop, he visited Jonesboro, Arkansas. The few catholic citizens in Jonesboro persuaded him to remain with them in Jonesboro for the winter. He agreed, and in spite of his illness, he began to collect funds for a church building in Jonesboro. Four lots were purchased on Cate Avenue and in February, 1885, the church building was started. It was completed and equipped with necessary furnishings by the latter part of May 1885. The church was 40 x 20 feet. A small house was also fitted up for the priest and the four lots fenced. The church was named on May 31<sup>st</sup> in honor of St. Roman, the Abbot, and in memory of Father Weibel’s brother, Brother Roman. While building the church, Father Weibel returned to Pocahontas and the Jonesboro church became a mission to Pocahontas.

In the spring of 1886, a Catholic school was established in Jonesboro.

In December of 1887, found Benedictine Nuns founded a convent in Pocahontas. Father Weibel, in April 1889, returned to Jonesboro. One the first priorities for him was to build a convent for the Sisters. The building was a two-story brick building with a basement and hot air furnace. In 1890 the Convent was completed and blessed on October 26, 1890.

The growth of the congregation required that an addition be built on to the church in May, 1894. The addition was started on September 1894.

Tragedy struck on May 15, 1896 when lightning struck the front tower of the church during a storm. Jonesboro, at that time, had no adequate firefighting facilities so the fire spread rapidly. In spite of the heroic efforts of volunteer firemen, the church, convent and school went up in flames. Once it was realized the buildings were going to burn to the ground, efforts to remove items from the building went into full swing, they removed furniture, clothing and other effects and protected the nearby buildings.

This was the end of St. Roman’s being on Cate Ave.



St. Roman’s Parish off Cate Ave  
Picture Source: *Parish On The Ridge*, Page 10

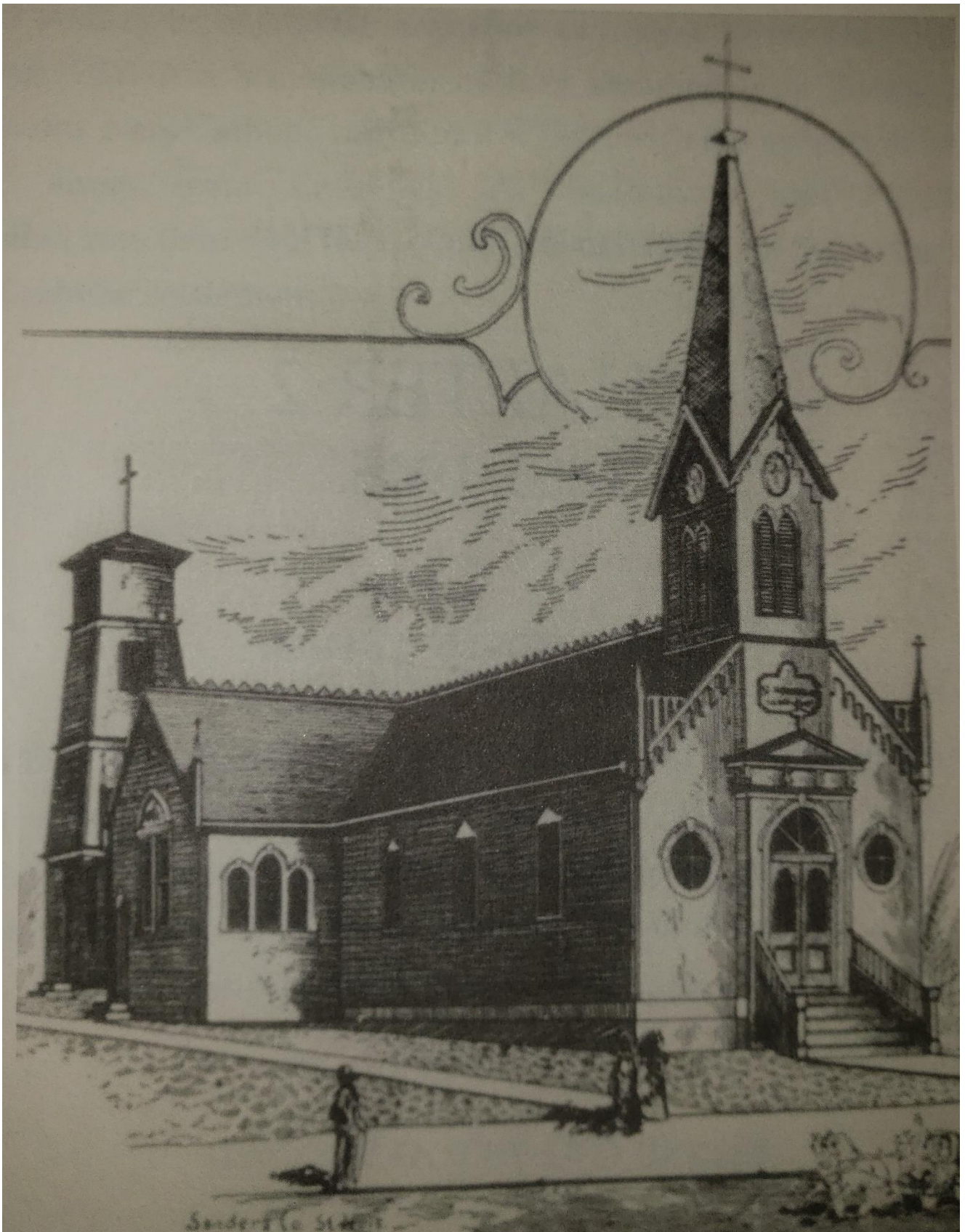


Illustration of St. Roman's Church  
Picture Source: *Parish On The Ridge*, Page 8



St. Roman's Catholic School with Combination Sister's House  
Picture Source: *Parish On The Ridge*, Page 9

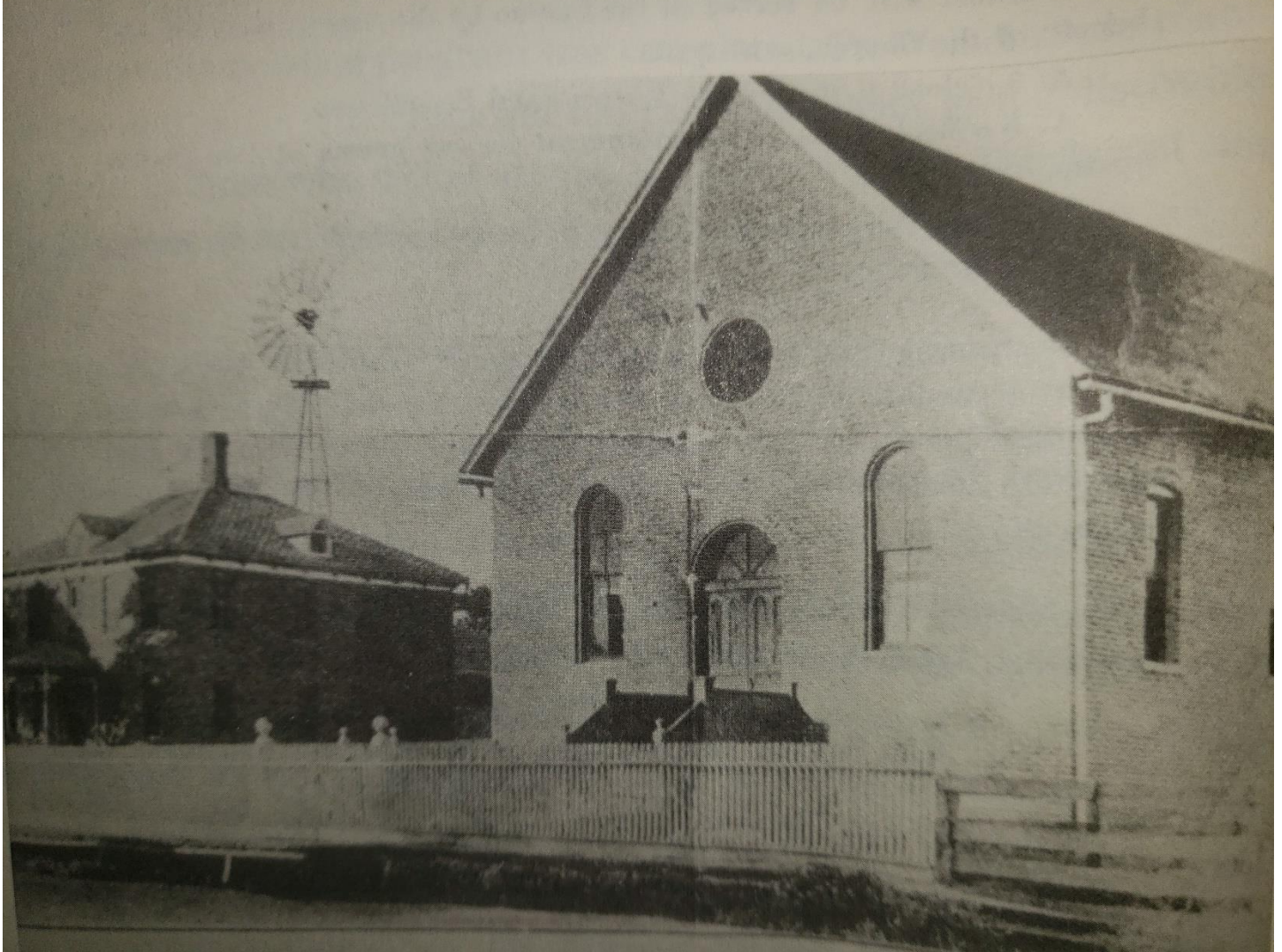


## The Seeds of the One Square Block Are Planted – 1890s

### 1897 - St Roman's Church is Built

In 1897, Father Weibel looked for a new and more central location for the church and the Sisters School. A desirable plot, two acres of ground, within two blocks of the courthouse were found and purchased on May 18, 1897. Two-thirds of the property were bought by the Sisters and the remainder being the property of St. Roman's Congregation.

On June 7, 1897, Mass was read on the new ground and the laying of the cornerstone of St. Roman's Hall, 80 x 30 feet. It was used as a church until 1906 as it was too small for the growing congregation. The following year the rectory, a two-story building 36 x 46 feet was erected.



On Left, 1897 Rectory, on right, 1897 St. Roman's Church.  
West side of buildings, view is from S. Church Street looking southeast.

Picture Source: *Parish On The Ridge*, Page 16

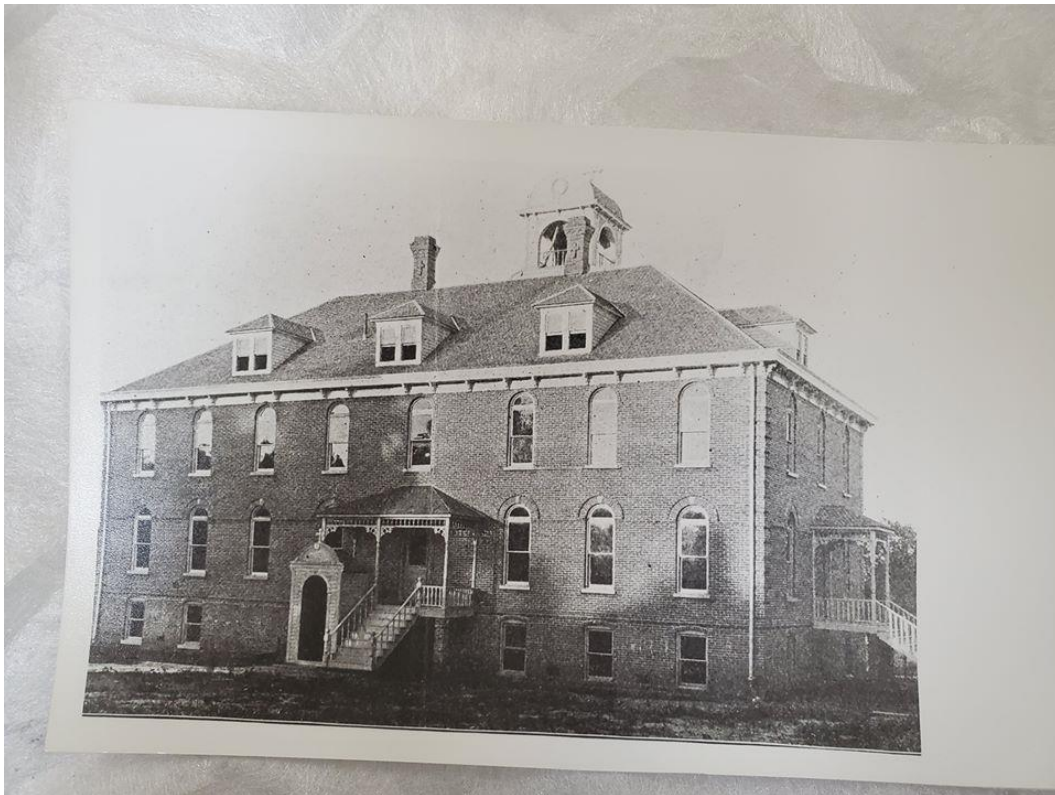
1898 - Holy Angels Convent is Built

Construction of Holy Angels Convent was begun in the autumn of 1897 and was dedicated on July 10, 1898.



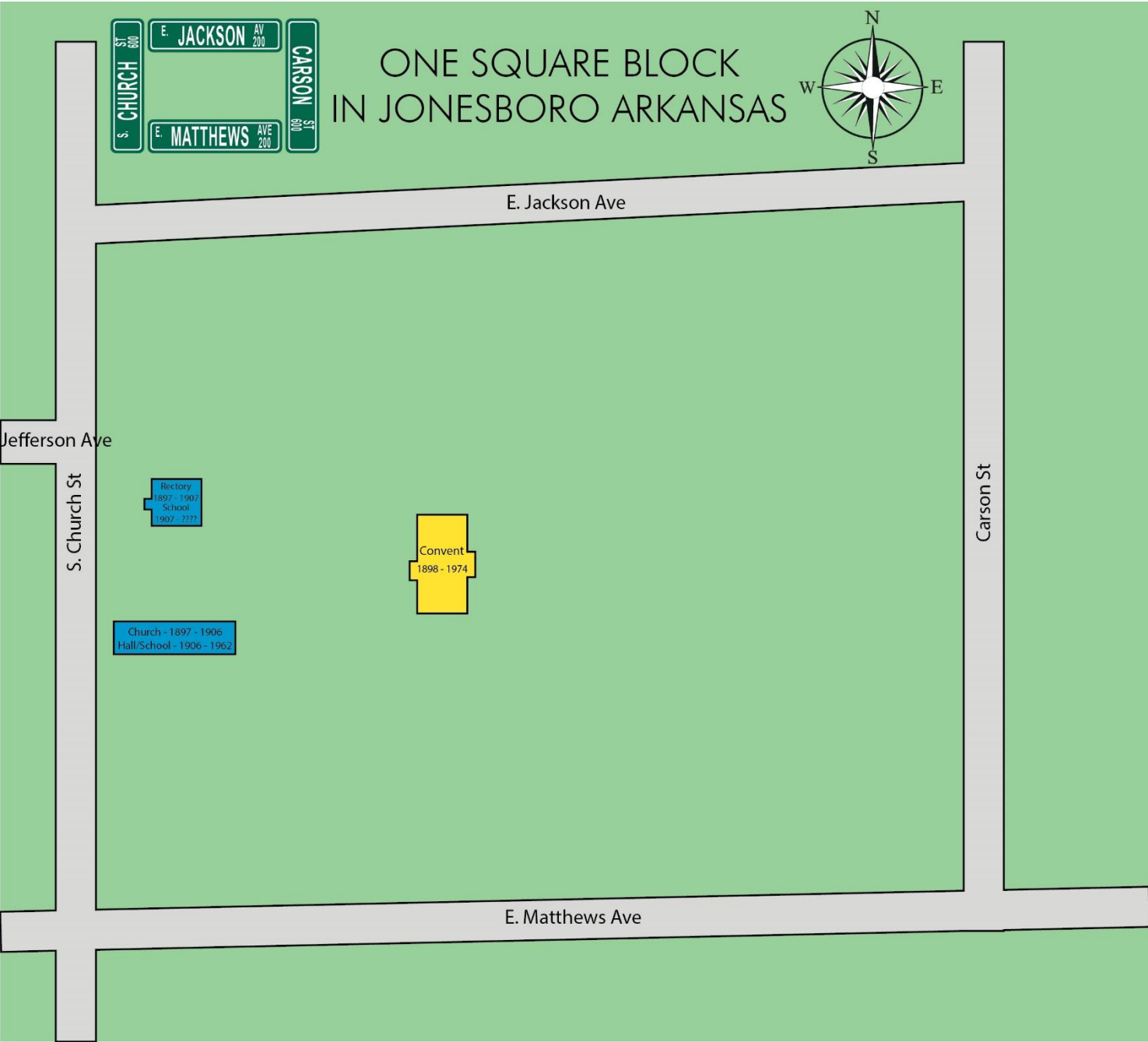
East side of 1898 Convent, view is looking west.

Picture Source: *Jonesboro Enterprise, Special Magazine Edition, Jonesboro Arkansas Illustrated*



West side of 1898 Convent, view is looking east.

Picture Source: Unknown

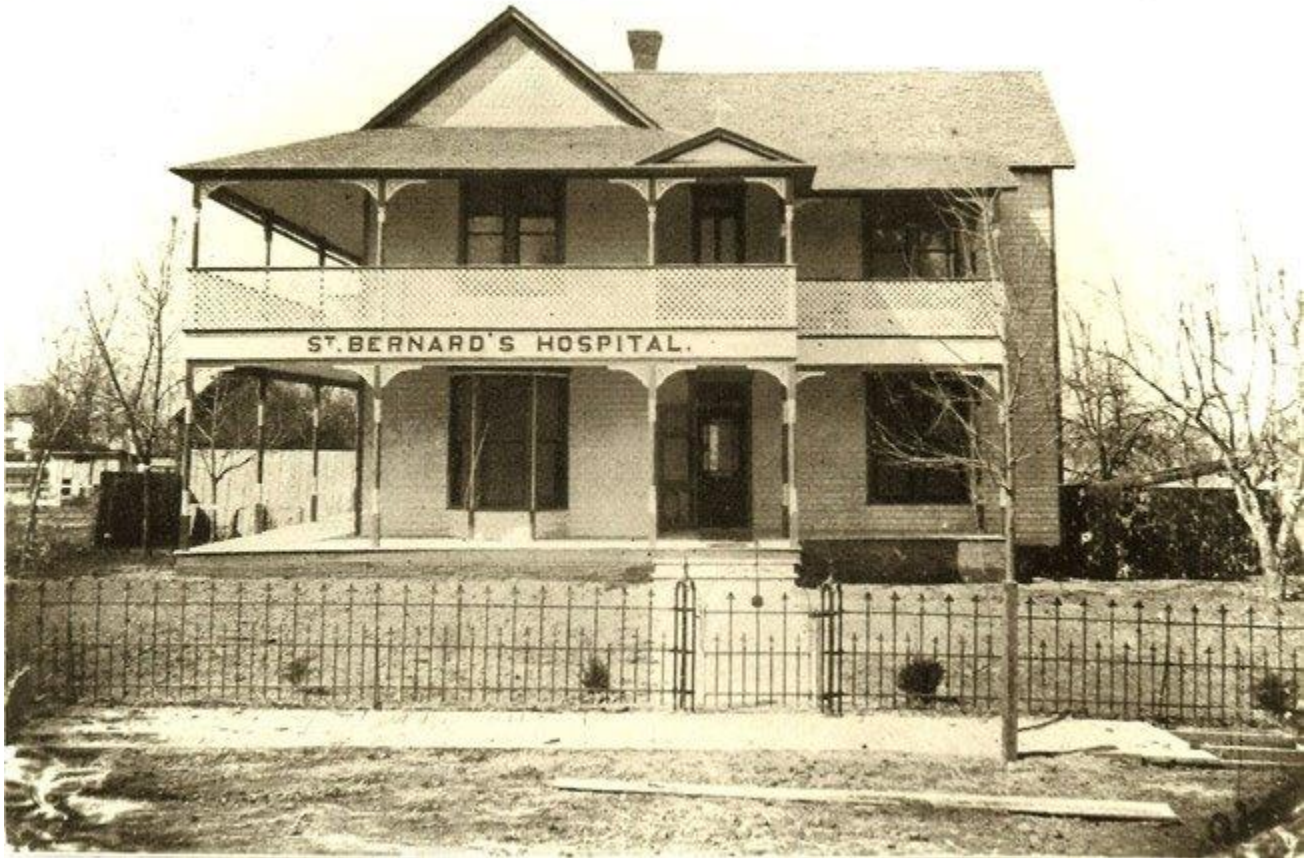


## A Growing Time – 1900's

### 1900 - St Bernard's Hospital is Established.

In the autumn months of 1899 saw a major outbreak of malarial fever in the Jonesboro area, many cases proving fatal. There was not any sort of hospital in Jonesboro at the time and many in area were desperate need. Realizing the need of a hospital for the rapidly developing section of Northeast Arkansas and urged on by enthusiastic and sympathetic friends conceived the plan for the sisters to found a hospital in Jonesboro.

A house adjacent to the Convent owned by Mr. Robinson's was selected and the Sisters purchased it. The house, a six-room frame building, was remodeled to suit the new mission. The hospital was opened on July 5, 1900.



Front of 1900 Hospital building, south side.  
View is from E. Matthews Ave, looking north.  
Picture Source: Unknown

## 1901 - Addition to St. Bernard's Hospital

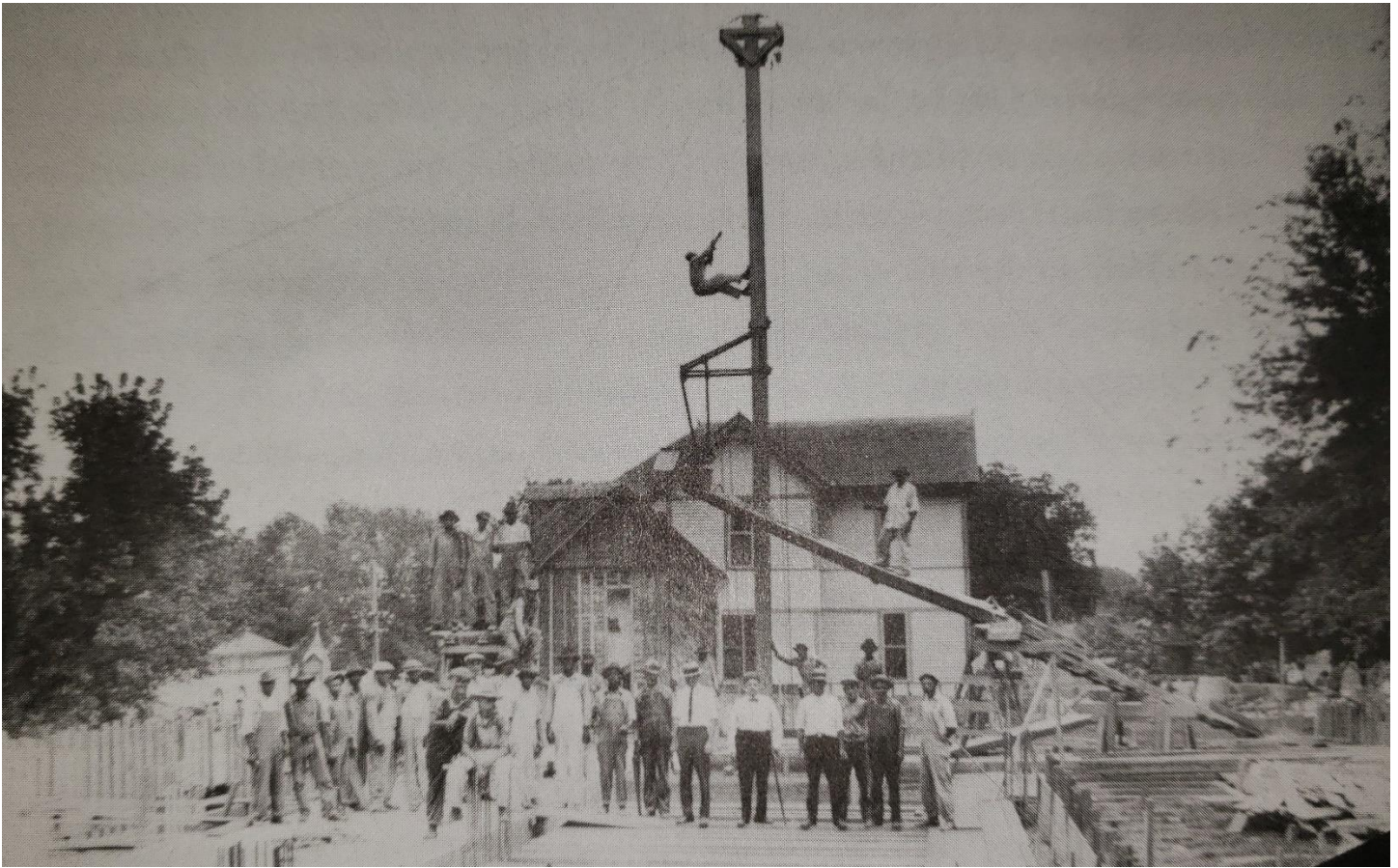
After the hospital opened, it quickly was inadequate to receive all who sought admission to the hospital. In May 1901, the Sisters purchased Mr. Howards residence, east of the 1900 Hospital. The two buildings were connected by a one-story structure, containing two wards, an operating room and a dressing room.



View of 1901 addition, 1900 Hospital building to left and 1898 Convent building to the right.

View is from E. Matthews Ave looking northwest.

Picture Source: *A Century of Serving*, page 5



Moving the second hospital building closer to the 1900 building in 1901. This view would be from the east side of the 1900 building looking east, E. Matthews Ave would be to the right.

Picture Source: *A Century of Serving*, page 6

## 1906 - Addition to St. Bernard's Hospital Opened

The number of patients constantly increased, it became obvious that a larger and more accommodating building was needed. The new hospital, built during 1905, was a spacious two-story 46 x 110-foot building with a basement. It was opened to the public on January 1, 1906. The building was modern for the time. It included 40 well-ventilated rooms, spacious corridors, steam heat, electric lighting, electric bells, bath rooms, fire apparatus with hose attachments on every corridor. For surgical cases, it included a first-class operating room, well equipped operating, dressing and sterilizing room equipped with all the necessary aseptic apparatus and instruments. This building was located behind (north) the 1900 building.



1906 Hospital Building Addition, West Side.

The view is looking Southeast, E. Matthews Ave would be couple hundred feet past the end of this building.

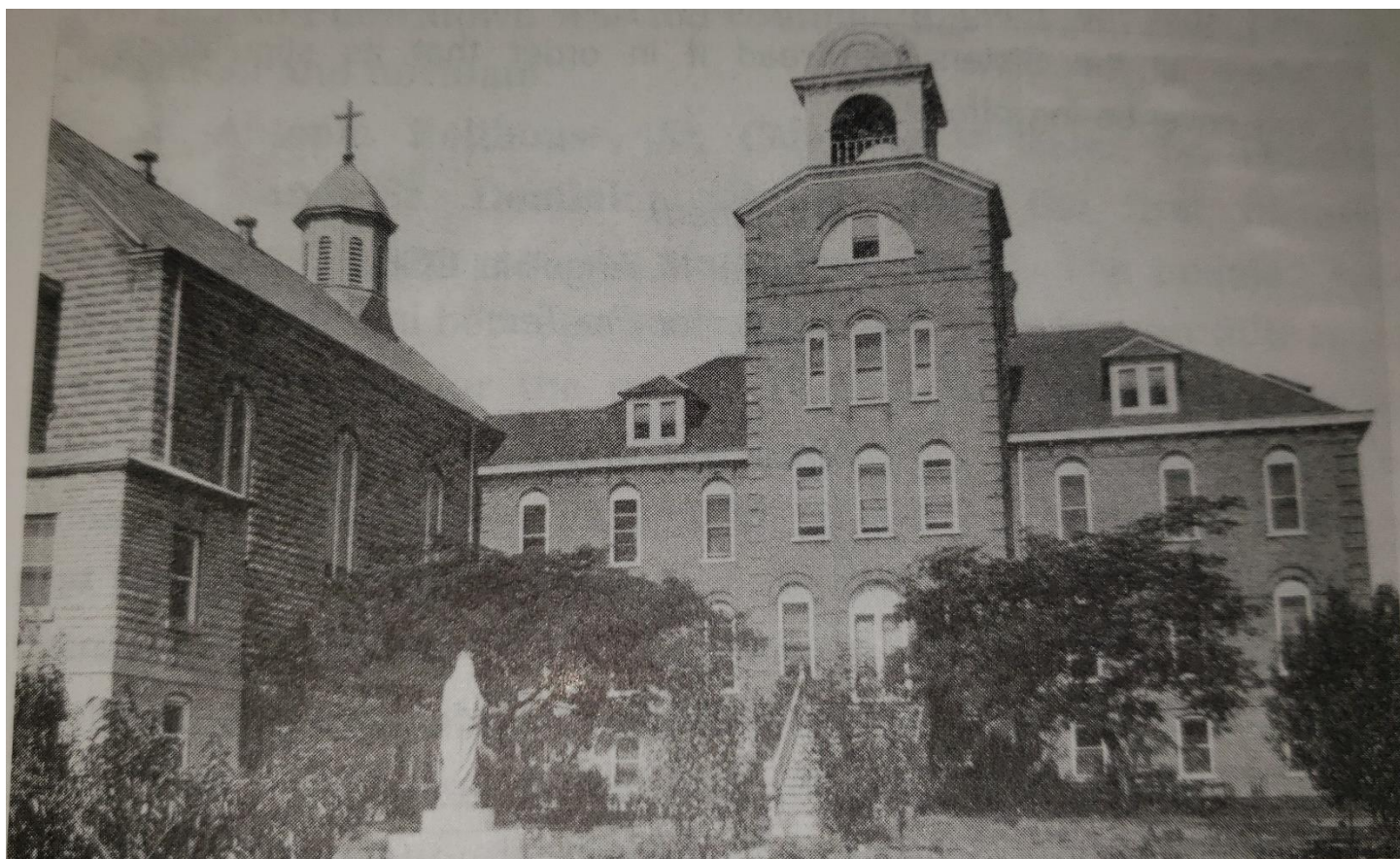
Picture Source: *On High Ground*, page 85

### 1906 – Holy Angels Convent Chapel is Built

Simultaneously built with the hospital addition, the convent chapel was built. It was a 40 x 65-foot, solid brick with a cement-block veneer. The first service was celebrated on March 19, 1906 and the chapel was dedicated on May 22, 1907.

Due to growing congregation at St. Roman's church, their building was no longer large enough so the church moved its services to the Convent Chapel and paid rent until they erected their own church in 1933.

The Convent Chapel was located between the 1898 Convent Building and the 1906 Addition to the hospital



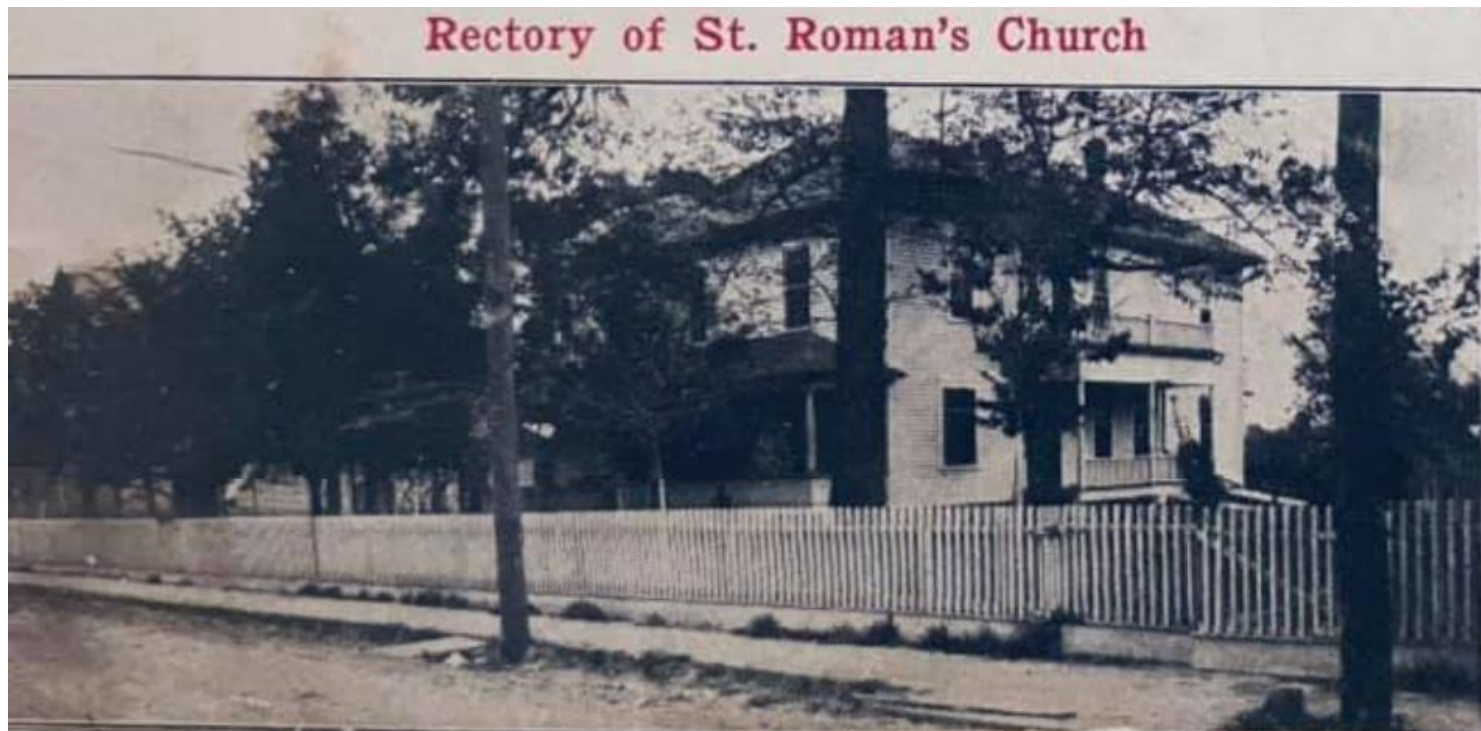
1906 Convent Chapel is on the left, viewing the north side of Chapel, building on right is the east side of the 1898 Convent. The view is looking west

Picture Source: *On High Ground*, page 86

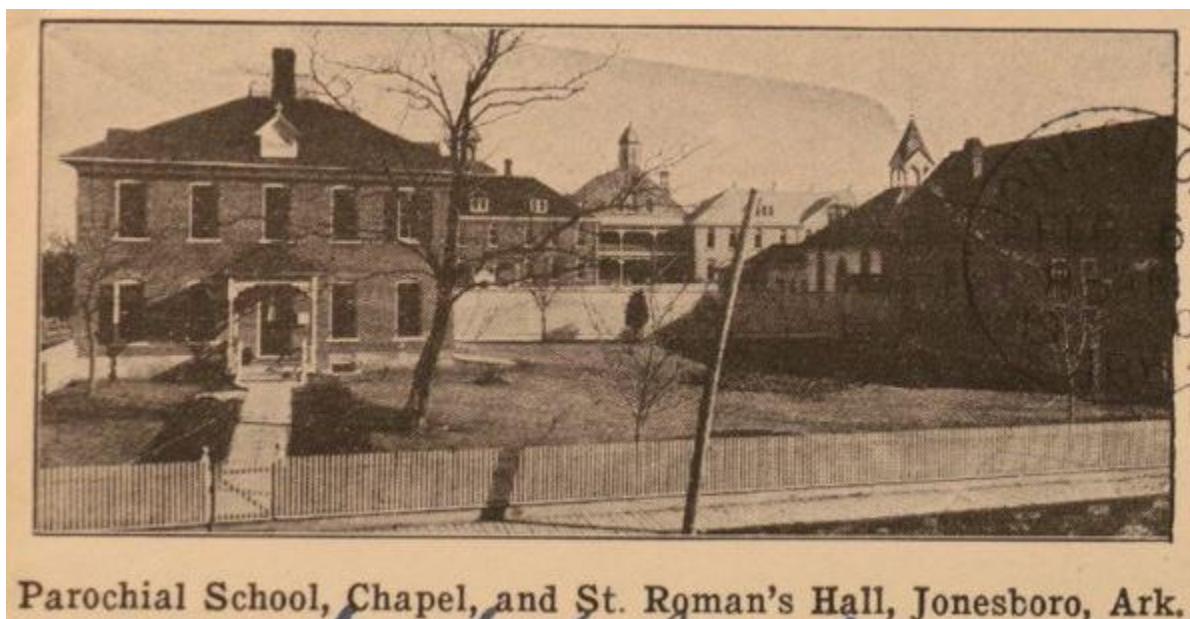


## 1907 - New Church Rectory Selected, Existing Rectory Converted for St. Roman's School

By 1907, the school had grown so much that more room was needed. The parish made the decision to purchase adjoining property and house from a Mr. Townley. This house would serve as the rectory and the existing rectory would be renovated to be used for the school.

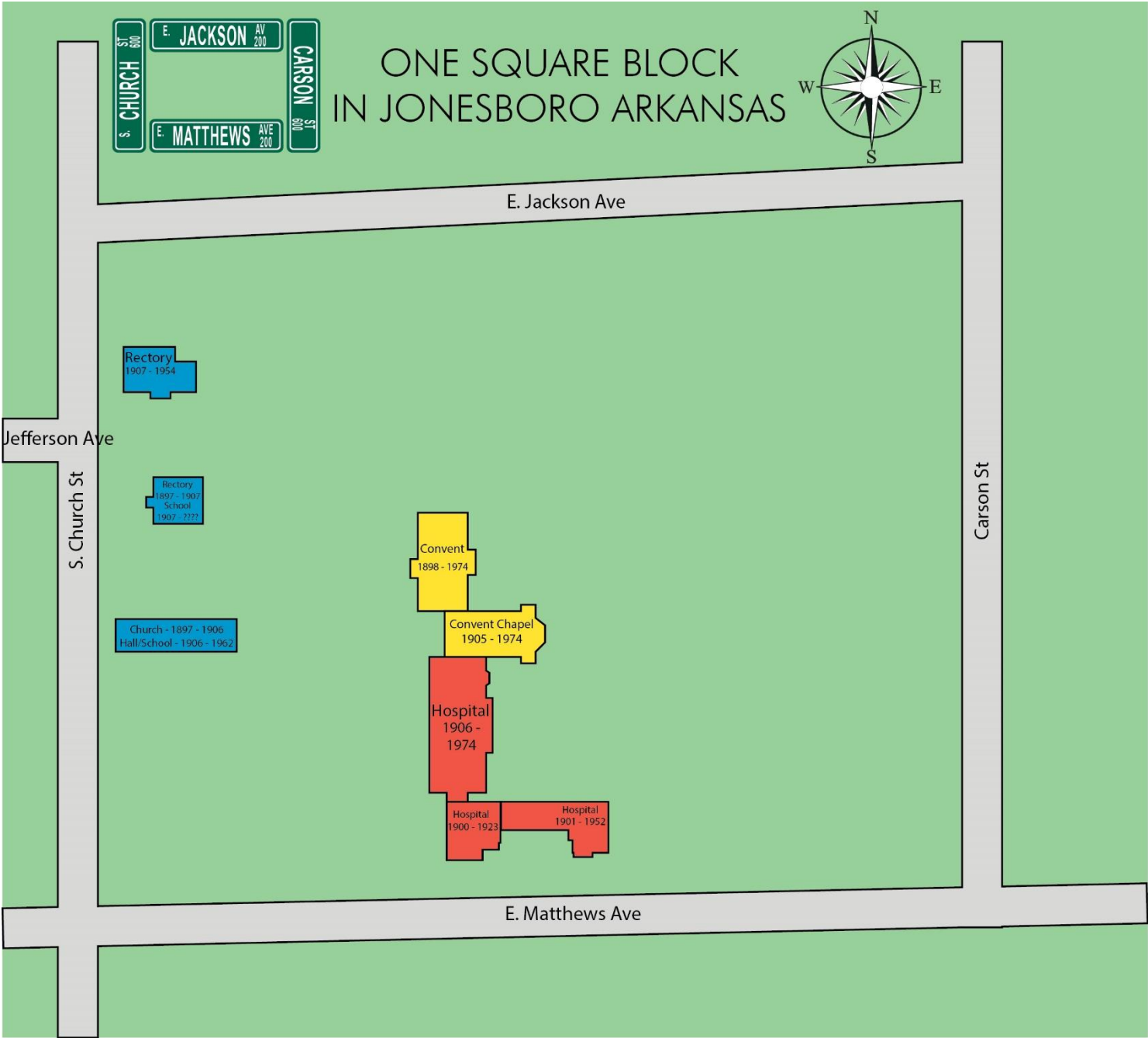


1907 Rectory, West and South Side  
View is from Church St, looking North East  
Source: Post Card



From Left to right, Old Rectory, built 1897, converted to a school 1907, 1898 Convent, 1906 Chapel, 1906 Hospital Addition, *unknown building*, 1897 Hall (used as the church until 1906 when the convent chapel was completed). View is from S. Church Street looking east.

Picture Source: Envelope



## New Buildings for School, Convent and Hospital – 1920's

### 1920 – Fire at House North of the Rectory

On April 10<sup>th</sup>, the two-story boarding home located north of the Rectory burned to the ground. It was located on the southeast corner of S. Church St and E. Jackson Ave. It did cause a little damage to the rectory, but the rectory was promptly repaired. This lot was purchased in 1923 by the church.

### 1922 – New St. Romans School Building

In 1920, the school was facing a problem of not enough space and being spread out between three buildings. It was decided to build a new school with the money the parish had been saving up for a new church. The church also sold the four lots it still owned on Cate Ave to help toward the new school. After inspection of the 1897 parish hall, it was determined that if they added on a new building wing to the north and renovated the hall, it could be made into a substantial school building.

Each room would have a blackboard, cloakroom and large windows. It would be centrally heated with restrooms in the basement for boys and girls.

In January 1922, the building was completed and they starting using it at the beginning of the second semester in February.



St. Roman's School, north side.

View is looking south, the old church/hall is connected on the back.

S. Church St would be to the right (west) of this building.

Picture Source: *Parish On The Ridge*, Page 33

### 1923 – New St. Bernard’s Hospital Building

The cornerstone for the new building was laid on October 8, 1922 and the “new Annex” was dedicated and opened on April 15, 1923. The new building replaced all except one of the old frame buildings, 1901 addition. This building is fireproof and has three stories and a basement. It contained 76 rooms, five operating rooms, sterilizing and preparation rooms complete with all modern equipment. It also contained a well-equipped obstetrical department, meeting and lecture rooms for the doctors, elevator and telephone system.



St. Bernard's Hospital 1923 Addition, south side of the building facing E. Matthews Ave.  
1901 Building is on the right.

The view is looking north, with E. Matthews Ave at bottom of picture.

Picture Source: *A Century of Serving*, page 25

### 1923 – St. Roman’s School Basement Addition

In the fall of 1923, the PTA raised funds for to put a basement under the new school.

### 1924 – Addition to the Parish Hall

In the summer of 1924, an addition was built to the parish hall and the building remodeled so that it was more spacious. The abandoned basement of the hall was renovated at this time.

## 1928 – Church Rectory Moved and Renovated

The rectory was replastered and redecorated, new coat of paint on the outside, both upstairs and downstairs floors and woodwork sanded, varnished and painted. This renovation was made necessary since the house was moved 100 feet north of its former location, making a place for the church when the funds are available.



St. Roman's Church Rectory, southeast corner of S. Church St and E. Jackson Ave.

This view is looking east from Church St, Jackson Ave is left of this building.

Picture Source: *The Guardian*, January 3, 1941, Page 7

## 1929 – New Holy Angels Convent Building

By late 1927, it was time to build the needed addition to the Convent. To save costs, the new Annex was to be added to the 1898 Convent building. The building would serve both as a Convent and as the future Holy Angels Academy. Ground was broken for the construction on August 28, 1928. The cornerstone was laid on October 30, 1928. The final design of the building provided an entity of the four stories as a counterpart to the 1923 addition to St. Bernard's Hospital. Both were constructed of dark red brick, fire-proof with unique facades.

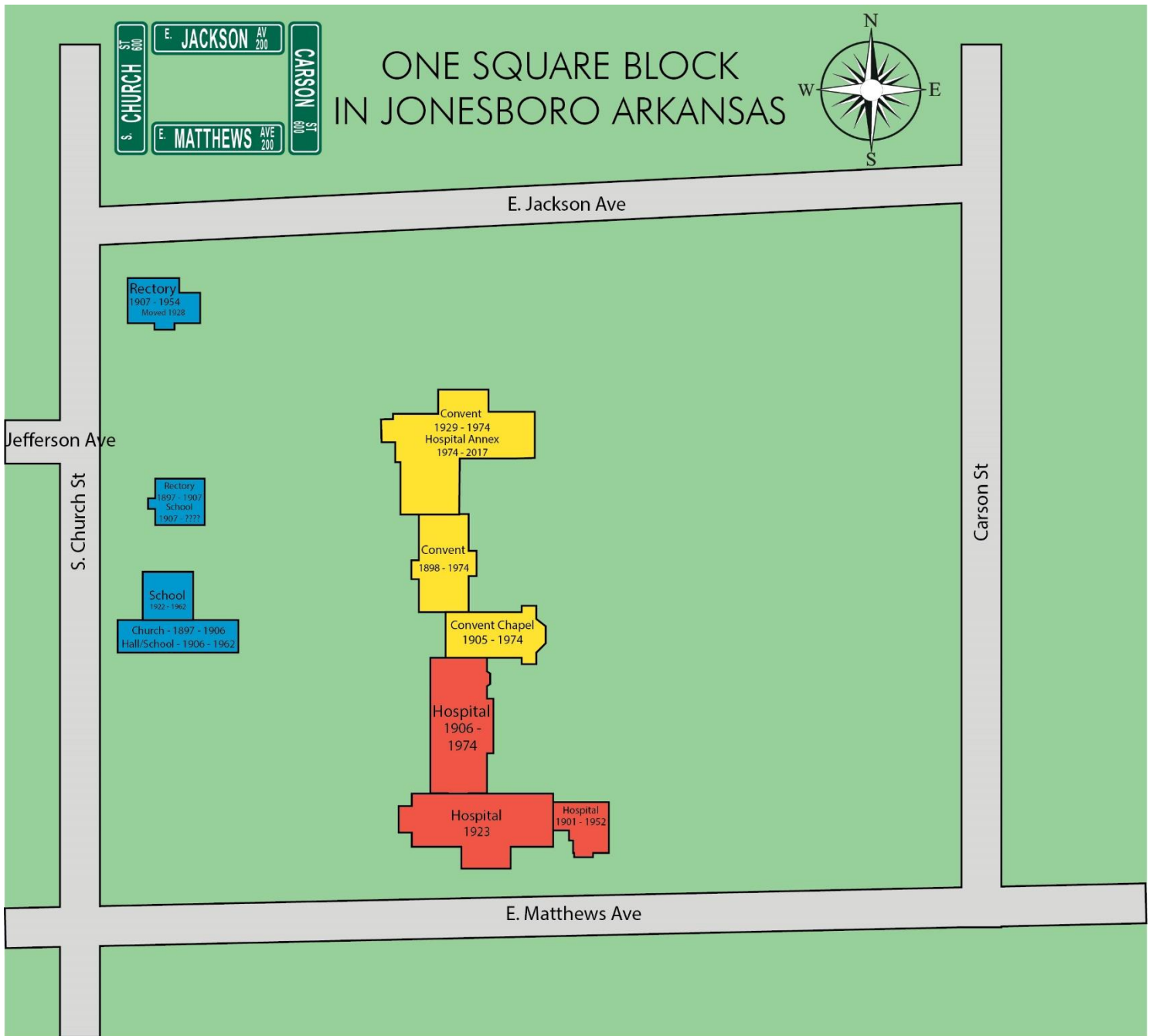
The statue above the Convent entrance was one of the Blessed Virgin Mary by Kaletta. The two upper stories were to serve the Sisters, while the lower two stores were designated for the boarding and day students of Holy Angels Academy. Hot and cold water, central heating, electric lighting was provided throughout the building.

The building was dedicated on April 16, 1929.



1929 Convent Building, north side of building facing E. Jackson Ave. 1898 Convent building is behind this building. View is south from E. Jackson Ave.

Picture Source: Post Card



## A New Name for the Parish – 1930's

### 1933 – Blessed Sacrament Church is built

In 1928, the parish had raised nearly \$30,000 toward a new church and they contacted an architect to find out a total cost for construction. The architect gave four estimates, one using granite masonry at \$54,176, one using Batesville stone at \$51,609, one using local stone masonry at \$50,703 and the final one using red brick at \$51,023. The decision was to move forward with the red brick.

In 1930, more than \$30,000 had been raised.

In 1932, the Diocesan Building Committee approved the beginning of construction. The committee felt that the church would be able to finance the amount that would need to be borrowed, about \$20,000. In late 1932, construction started on the new church.

The church was built of brick and stone in a primitive Romanesque style, adapted to modern requirements. The façade of the church had two towers, one containing the belfry and the other a pipe organ. The window frames were made out of cut stone and the art glass is secured. Gutters, downspouts and all other sheet metal work were made of copper. There was practically no exposed woodwork on the exterior of the building when built. The exterior was built nearly all brick, stone or copper.

In a letter from Bishop Morris, dated September 12, 1933, he agreed to the name change from St. Roman's to Blessed Sacrament.

The church was dedicated on October 17, 1933.



Blessed Sacrament Church, front side (west side) facing S. Church St and south side to the right. The church rectory is to the left, north of church. The view is from S. Church St facing northeast.

Picture Source: Post Card



## 1935 – Fire Strikes

On February 4, 1935, the parish hall was destroyed by fire, no other buildings were damaged. According to a letter sent by Father Kordsmeier to the Bishop, the building was built about 1892. It was a brick veneer building and was getting unsafe for use. Due to the fire, a new parish hall was needed.

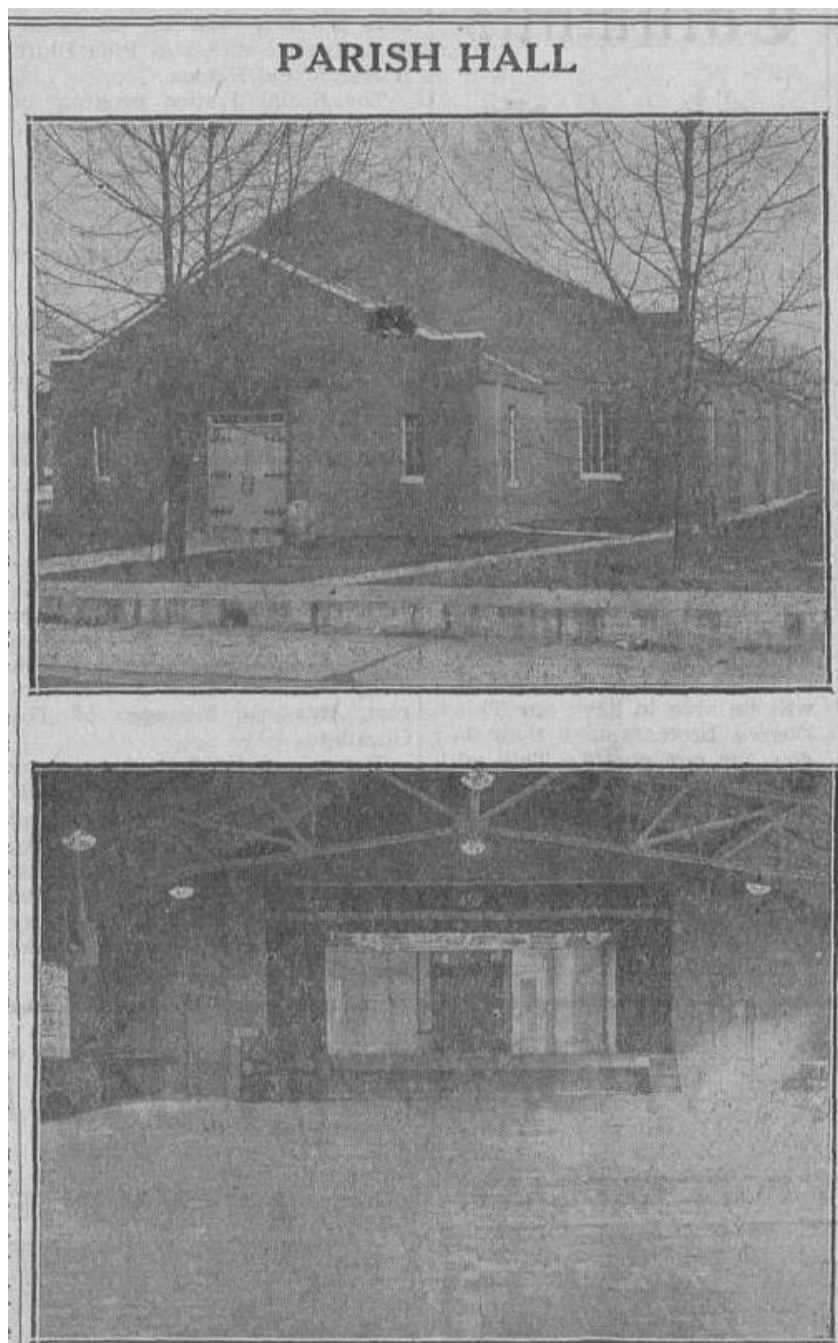
*I have no information on this building, it must have been there when the church moved to this location if it was built around 1892.*

## 1938 – Blessed Sacrament Parish Hall is built

In 1936, an announcement of a new parish hall would be erected within the next year on two additional lots south of the school building.

In 1937, the St. Francis River overflowed its banks and flooded a lot of northeast Arkansas. Flood victims were brought to Jonesboro. This disaster delayed the start of construction.

In 1938, the parish hall was completed. The building was a one-story 100 x 80 feet brick building, consisting of an auditorium, stage and full-sized kitchen costing \$54,000. The building had a seating capacity of 600. The building was designed for a second floor, but it was never added. The building was blessed and available for use on October 2, 1938.



Top: Front (West side) of Parish Hall. The view is from S. Church St facing east.  
Bottom: Inside the parish hall facing the stage, to the left was the original kitchen.

Picture Source: *The Guardian*, March 3, 1939, Page 6

### 1938 – Holy Angels Convent Chapel Addition

With the upcoming 50 year anniversary of the Sisters serving in Jonesboro, it was decided to renovate and add a new entrance to the Convent Chapel. New clear windowpanes were installed in the side windows in lieu of stained glass. The plan was to replace them with stained glass whenever finances allowed the expense. A Wick pipe organ and oak pews were installed.

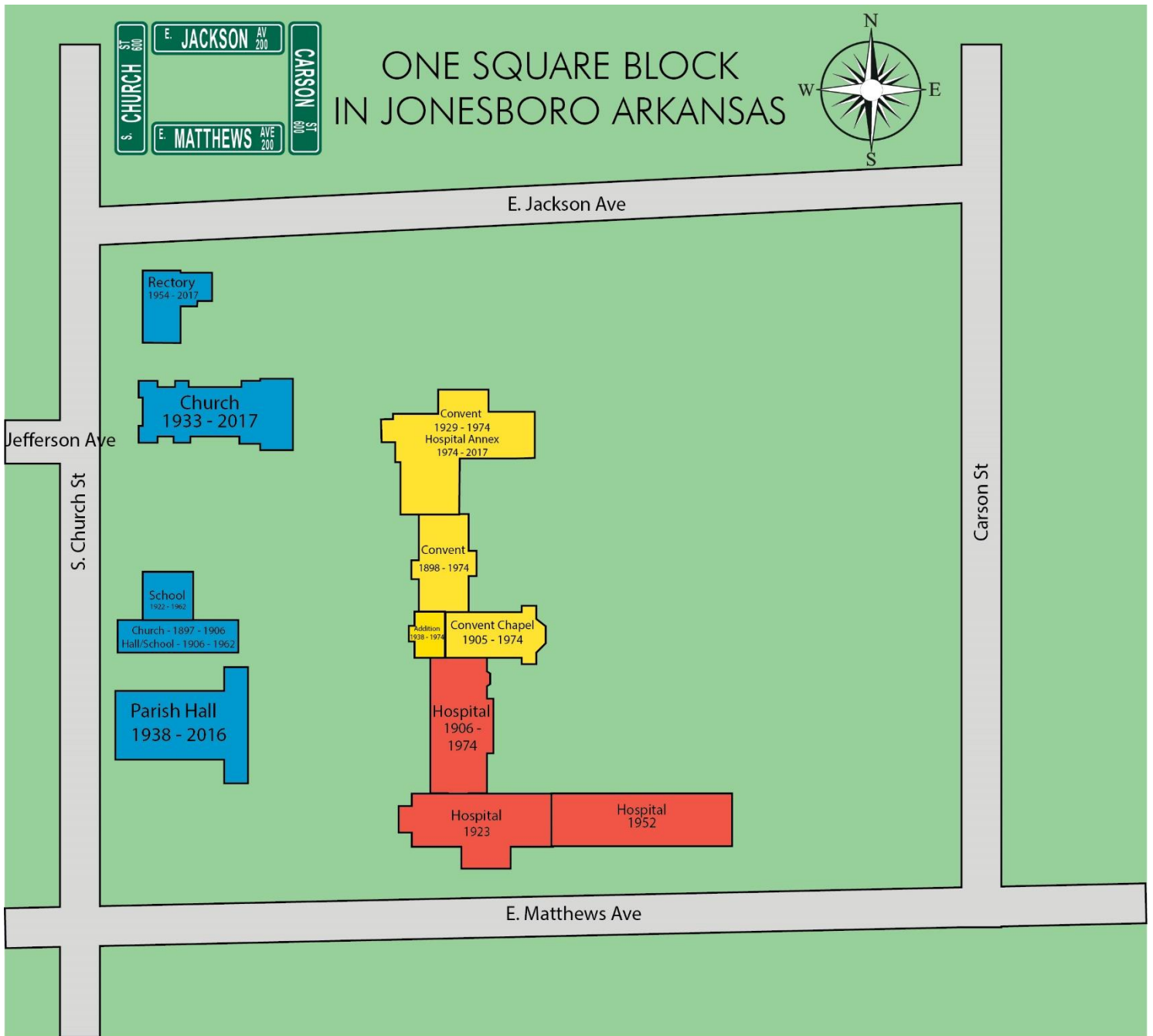
On October 3, 1938, the renovated Chapel was blessed by Bishop Morris.



New Convent Chapel entrance, was built on the west side of the existing 1906 Chapel, to the left (north) is the 1898 Convent building and to the right (south) is the 1906 St. Bernard's Hospital addition.

The view is east from near the back side of the Parish Hall.

Picture Source: The Guardian, October 7, 1938, Page 6

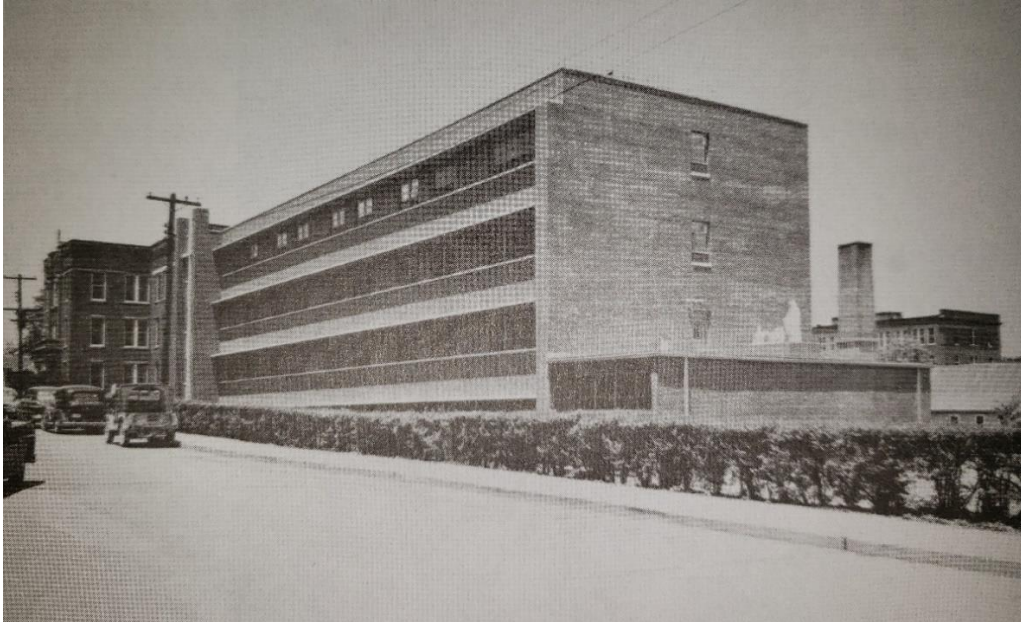


## Making Progress - 1950's

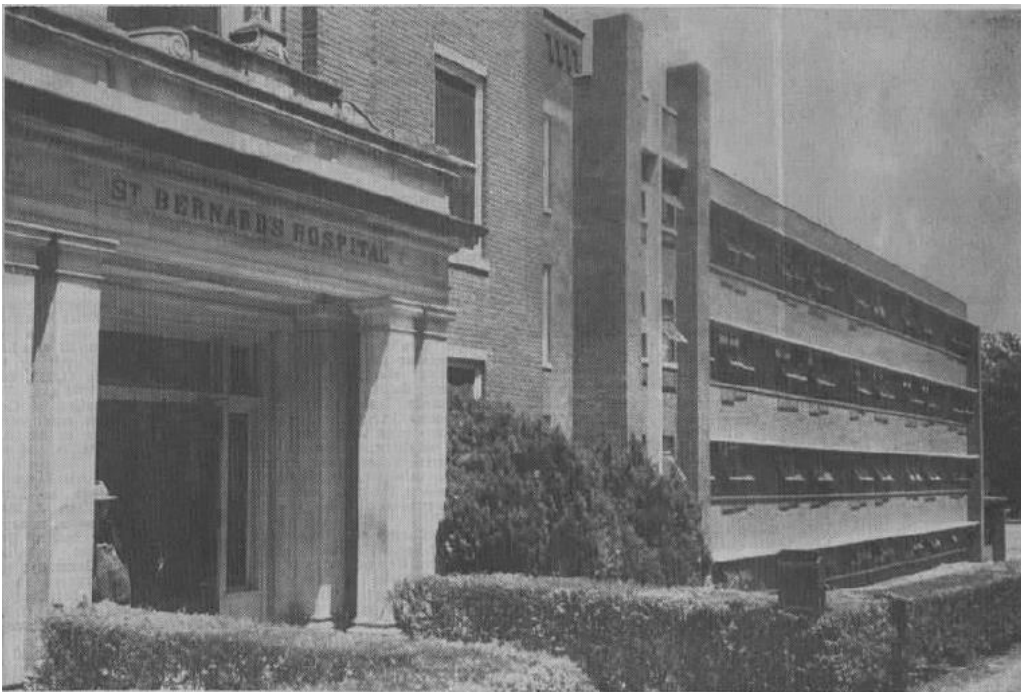
### 1952 – St. Bernard's Hospital Addition

July 5, 1950, Ground is broken for a new \$600,000 addition to St. Bernard's Hospital that will provide 60 additional beds.

July 11, 1952 the new wing was dedicated. The four-story wing is 160 foot long made of red brick and increased the bed capacity to 150. It was added on the east side of the 1923 building.



St. Bernard's Hospital 1952 Addition, south side facing E. Matthews.  
View is from E. Matthews Ave looking northwest.  
Picture Source: *A Century of Serving*, page 55



Left, 1923 St. Bernard's Hospital entrance, right, 1952 Addition, south side facing E. Matthews.  
View is from E. Matthews Ave looking northeast.  
Picture Source: *The Guardian*, July 11, 1952, Page 1

## 1954 - New Church Rectory

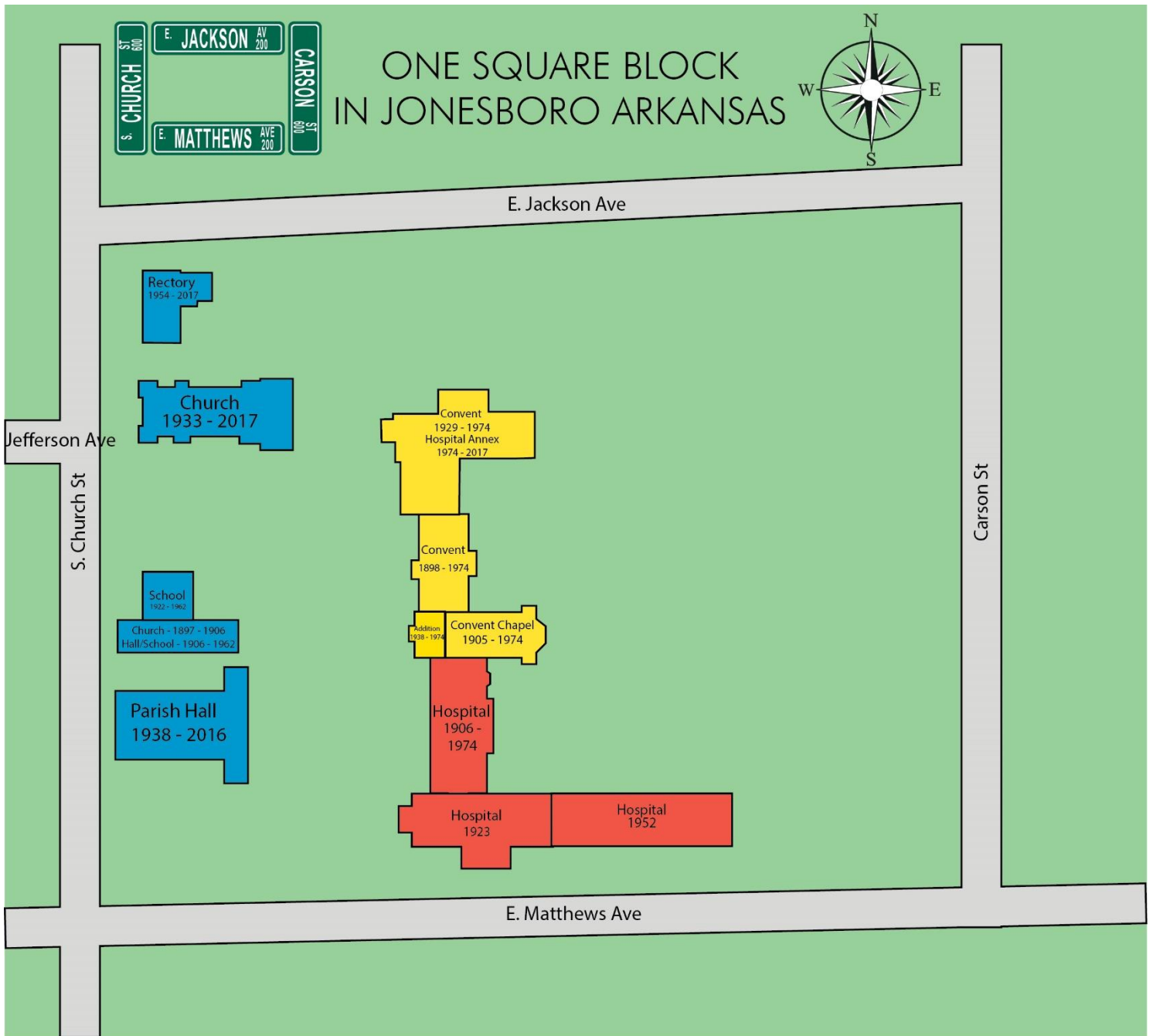
The parish rectory had been deteriorating for some years, it was decided it was time to replace it. In 1952, plans were drawn up by architect Elmer Stuck. The rectory was to be a two-story brick building at an estimated cost of \$65,000. The parish had approximately \$35,000 on hand so the parish would have to borrow money to build it. The plans were approved and in June 1953, Bishop Fletcher gave the go ahead to borrow \$30,00 to fund the erection of the new rectory.

Construction started in November 1953 and was constructed on the same site as the previous rectory, the southeast corner of S. Church St and E. Jackson Ave. The building was completed in the fall of 1954 at a cost of \$55,000.



Blessed Sacrament Rectory, west side facing S. Church St  
View is looking east from S. Church St  
Picture Source: *Google Street View*







## St Bernard's Grows – 1960's

### 1962 - Hospital Expansion

The expansion was to the north of existing building and was four stories tall and a basement. It increased the bed capacity from 155 to 191. I included an increase in the size of the laboratories, added a radiology department and a new pediatrics section.

A new two-story laundry building was also part of this project. This building was separate from any existing structures and connected to the basement of the new wing by a tunnel under the access road to the doctor's parking lot and kitchen service.

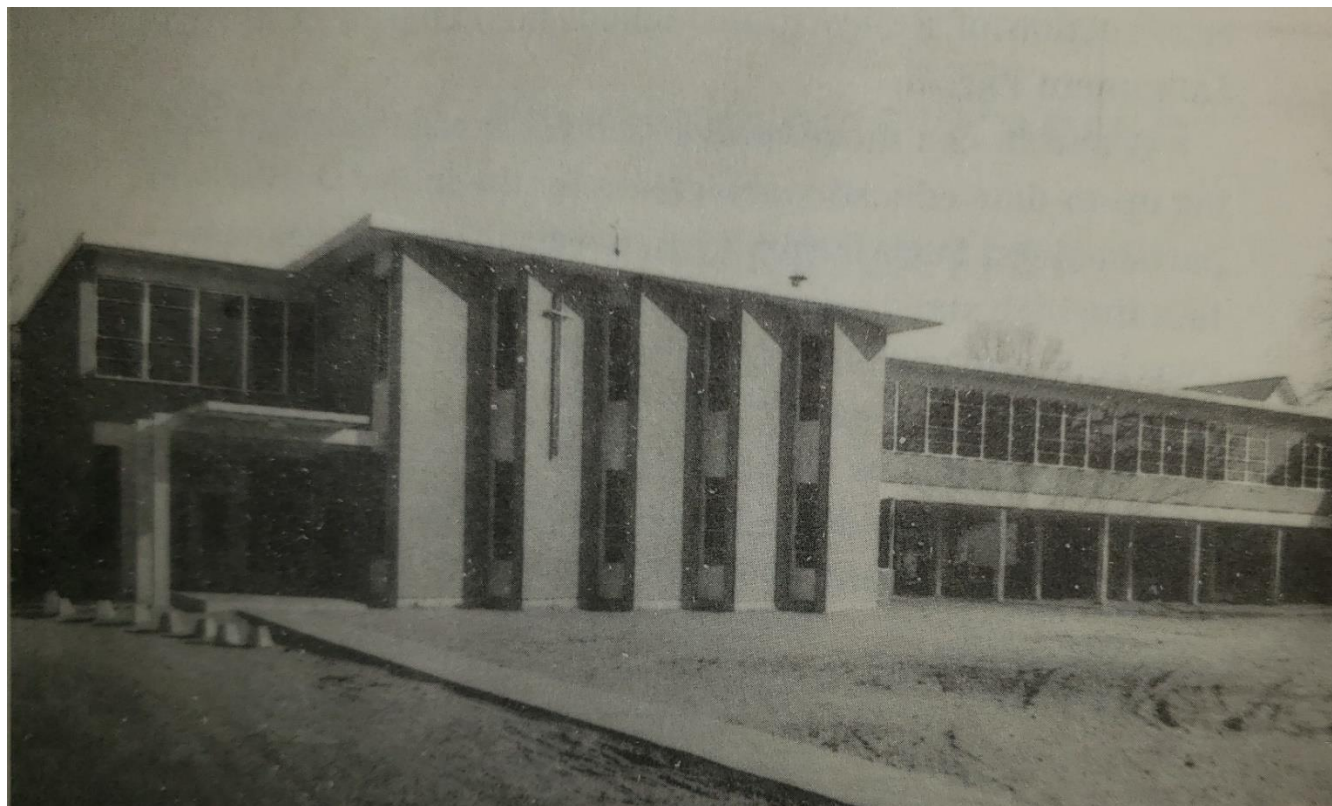
In addition, the administrative office at the Matthews Ave street entrance to the hospital was enlarged as well as the waiting room and lobby.



St. Bernard's Hospital, front, facing south.  
View is from E. Matthews Ave looing north.  
Picture Source: Post Card

### 1962 - New Blessed Sacrament School Building

A new school building was built to replace the outdated and overcrowded school. The new school will provide six classrooms, teachers' lounge, office and library. There were four classrooms on the top floor, two on the bottom floor. A covered play area under the second floor was designed that it could be enclosed later for two additional classrooms. The building was 12,000 square feet of floor space within a steel frame and masonry walls.



Blessed Sacrament School, front of building, west side, facing S. Church St.

View is looking east from the south side of the church.

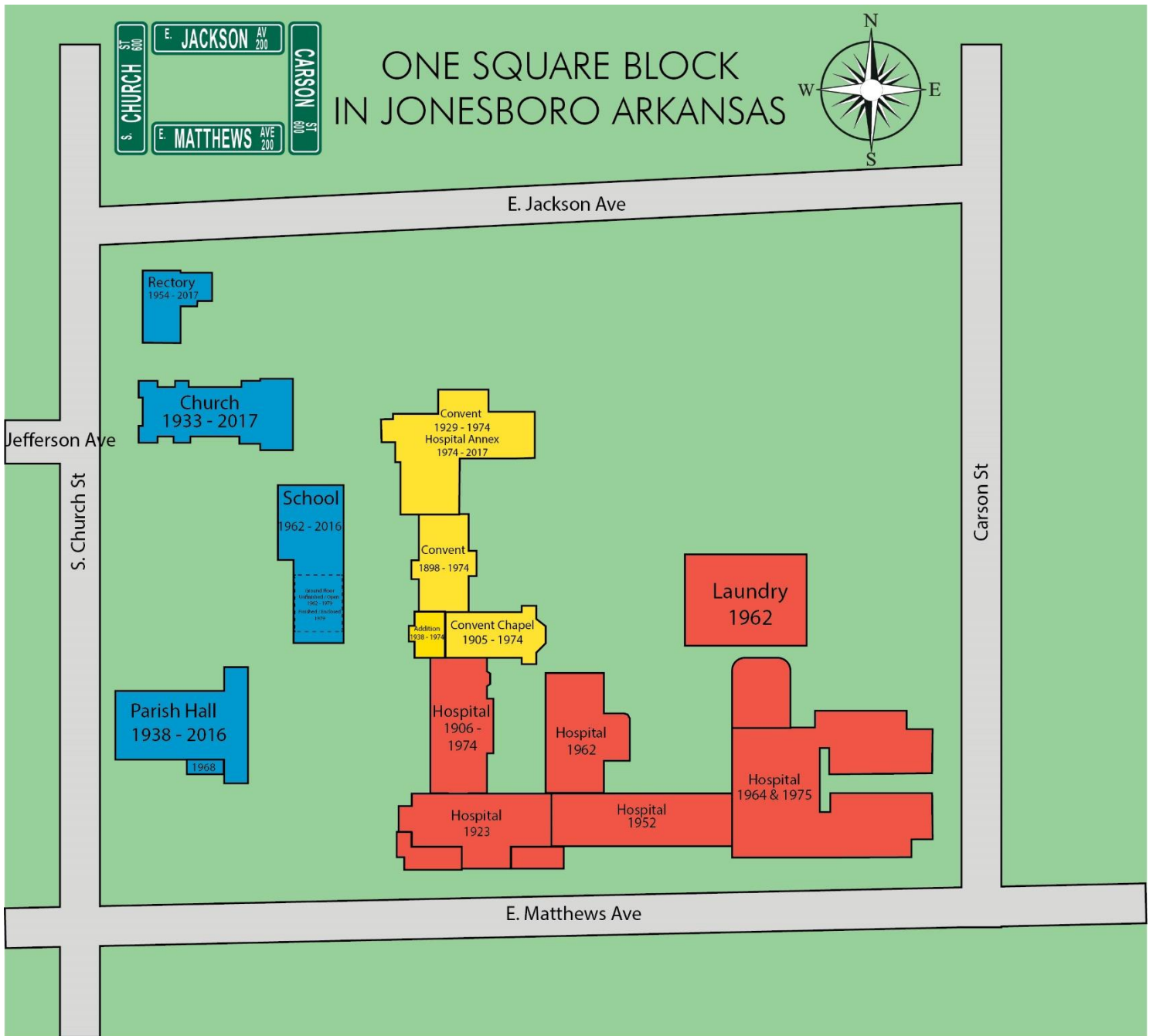
Picture Source: *Parish On The Ridge*, Page 98

### 1964 - Hospital Expansion

A new three-floor expansion of the East Wing was completed increasing bed capacity to 252. A new cafeteria and surgical suite were also included in this expansion.

### 1968 - Parish Hall Remodeling and Expansion

A kitchen addition was made to the parish hall as well as remodeling the parish hall.



## Holy Angels Convent Moves Out of the One Square Block – 1970s

### 1974 - Holy Angels Convent Relocates North of Jonesboro

In 1971, the Sisters accepted a donation of 160 acres north of Jonesboro on, then, TV 8 Road, now County Road 766. The decision was to build a new convent and relocate. The original convent building built in 1898 was obsolete and there was a great need of space for St. Bernard's Hospital. Ground was broken on 7/11/1972 and they dedicated the new convent on October 12, 1974.

### 1975 - St Bernard's East Wing Addition

This project included an addition atop the existing east wing.



St. Bernard's Hospital, East Wing, facing south.

The view is looking northwest, from the intersection of E. Matthews Ave and Carson St.

Picture source, *A Century of Serving*, page 125

### 1975 - St. Bernard's Annex Building

St. Bernard's renovated the 1929 Convent building and made it the Hospital Annex.

### 1976 - St. Bernard's Northwest Addition

The 1906 St. Bernard's Building, 1906 Convent Chapel and 1898 Convent building were torn down to make room on the northwest side of the hospital to add a new emergency room, out-patient laboratory and other areas.

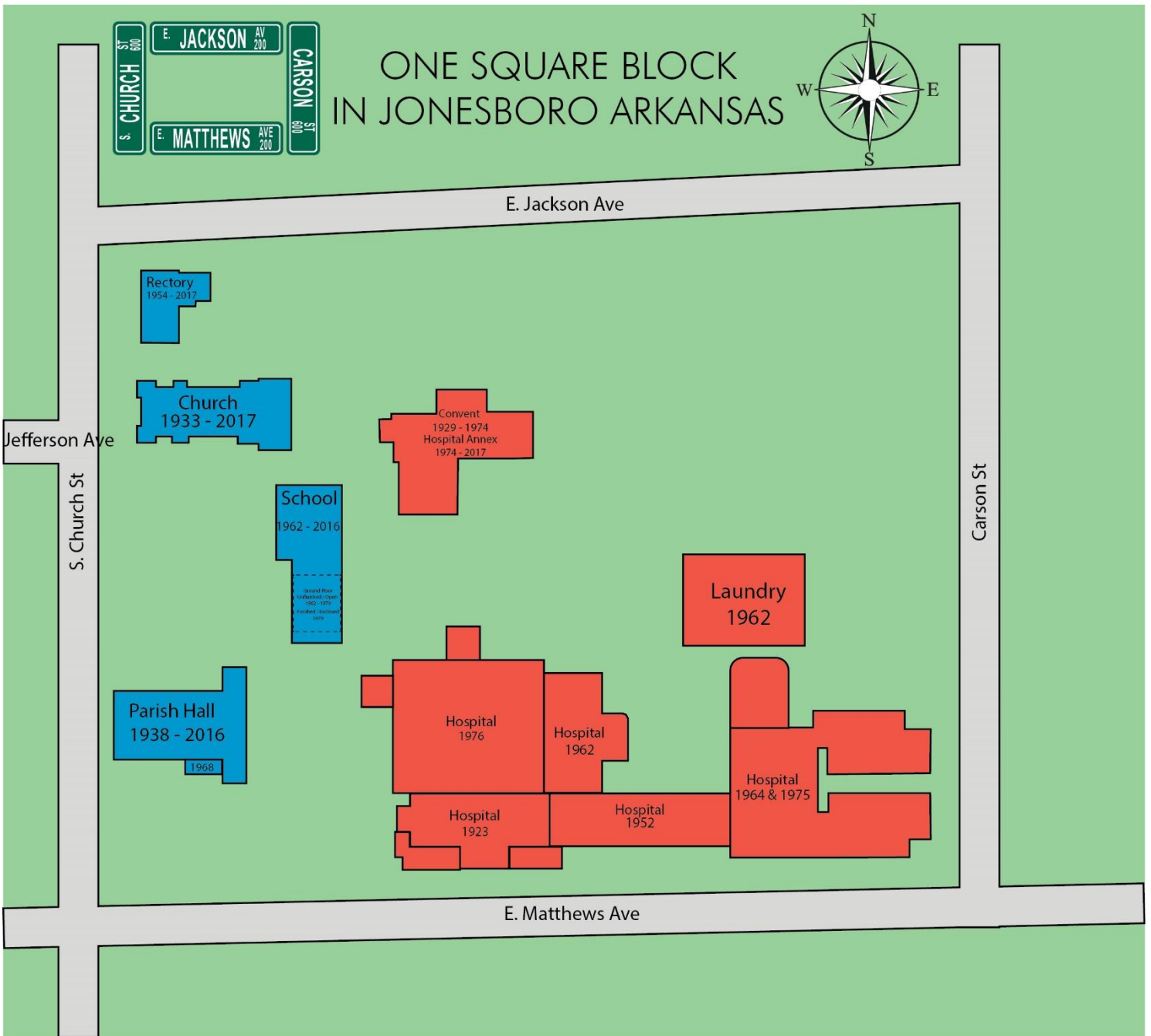


#### 1979 - Blessed Sacrament School – Enclosure of Bottom Floor

When the school was built in 1962, part of the first floor was left unfinished/open. More room was needed at the school to add a kindergarten program so the bottom floor was enclosed and finished to look like the rest of the school.

#### 1979 - Blessed Sacrament Church Purchases Gas Station Property

The gas station at the northwest corner of E. Matthews Ave and S. Church St became available in May 1979. The church was needing additional space so the church purchased the lot for possible future development. The church eventually sold the lot to St. Bernard's Hospital which tore down the gas station and added onto their existing parking lot on E. Matthews Ave.



## Keeping The Pace - 1980s

### 1983 - St. Bernard's North Wing Addition

Announced in late 1981, an addition would be made to the north end of the hospital increasing the bed capacity to 325. The north end would also connect to the Annex building, former 1929 Convent building, which would be renovated as well.



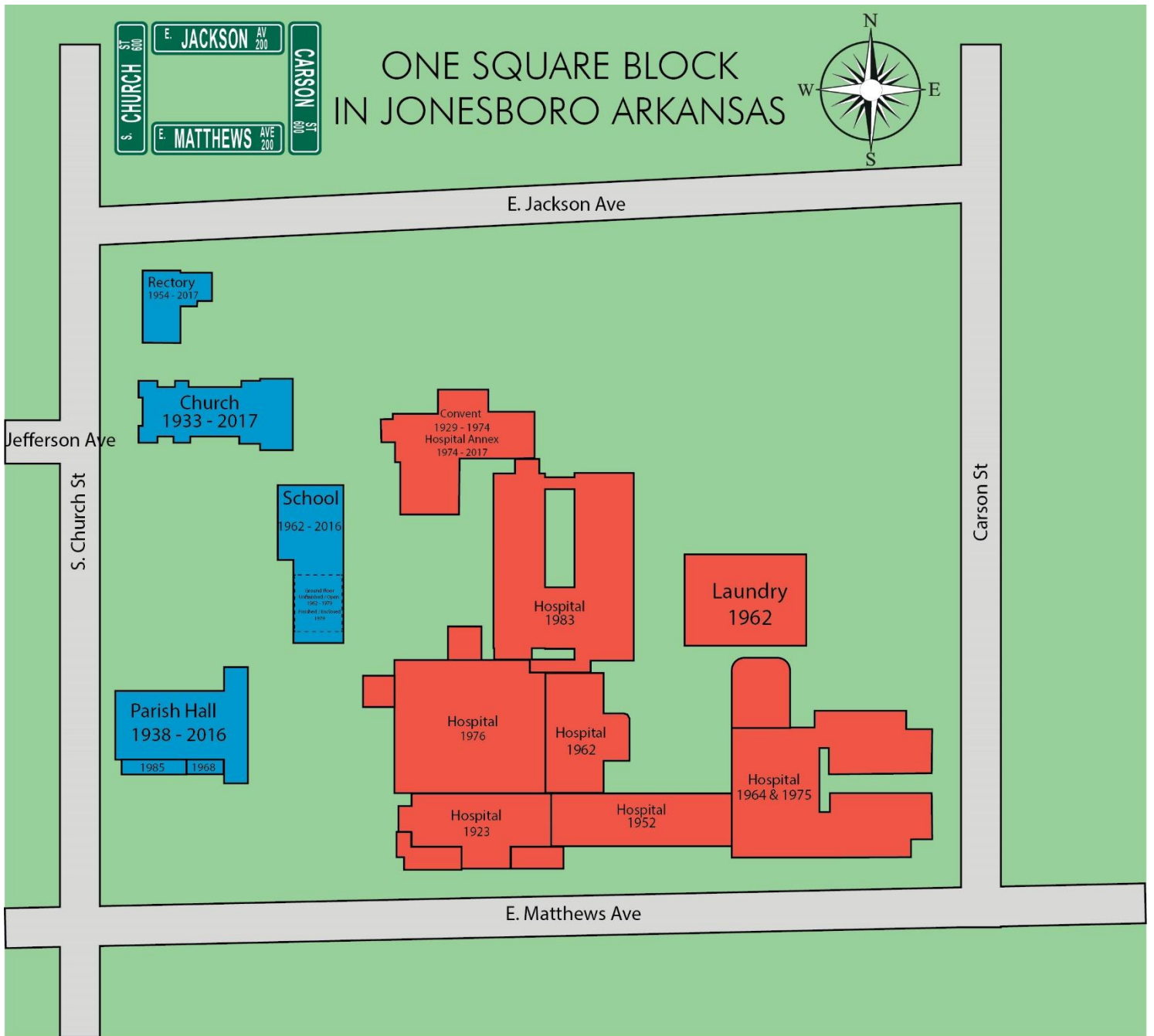
St. Bernard's Hospital, north side, showing the 1983 addition, the Annex, original 1929 Convent, on the right.

This view is from E. Jackson Ave looking southwest.

Picture source, *A Century of Serving*, page 82

### 1985 - Blessed Sacrament Parish Hall Addition

In 1985, an addition was made to the parish hall on the south side, next to the kitchen.

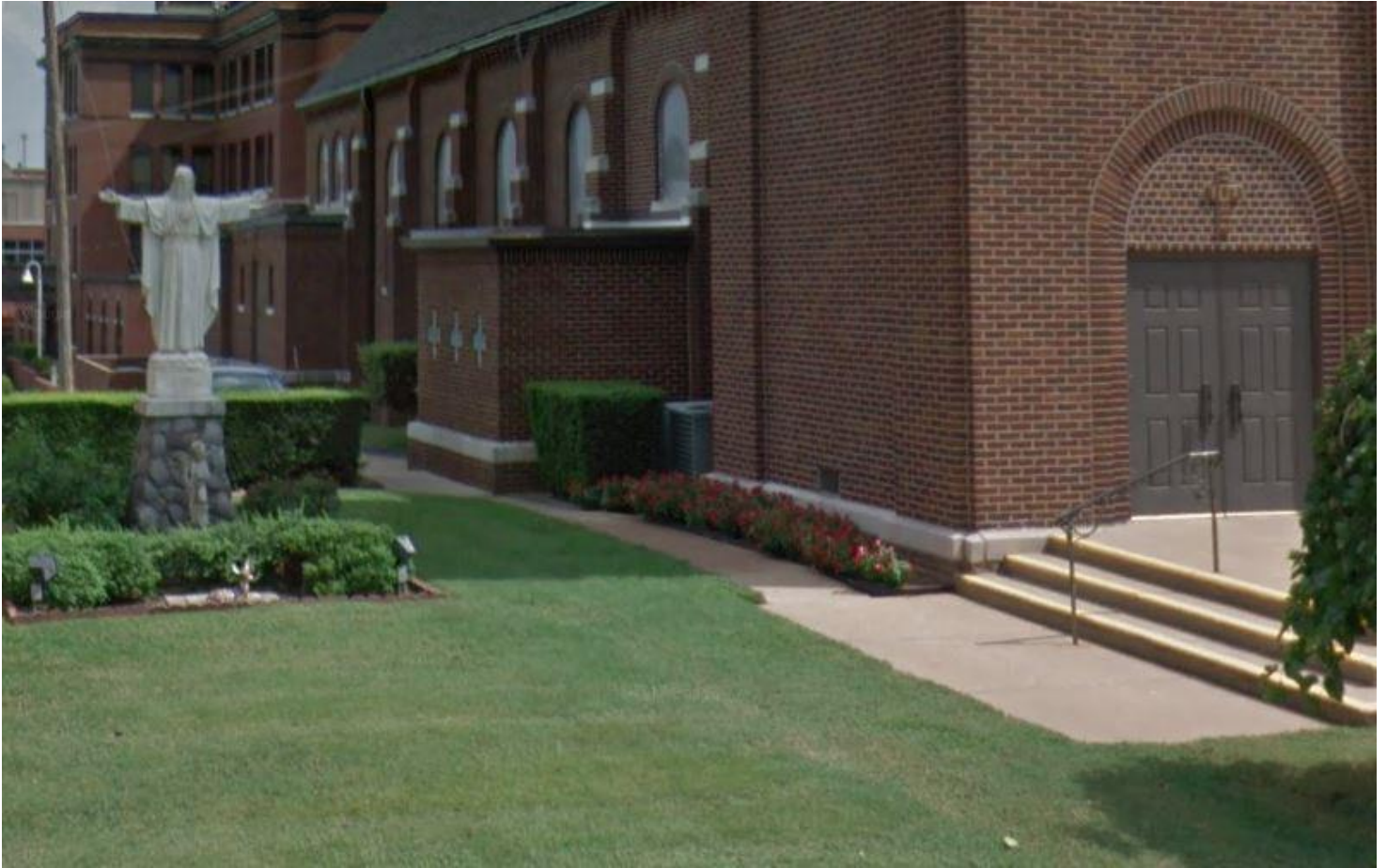




## Expanding Services - 1990s

### 1990 – Reconciliation Room

In 1990, the north side confessional was enlarged and converted to a reconciliation room.



Picture Source: *Google Street View*, north side of church  
View is southeast from S. Church St

1990 – East Wing Addition of Two Floors and Helipad

1991 – Ben E. Owens Cancer Treatment Center

1991 – Parking Garage

In 1989, ground was broken on the Ben E. Owens Cancer Treatment Center. The construction included the addition of two floors on the east wing of the hospital, a helicopter landing pad, the cancer treatment center and a multi-level parking deck. The Ben E. Owens Cancer Treatment Center opened in the spring of 1991.



St. Bernard's Hospital, East Wing, east side  
View is looking northwest from E. Matthews Ave and Carson St  
Picture Source: *Google Street View*



St. Bernard's Parking Garage  
View is southwest at corner of E. Jackson Ave & Carson St  
Picture Source: *Google Street View*, northeast corner



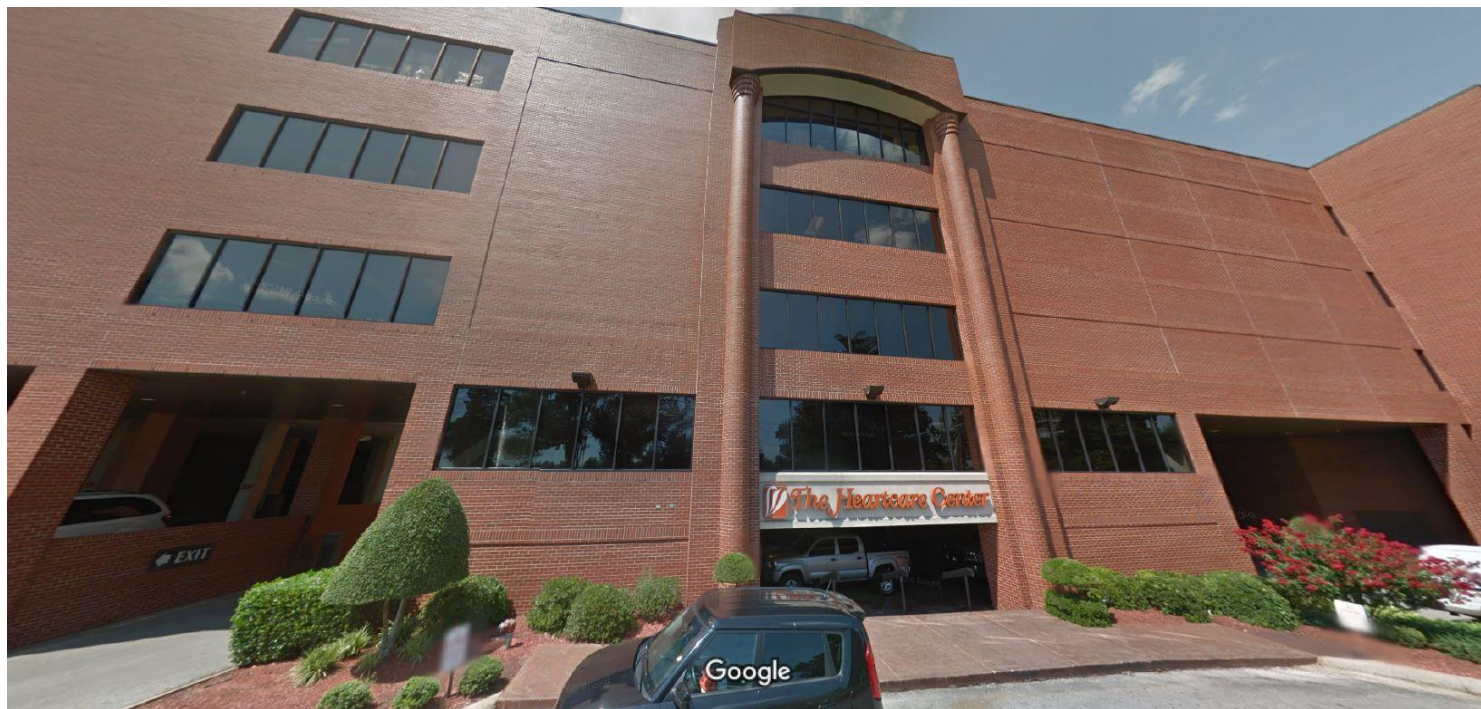
Ben E. Owens Cancer Treatment Center, north side  
View is southeast from E. Jackson Ave  
Picture Source: *stbernards.info*

1994 – Aerial View of the One Block

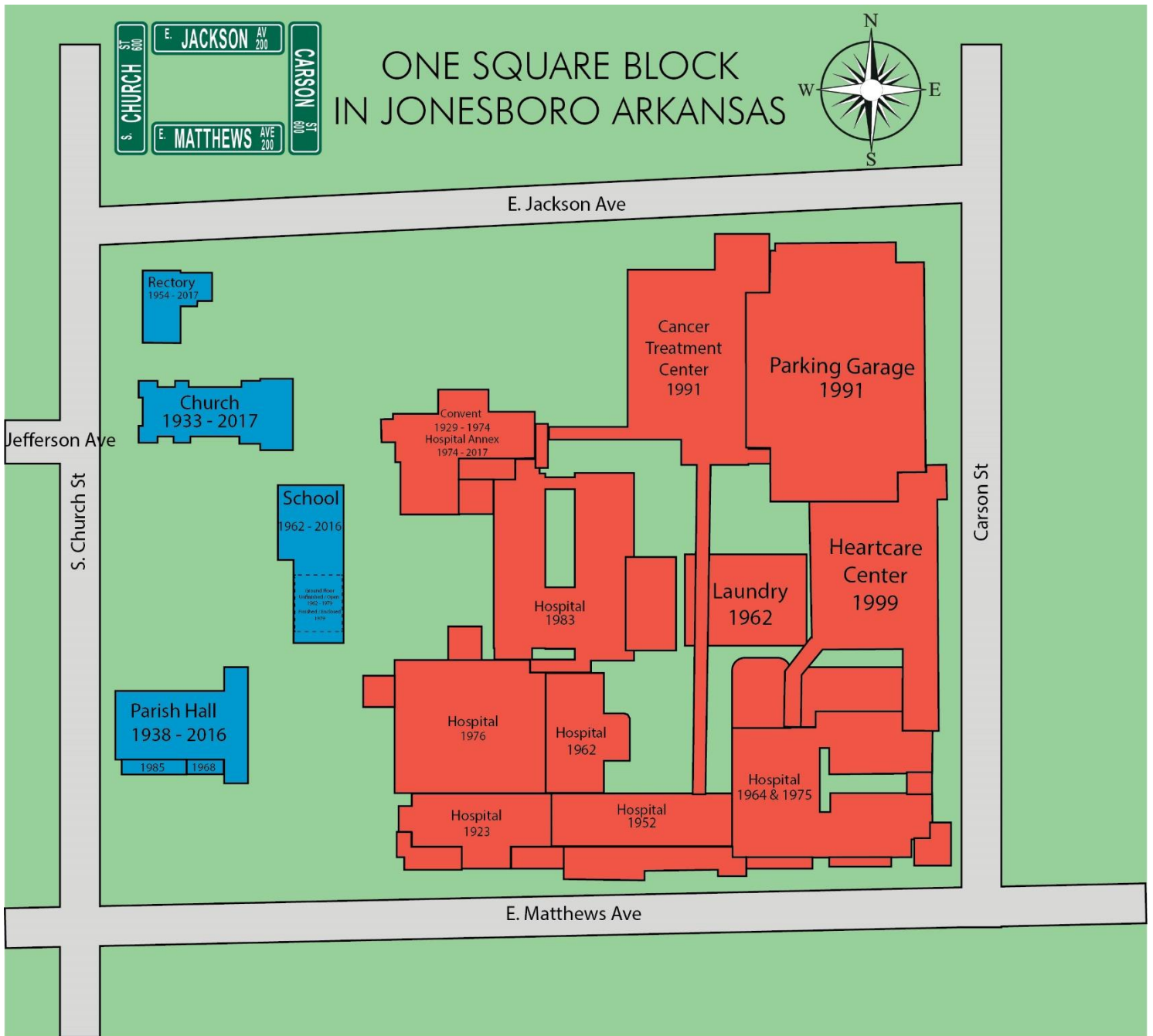


1999 - Heartcare Center

On March 19, 1999, St. Bernard's dedicated a new \$9 million Heartcare Center designed to consolidate services including nuclear medicine. The Heartcare Center included three cardiac cath labs and a new waiting room for families of patients.



St. Bernard's Heartcare Center, east side  
View is looking west from Carson St  
Picture Source: *Google Street View*



## One Square Block - 2010s

2001 – Aerial View of the One Block



2006 – Aerial View of the One Block



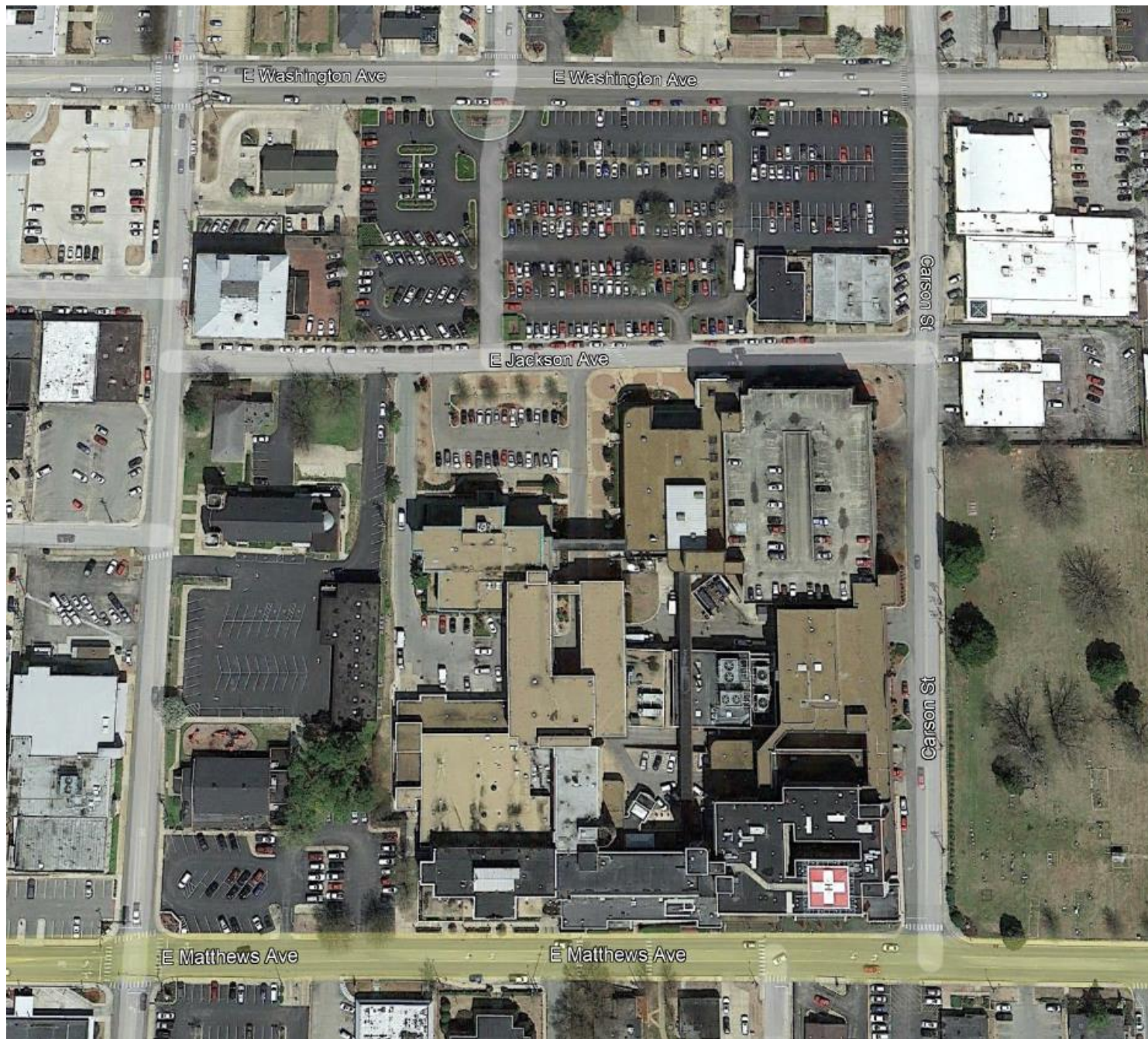


Blessed Sacrament Parish Moves Out of the One Square Block - 2010s

2010 – Aerial View of the One Block









## 2016 & 2017 - Demolition of Blessed Sacrament Parish Buildings

In 2000, Blessed Sacrament purchased 10 acres land on E. Highland Dr for use of expansion, but originally did not plan to move the church. In 2002, they purchased an additional 10 acres to increase the size to 20 acres on E. Highland Dr. In 2010, they broke ground for a new Blessed Sacrament School on this property and it was completed in 2011. In 2014, the church was notified that St Bernard's was interested in purchasing the land where the church, old school and parish hall were. On May 21, 2015, The Diocese of Little Rock signed a letter of intent to sell the property occupied by Blessed Sacrament Church. The property was sold in two stages, allowing the church to be used until December 2017. The final service in the church was held on October 1, 2017.

In 2016, the school and parish hall buildings were demolished, then in 2017, the church was demolished.



Blessed Sacrament Parish Hall Demolition  
North side of Building, facing the church.  
View is looking south from the church.  
Picture Source: *KAIT-TV, June 9, 2016*



Blessed Sacrament School Demolition  
Back of Building.  
View is looking west from St. Bernard's  
Picture Source: Unknown



Blessed Sacrament School Demolition  
Front of Building, facing S. Church St.  
View is looking Southeast from the church.  
Picture Source: *KAIT-TV, June 21, 2016*



Blessed Sacrament Church Demolition  
South side of Building.  
View is looking north from the former parish hall site.  
Picture Source: *NEA Report, October 31, 2017*



Blessed Sacrament Church Demolition  
North side of Building.  
View is looking southwest from behind the rectory.  
Picture Source: *KAIT-TV, November 1, 2017*

2016 – Ben E. Owens Cancer Treatment Center Renovation and Expansion

2018 – Heart Care Center Renovation and Expansion

2019 – Major Addition to St. Bernard’s Hospital

In 2015, St. Bernard’s announced a four phase \$130 million project to be completed by 2019. This expansion will move the front door of the hospital from E. Matthews Ave to E. Jackson Ave greatly changing the look of the One Square Block.

The first phase was a \$9 million expansion to the hospital’s cancer treatment center. This brought all components of the cancer services line together in a single facility on the main campus and allowed space for future growth. A covered patient drop off was added on E. Jackson Ave. This was completed in 2016.

The second phase was a \$8 million expansion at the heart care center that would allow the hospital to do more invasive services including cardiac catheterization. They expanded the deluxe labs, patient and family-focused care areas. The electrophysiology facilities were also expanded.

The third phase was a \$75 million to add a 245,000 square foot facility that includes new surgical suites, 46-bed intensive care unit with room to expand and one floor that is a shelled space that allows future growth. A new three level tower was built that included an emergency helipad and an emergency entrance of S. Church St. This phase was completed in 2019.

The final phase will include renovations within the present medical center, including enhancements of patient rooms, public areas and kitchen and dining areas.



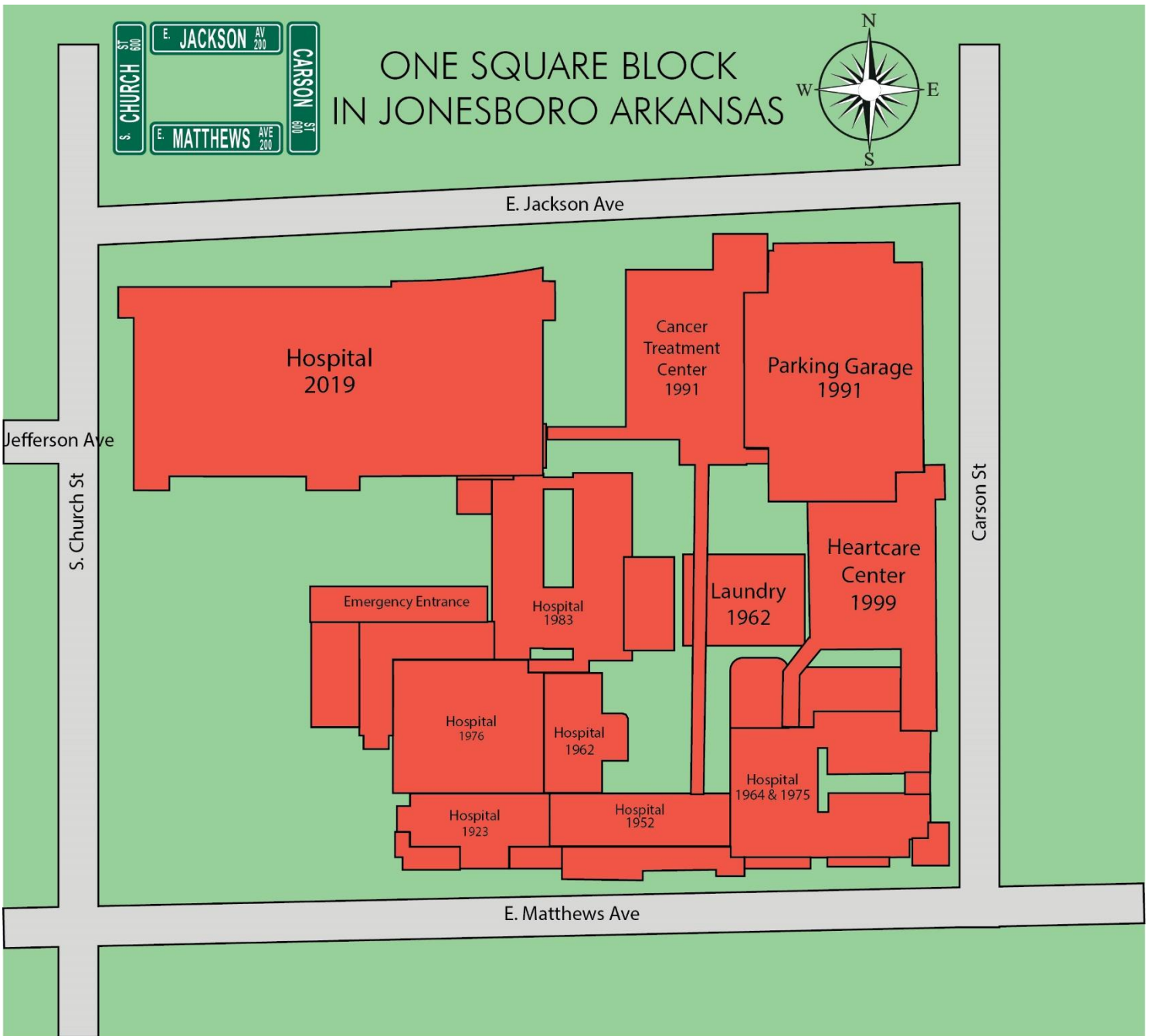
Ben E. Owens Cancer Center, north side  
View is southeast from E. Jackson Ave  
Picture Source: *nabholz.com*



St. Bernard's Medical Center, front, north side.  
View is looking south from E. Washington Ave.  
Picture Source: *Wikipedia*



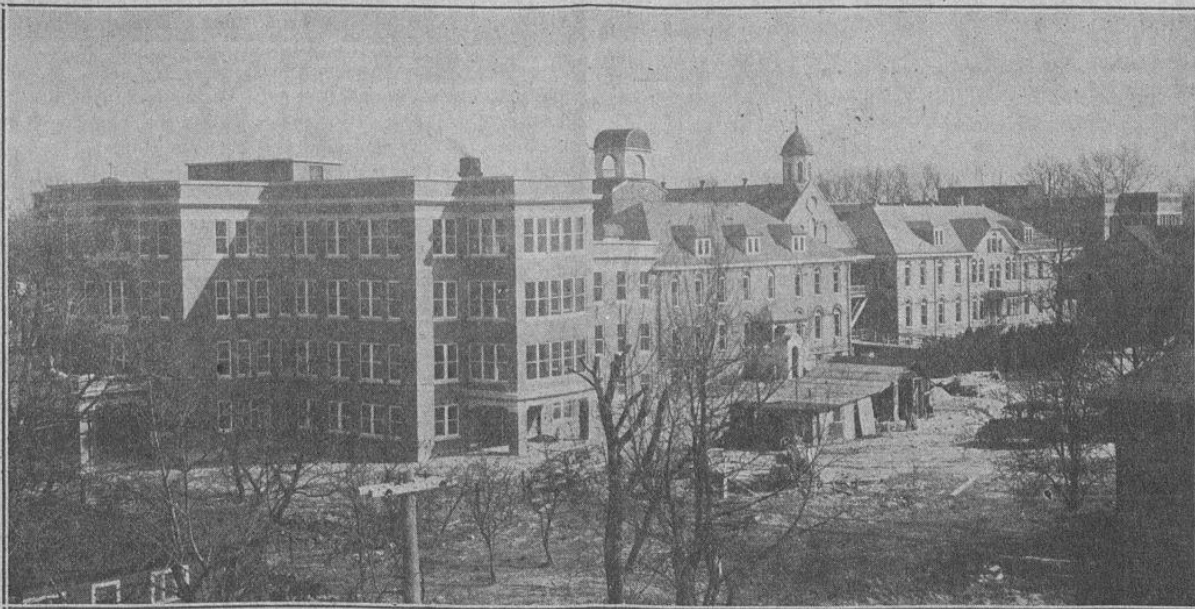








Blessed Sacrament Church, west side  
View is east from S. Church St  
Picture Source: Unknown



—Jonesboro Tribune.

**HOLY ANGELS' CONVENT, JONESBORO, ARK.**

The view pictures Holy Angels' Convent at the left, the Convent Chapel and St. Bernard's Hospital at the extreme right.

Holy Angels Convent, north and west sides  
View is southeast, from E. Jackson Ave, possibly from the Courthouse/Post Office Building  
Picture Source: *The Guardian*, April 27, 1929, Page 1



Holy Angels Convent, 1929 Building, north side  
View is looking south from E. Jackson Ave  
Picture Source: Post Card



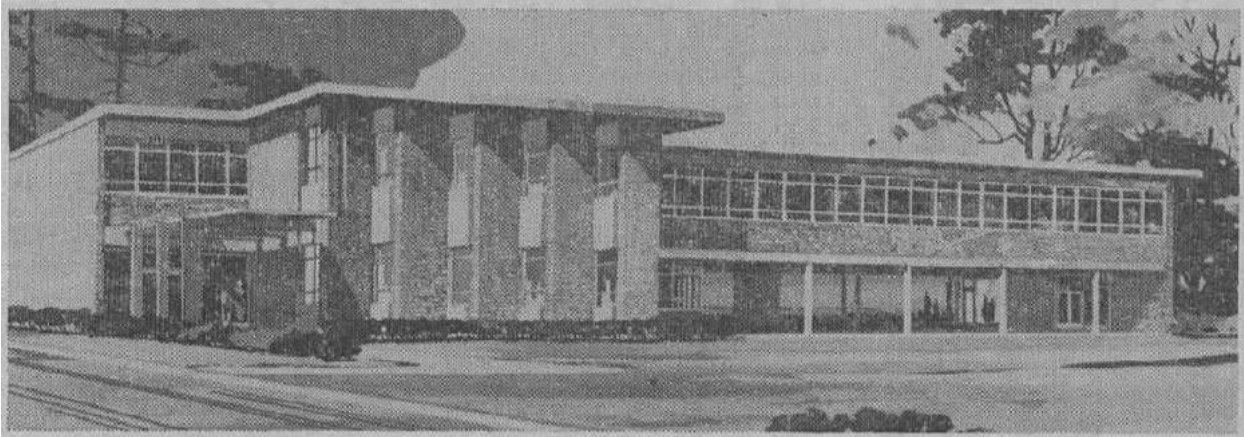
Blessed Sacrament Parish Hall, west side  
View is east from S. Church St.  
Picture Source: *Google Street View*



Blessed Sacrament Parish Hall, south side  
View is north from E. Matthews Ave  
Picture Source: *Google Street View*



Blessed Sacrament Parish Hall, north side  
View is southeast from S. Church St.  
Picture Source: Google Street View



**PROPOSED JONESBORO PARISH SCHOOL—** This beautiful edifice is scheduled for construction in Blessed Sacrament parish, Jonesboro. His Excellency Bishop Albert L. Fletcher will officiate at groundbreaking ceremonies on Monday, August 14, at 5 P.M. The pastor, The Very Rev. Msgr. M. F. Donovan, said the new school to replace outdated and overcrowded present facilities was made possible by a successful fund appeal that resulted in pledges of \$123,000. More than this will be spent to build

the new school, the pastor said. The balance will be borrowed. Weaver & Hiegel of Little Rock are architects for the project. The new school will provide six classrooms, a teachers' lounge, an office and library. Four classrooms will be on the second floor, two on the first. A covered play area under two of the upper floor classrooms is designed for ultimate enclosure to add another two classrooms. The building will have 12,000 square feet of floor space within a steel frame and masonry walls.

Proposed Blessed Sacramento School Building, west side  
View is east from S. Church St  
Picture Source: *The Guardian*, August 4, 1961, Page 1



**START OF JONESBORO SCHOOL PROJECT**  
—His Excellency Bishop Albert L. Fletcher is pictured here as he recently turned the first shovel of earth on the site of a proposed new Blessed Sacrament Parish School. Flanking the bishop are The Very Rev. Msgr. M. F. Donovan, left, the Jonesboro pastor, and The Rev. Louis

Deuster, chaplain of St. Bernard's Hospital. Holding the crozier in the background is the Little Rock diocesan chancellor, The Right Rev. Msgr. Joseph A. Murray. Others in the picture are visiting priests, Olivetan Benedictine Sisters, and laymen.

Blessed Sacramento School, 1962 Building, Groundbreaking, 1922 School Building in background.  
View is southwest

Picture Source: *The Guardian*, August 25, 1961, Page 1



Blessed Sacrament School, west side  
View is east from S. Church St.  
Picture Source: *Google Street View*



**St. Bernard's Hospital.**

Jonesboro's premier home for the sick; a place of refuge for the afflicted; the joy of the suffering and the pride of all the people of the metropolis of Northeast Arkansas.

St. Bernard's Hospital, 1906 Addition, east side  
View is looking west

Picture Source: *The Southern Guardian*, October 10, 1914, Page 25



St. Bernard's Hospital, southwest side  
View is looking northeast from E. Matthews Ave  
Picture Source: Post Card

## Center Of Catholic Activity In Jonesboro



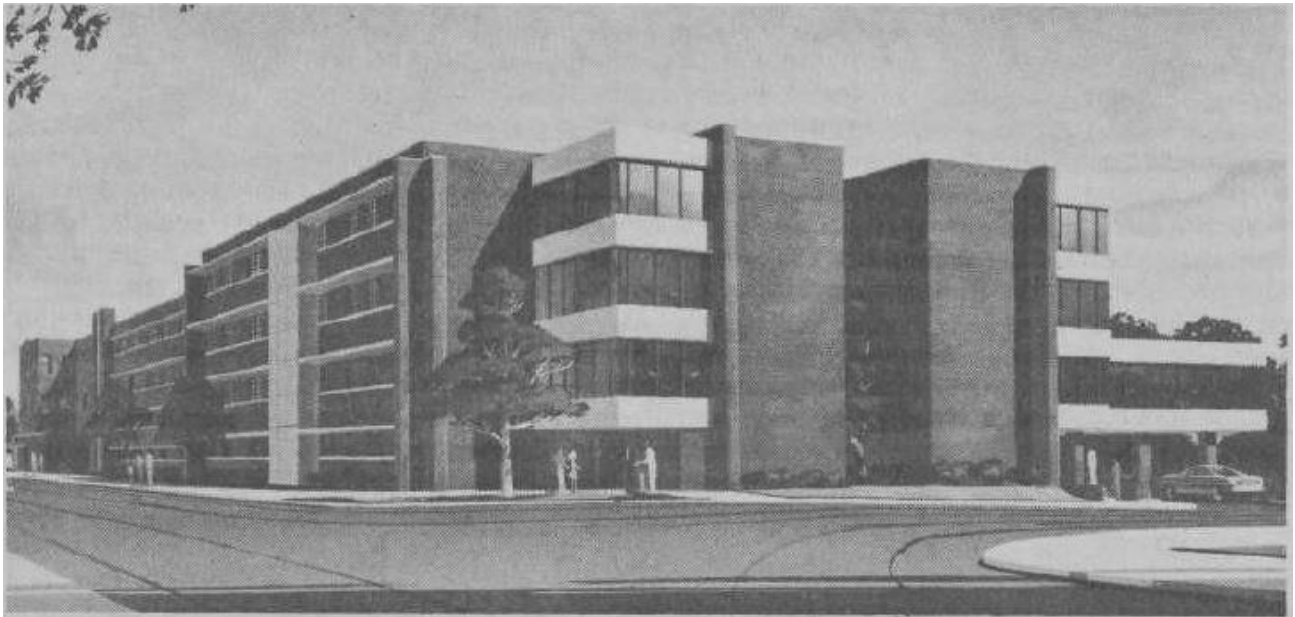
Jonesboro.—St. Bernard's Hospital is a part of a large area of the city which is devoted to Catholic activities. In addition to the Infirmary, The Olivetan Benedictine Sisters have their Motherhouse here. From Jonesboro, the Superiors of the Order direct the Sisters in the many institutions under their care. The parish church, the school and the rectory adjoin the Hospital.

Blessed Sacrament Parish, Holy Angels Convent, St. Bernard's Hospital and downtown.

View is looking northwest

Picture Source: *The Guardian*, July 9 1954, Page 7



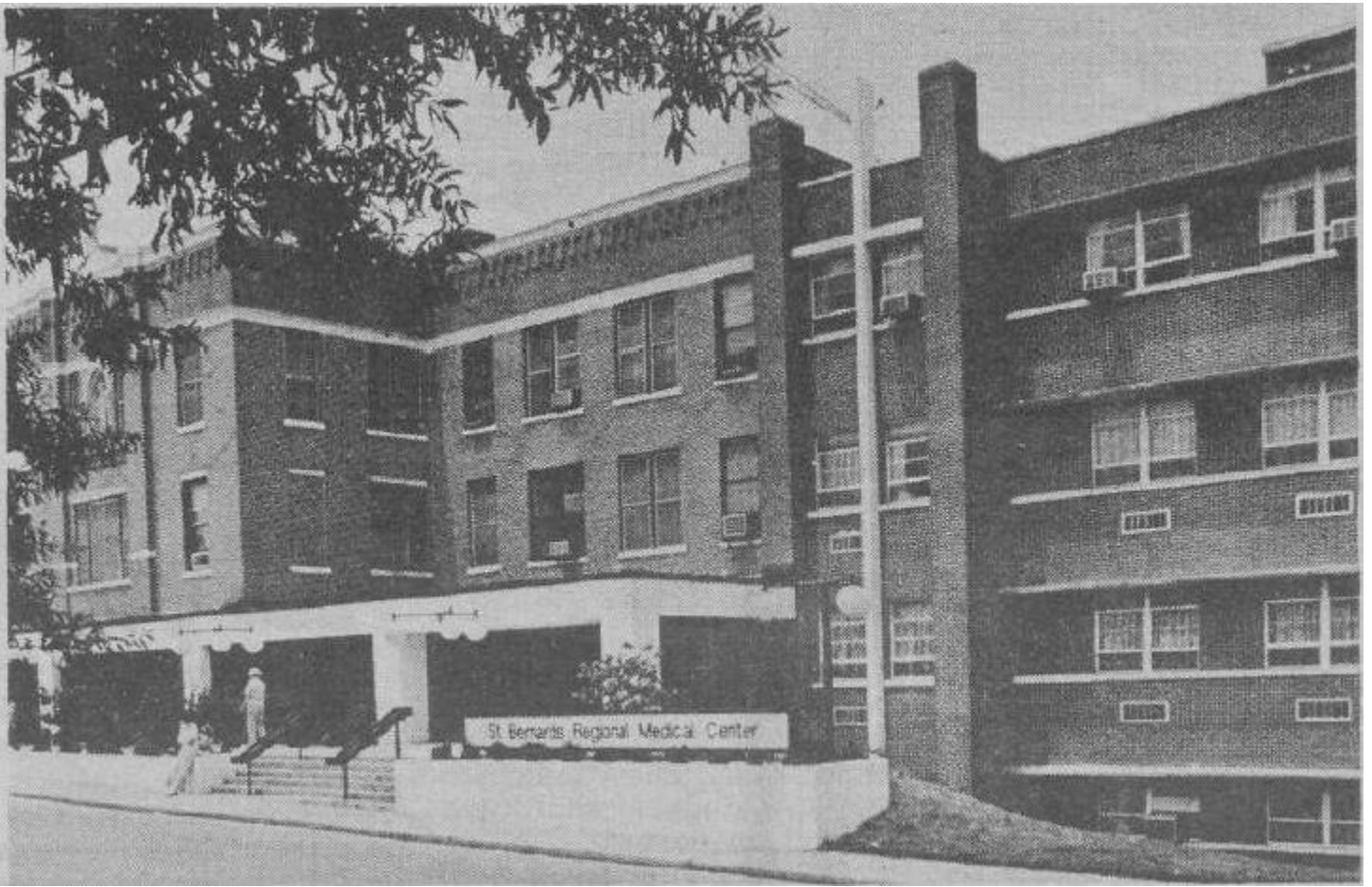


### *How Expanded St. Bernard's Hospital Will Look*

**This is an architect's sketch of the Jonesboro hospital, operated by the Olivetan Benedictine Sisters, as it will appear in 1975 after completion of a \$6.7-million expansion now underway. Part of the new construction will be on land presently occupied by Holy**

**Angels Convent, motherhouse of the Olivetan Sisters, who are building a new convent north of the city. The Jonesboro architectural firm of Stuck-Frier-Lane-Scott-Beisner, Inc., drafted plans for the project.**

St. Bernard's Hospital architect drawing, east side  
View is looking northwest from E. Matthews Ave and Carson St  
Picture Source: *The Guardian*, November 30, 1973, Page 8



St. Bernard's Hospital, main entrance, south side  
View is northwest from E. Matthews Ave  
Picture Source, *The Guardian*, July 15, 1975, Page 8



W.H. Jelks Home, Northeast Corner of E. Matthews Ave and S. Church St.  
View is north from E. Matthews Ave, S. Church is along the left side of picture.  
Picture Source: Amy McGill

Picture was taken before the Parish Hall was built. The house behind the Jelks' Home where the Parish Hall was built, behind that is the Hall/School Building built in 1897. Don't have the date of when this home was removed, but a gas station was located on this spot, then the parking lot for St. Bernards Hospital.

## Revisions

<b>Revision Date</b>	<b>Version</b>	<b>Changes Made</b>
April 3, 2021:	1.0	Initial Release
April 4, 2021:	1.1	Updated maps, added one photo and put picture sources for More Picture section.
April 5, 2021:	1.2	Updated spelling error, added 1990 renovation of confessional on the north end of church to a reconciliation room, added photos for 1990 and 1991 changes to St. Bernard's Hospital and put descriptions on Misc Photos section.
July 3, 2021:	1.3	Added 1907 Rectory
January 16, 2024:	1.4	Added 1957, 1976, 1994, 2001, 2006, 2009, 2010, 2013, 2015, 2019, 2021 Aerial Views of the One Square Block. Added photo of Jelk House at corner of E Matthews Ave and Church St in Misc Pictures.