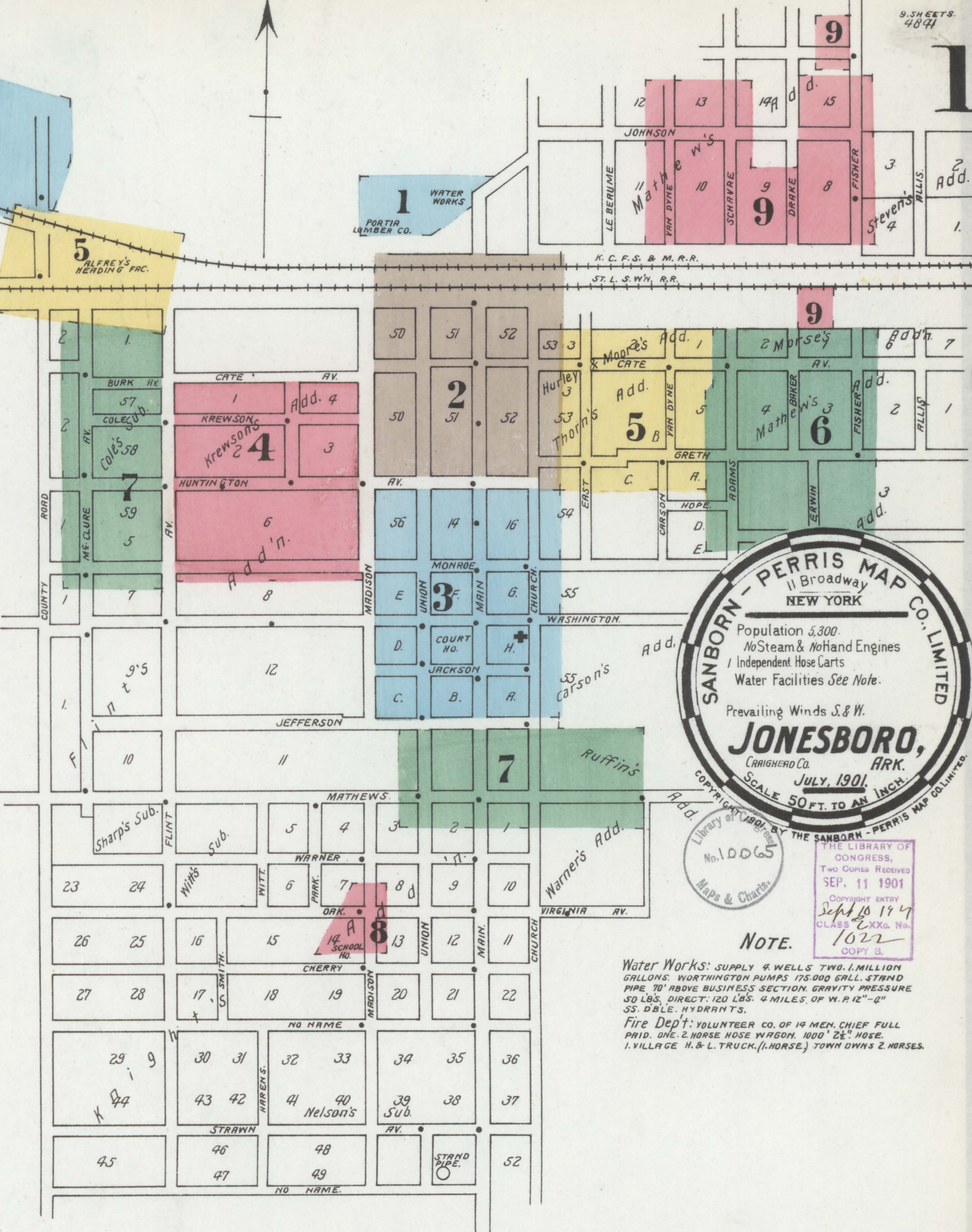


INDEX.

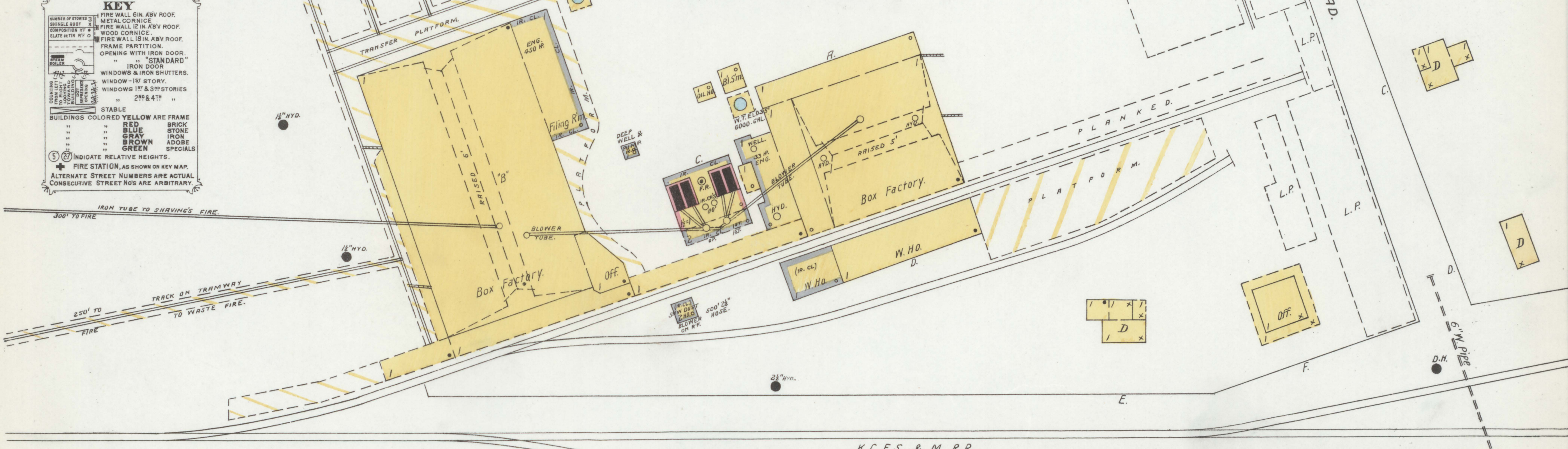
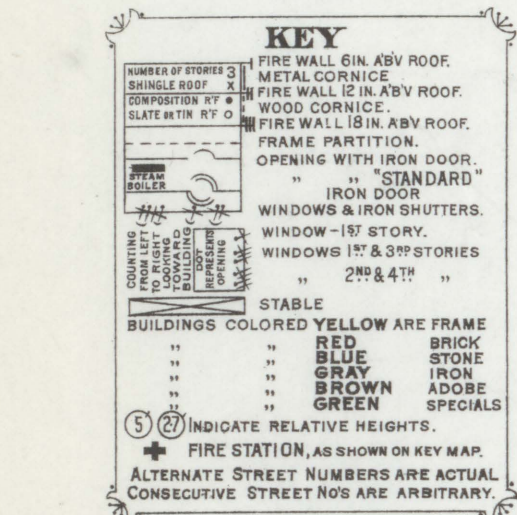
STREETS.		SPECIALS.	
A. St., arbitrary.	4	Alfrey, H., Heading Factory	5
Adams	801-824	American Handle Co.	7
Baker	601-630	Arlington Hotel	2
Burk Ave.	301-207	Baptist Church (brick)	3
Cate Ave.	101-143	Barton, P. C., Lumber Yd., Planing Mill and Corp. Mill	2
Chapman & Dewey Lumber Co.	101-117	Bohlen Huse Ice Factory	2
Church	401-538	Carson Carbonating Co.	9
Clark	501-532	Chapman & Dewey Lumber Co., Box Factory and Lumber Yard	1
Drake	401-423	Chapman & Dewey Lumber Co., Box Factory and Lumber Yard	2
East	301-324	Christian Church	8
Fisher	401-416	Commercial Hotel	3
Flint Ave.	301-312	Court House and Jail	3
Greth	201-222	Episcopal Church	7
Hope	101-125	First M. E. Church (south)	7
Huntington Ave.	13-18	Hixon & Broadway's Tannery	8
"	19-34	Indiana Hotel	2
"	32-35	Jonesboro Power Co.	5
"	36-59	" Roller Mills	2
"	201-206	" Stave & Hardwood Co.	2
"	S. Side Madison to Church	" Wagon Mfg Co.	9
Jackson	101-120	Water Co.	1
Jefferson	301-308	K. C. F. S. & M. R. R. Depots	2
Johnson	101-117	Buggy and Wagon Stock Mfr's	8
Krewson Ave.	201-236	Malone Theatre	3
McClure	401-425	New Albany Hotel	2
Madison	301-318	Portia Lumber Co.	1
"	401-412	Post Office Bld'g	3
"	501-516	Presbyterian Church	9
"	near Oak	Public School	7
Main	201-218	St. Bernard's Hospital	7
"	401-553	St. L. S. W. R. R. Freight Depot	2
Mathews	401-427	" Round Ho.	2
Monroe	101-125	St. Roman's Cath. Church & School	2
"	401-415	Second M. E. Church	2
"	501-506	Star Boarding Ho.	2
Oak	15-24	Stuck, C. A., & Sons	2
Schavre	501-531	Lumber Yard and Planing Mill	2
Union	101-116	Synagogue	2
"	401-435	Warner Hotel	2
"	501-533	West Plains Hotel	2
Van Dyne	401-414	Wrape, H., Co., The Stave Mill	2
"	402-430		

NOTE.—House numbers given are arbitrary.

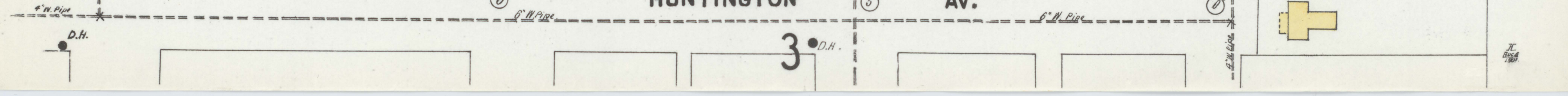
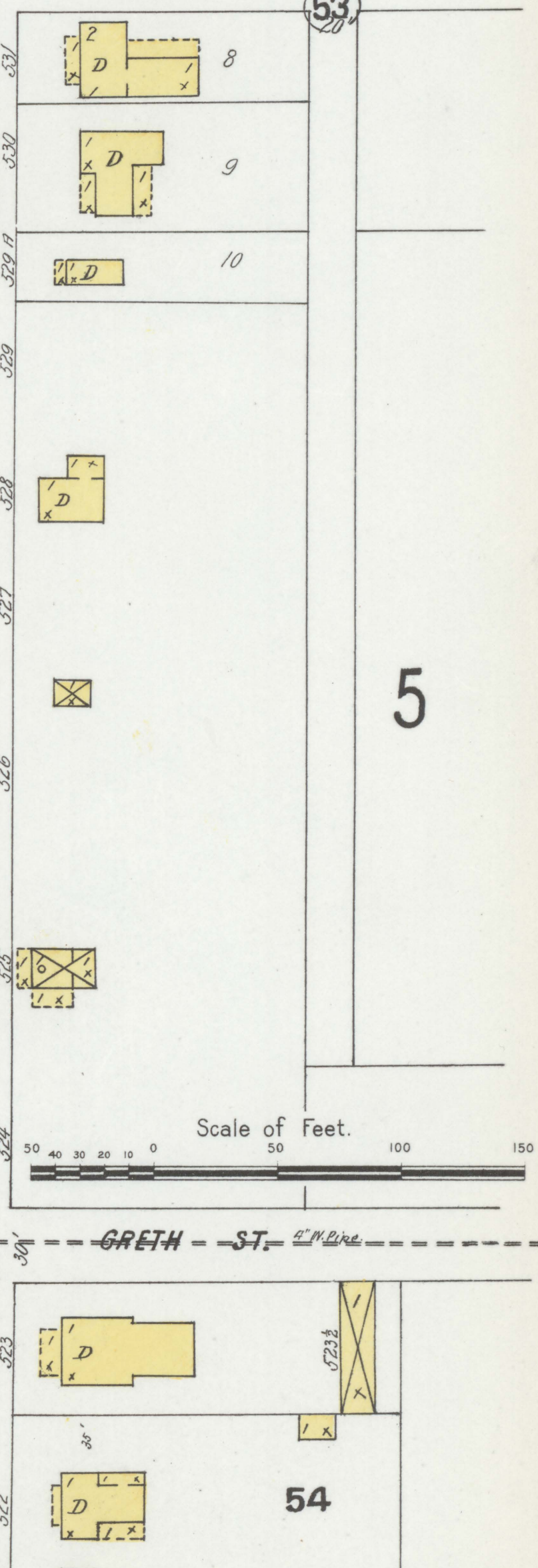
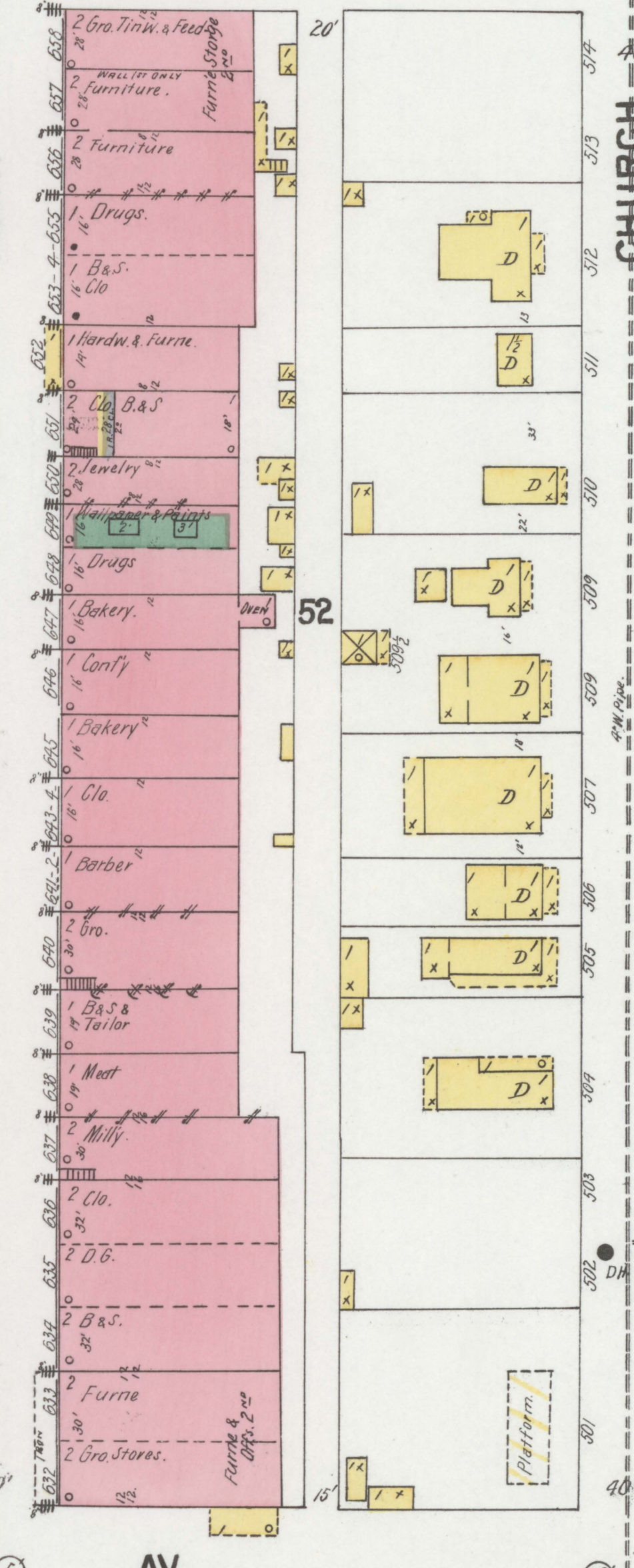
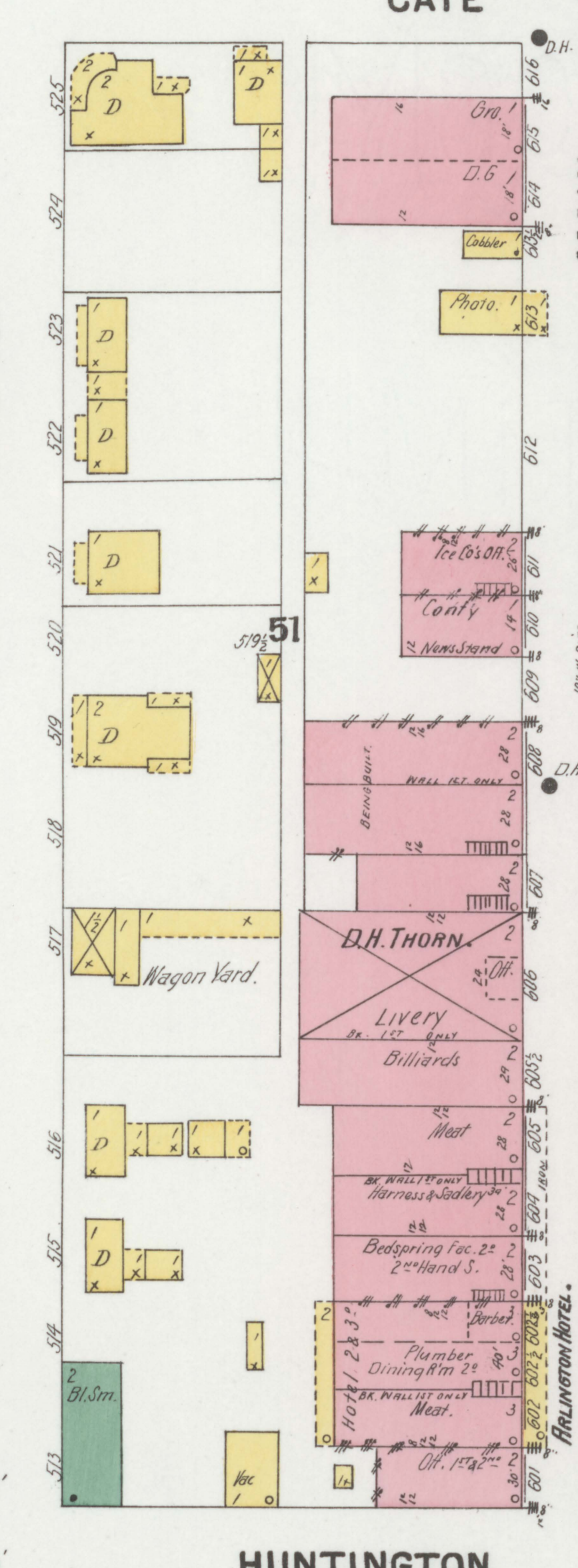
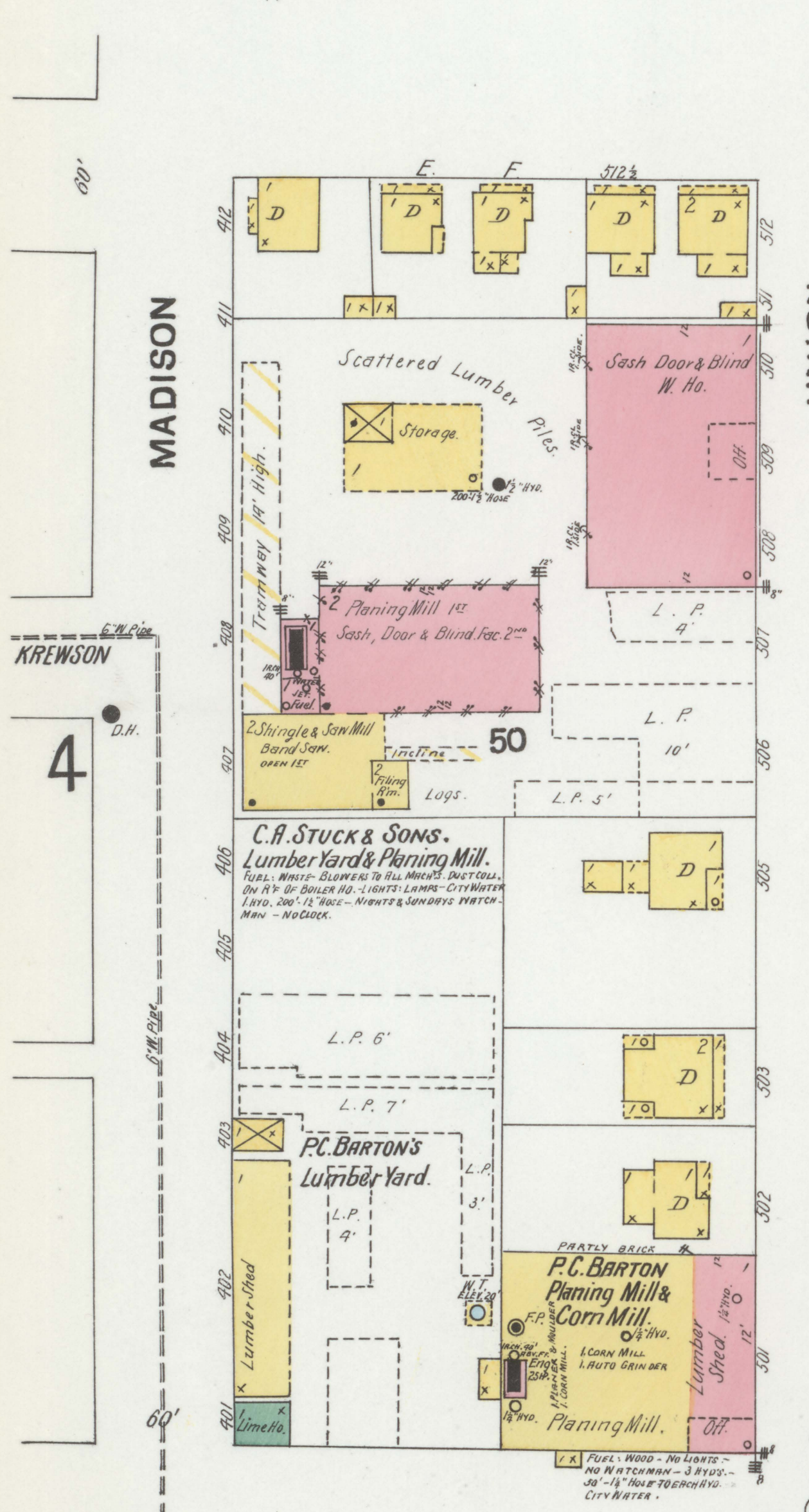
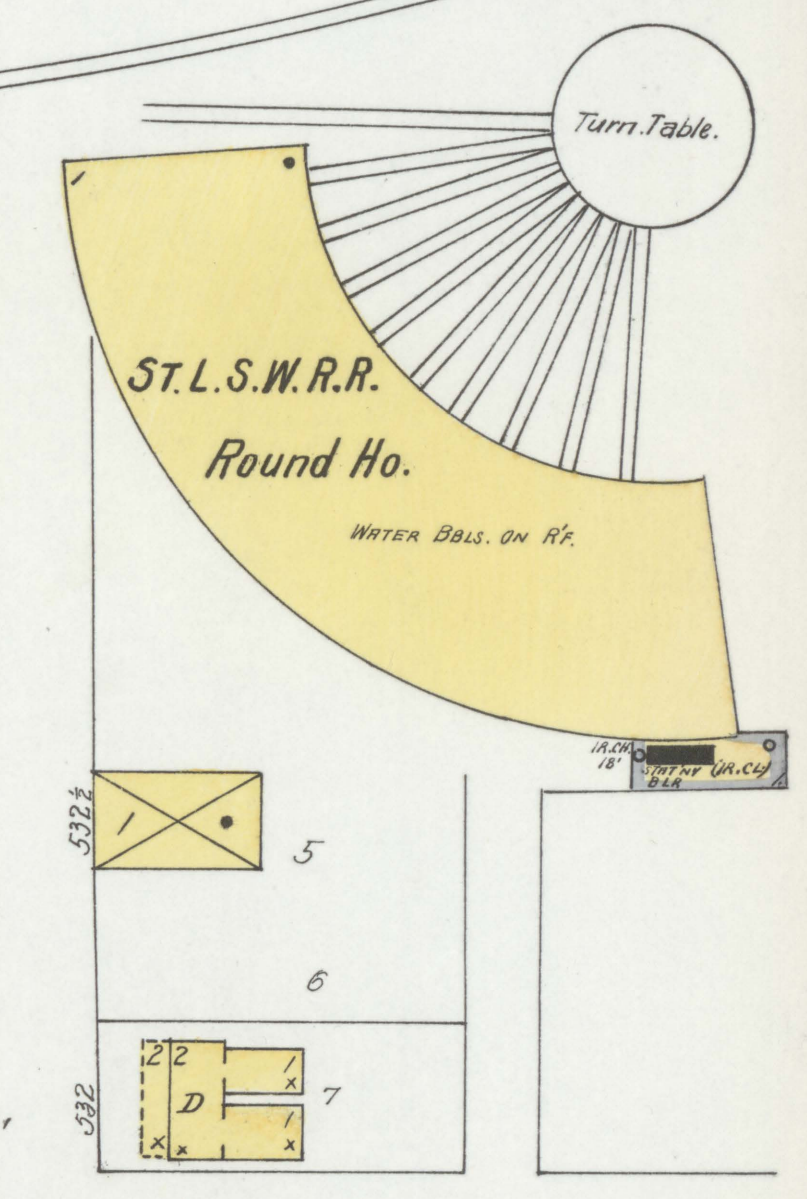
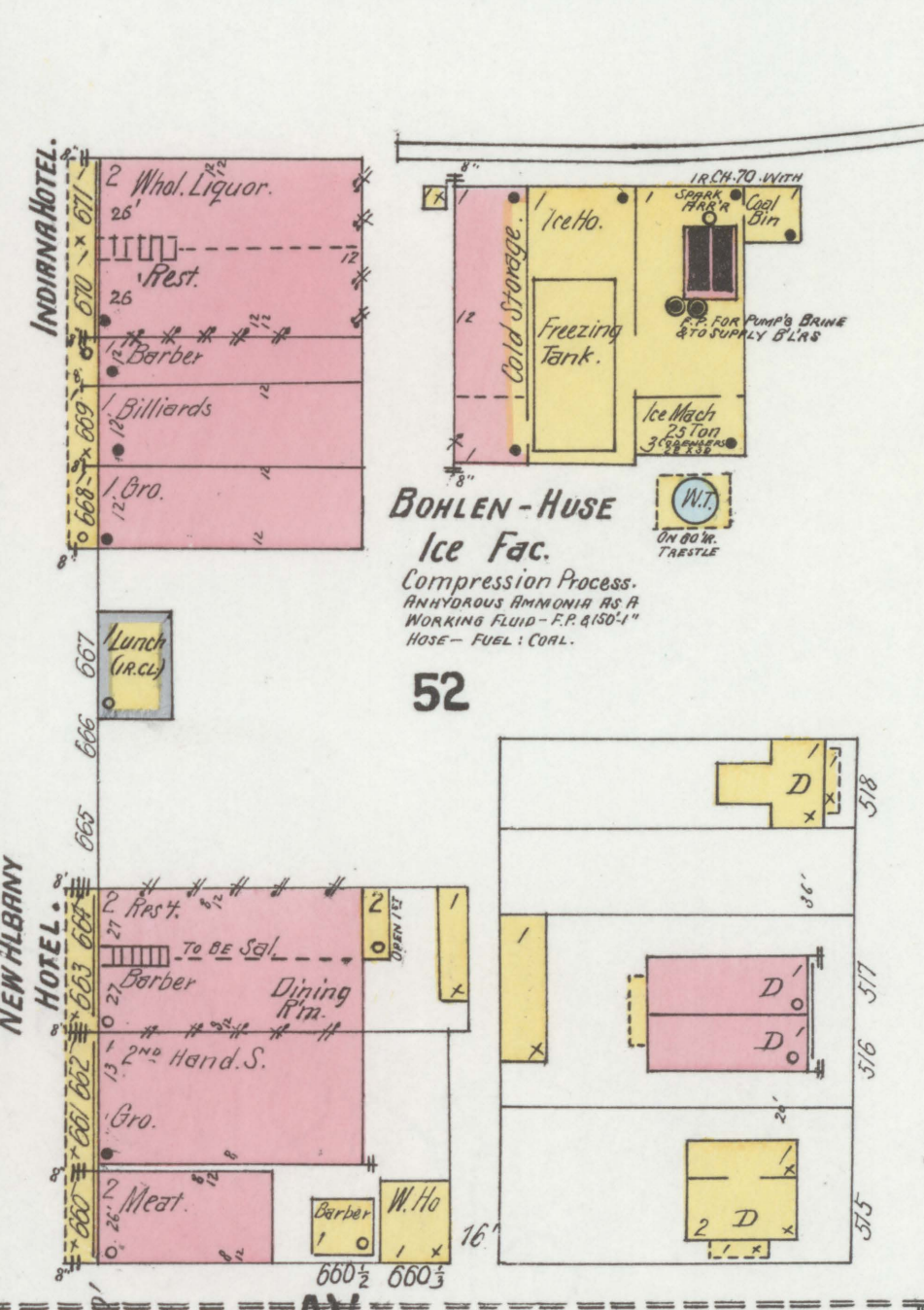
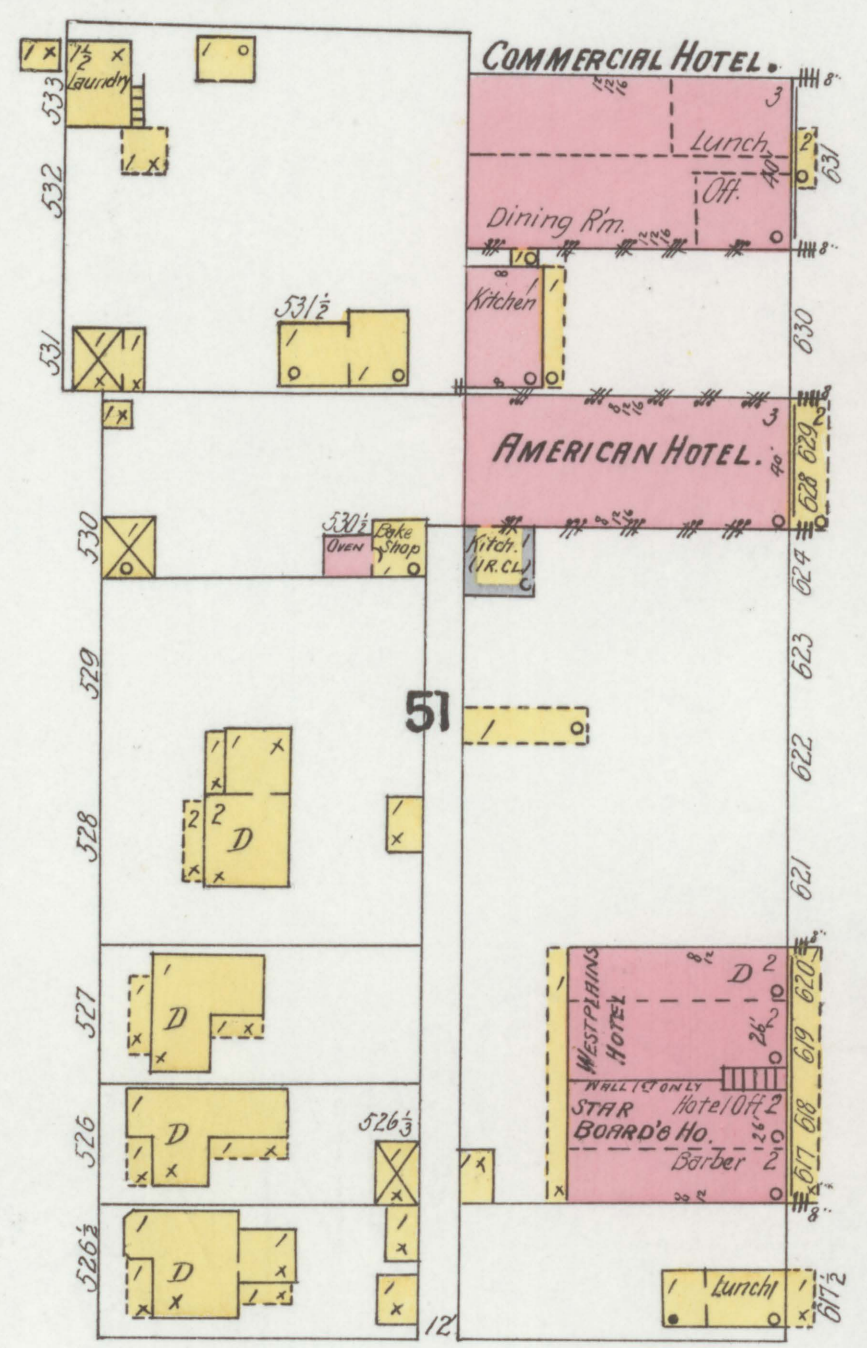
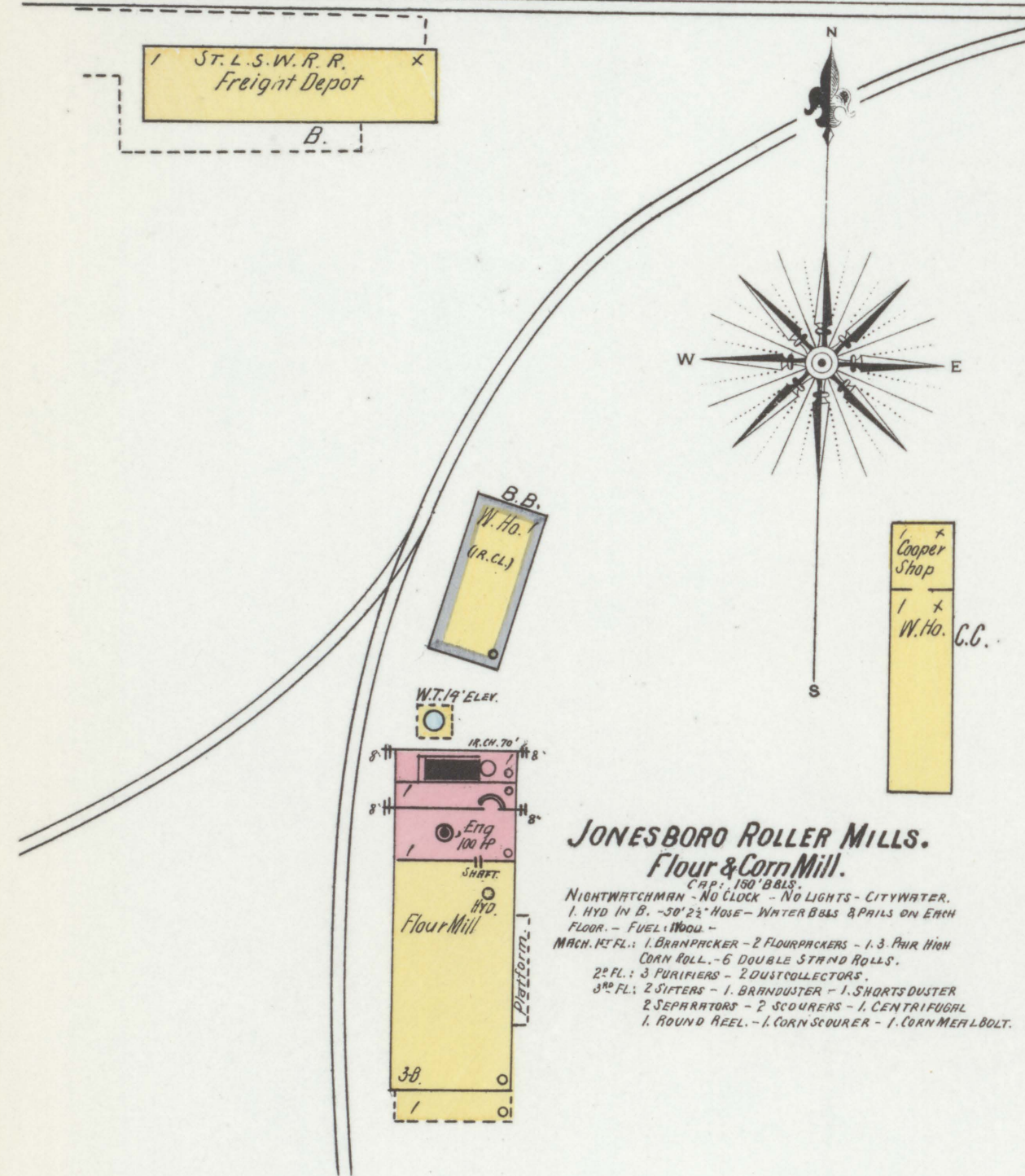
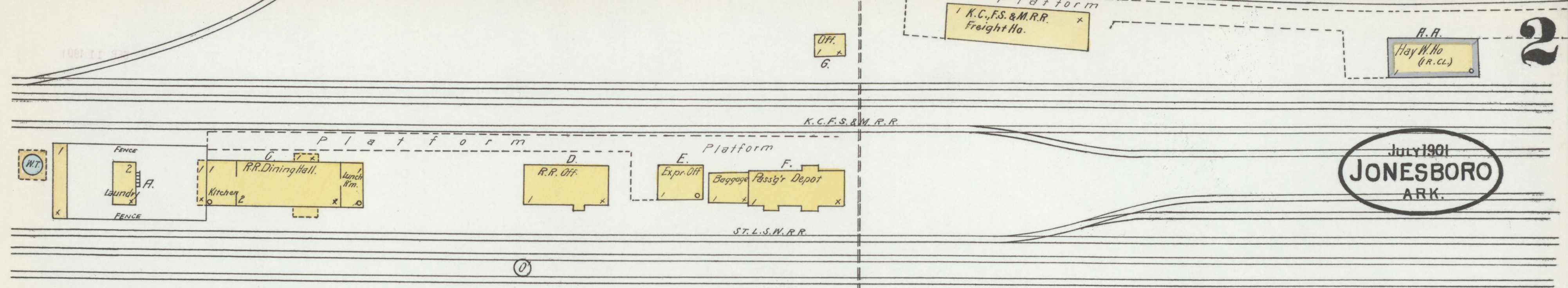


CHAPMAN & DEWEY LUMBER CO. Box Factory & Lumber Yard.

NIGHT & SUNDAY WATCHMAN, E.C. MAGNETO CLOCK, 6 STATIONS. ORGANIZED FIRE CO. MEN LIVE ABOUT PREMISES. FUEL: SHAVINGS BURNED TO WHEELS. AUTO. BOILER FEED. IRON CONVEYORS. LIGHTS: ELECT. INCANDESCENT DYNAMO IN ENG. RM. CITY WATER & 2 DEEP WELLS. 1 COOK & 1 HUNTER DEEP WELL PUMPS WITH WIRE PIPES 7 1/2" & 10" & 2 LEVEL W. TANKS OF 5000 GALLONS EACH. TWO 2 1/2" & 3" FIRE 1 1/2" HOSE IN YARD. 500' 2 1/2" HOSE. 250' 1 1/2" HOSE OUTSIDE. THREE 1 1/2" HOSE IN 10' WITH 2 1/2" HOSE TO EACH. 100' 1 1/2" HOSE IN BOLLER HO. HOSE 1 1/2" HOSE IN ENG. RM. BLD'G. 3" PERFORATED STEAM PIPE IN CHAYING YARD. TWO 1 1/2" HOSE. TO BE PUT UNDER FLOOR OF 'B' & 1 ON ROOF WITH 30' 1 1/2" HOSE. TO EACH WATER BARRELS & BUCKETS ON ROOFS & PLATFORMS.

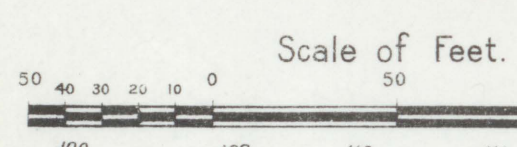
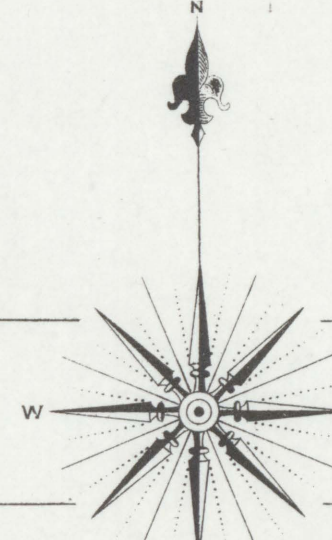
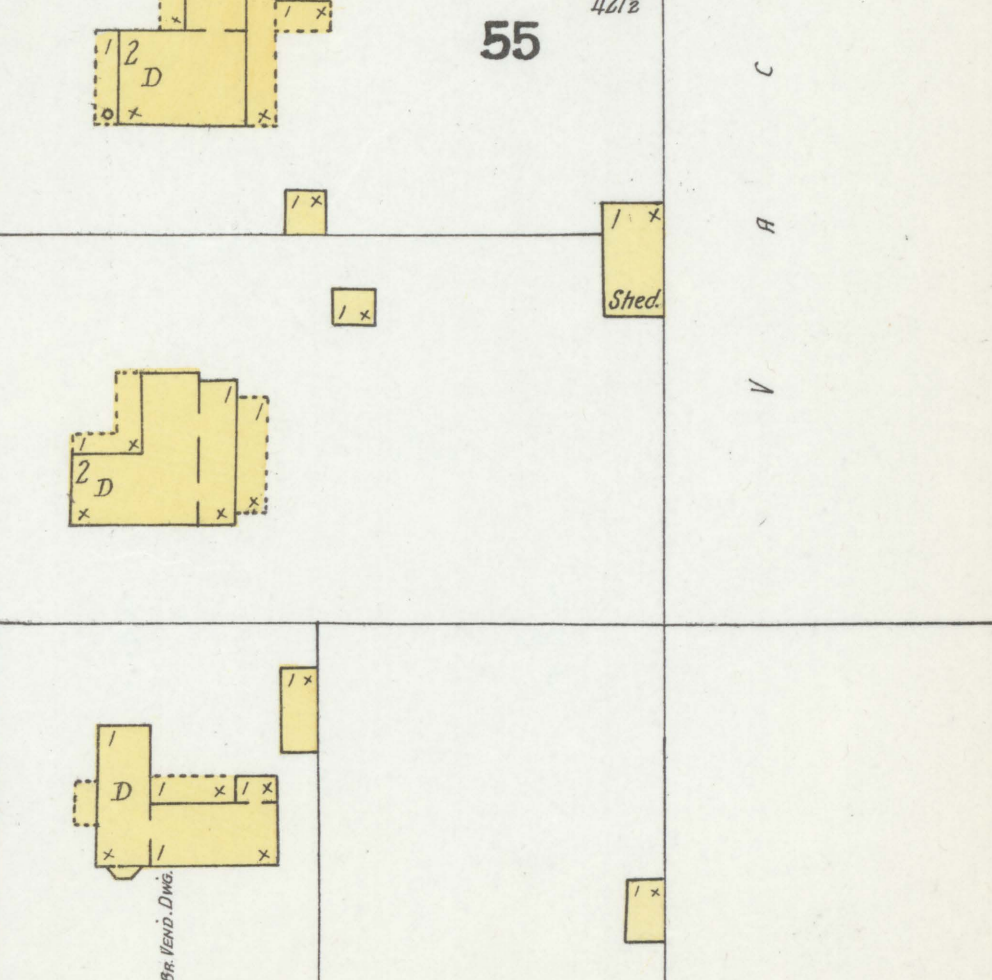
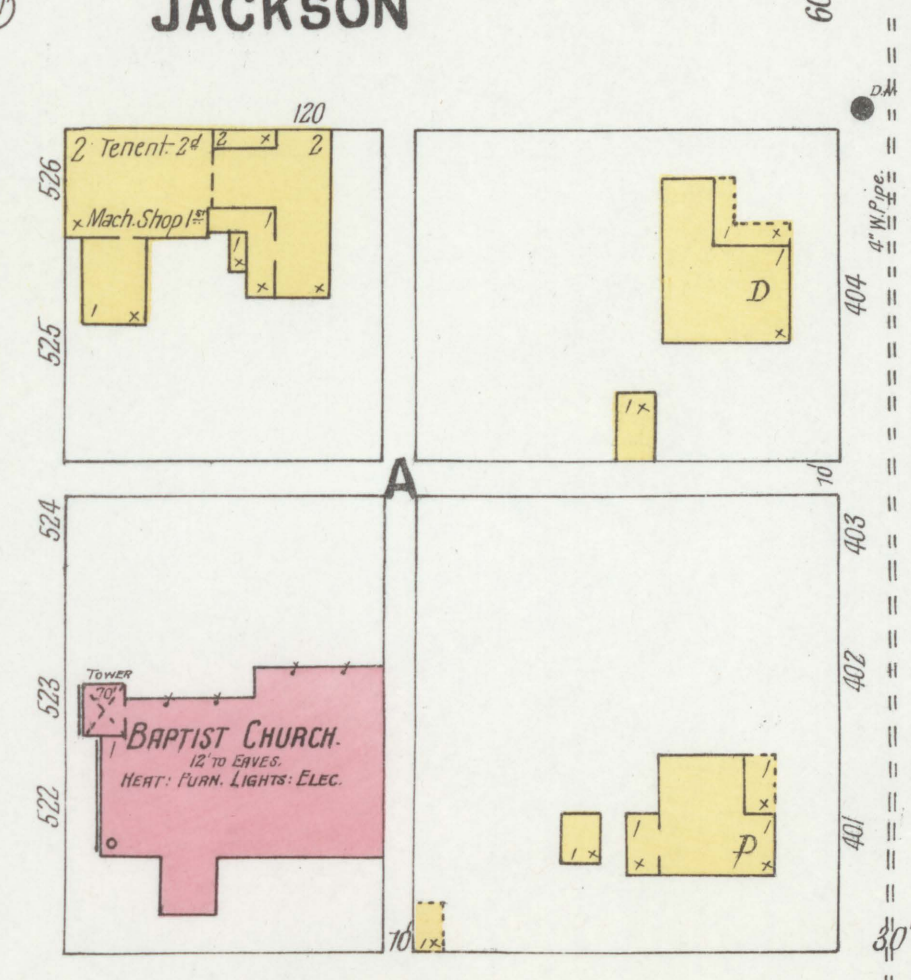
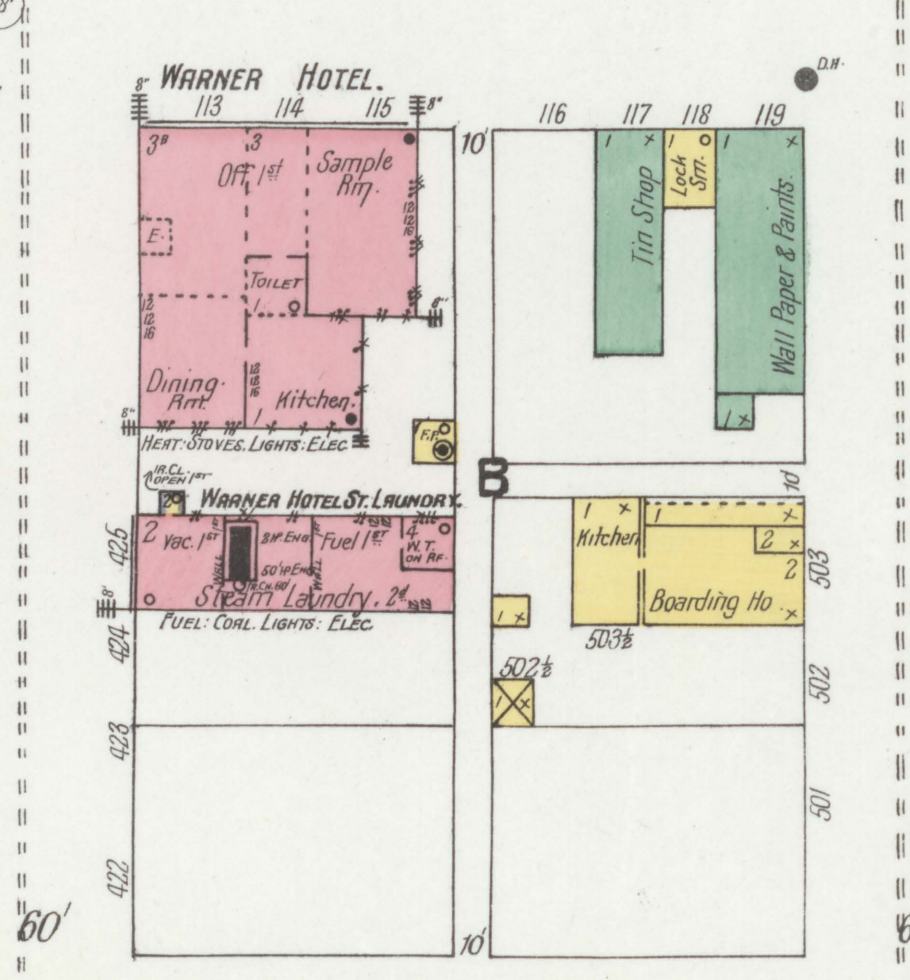
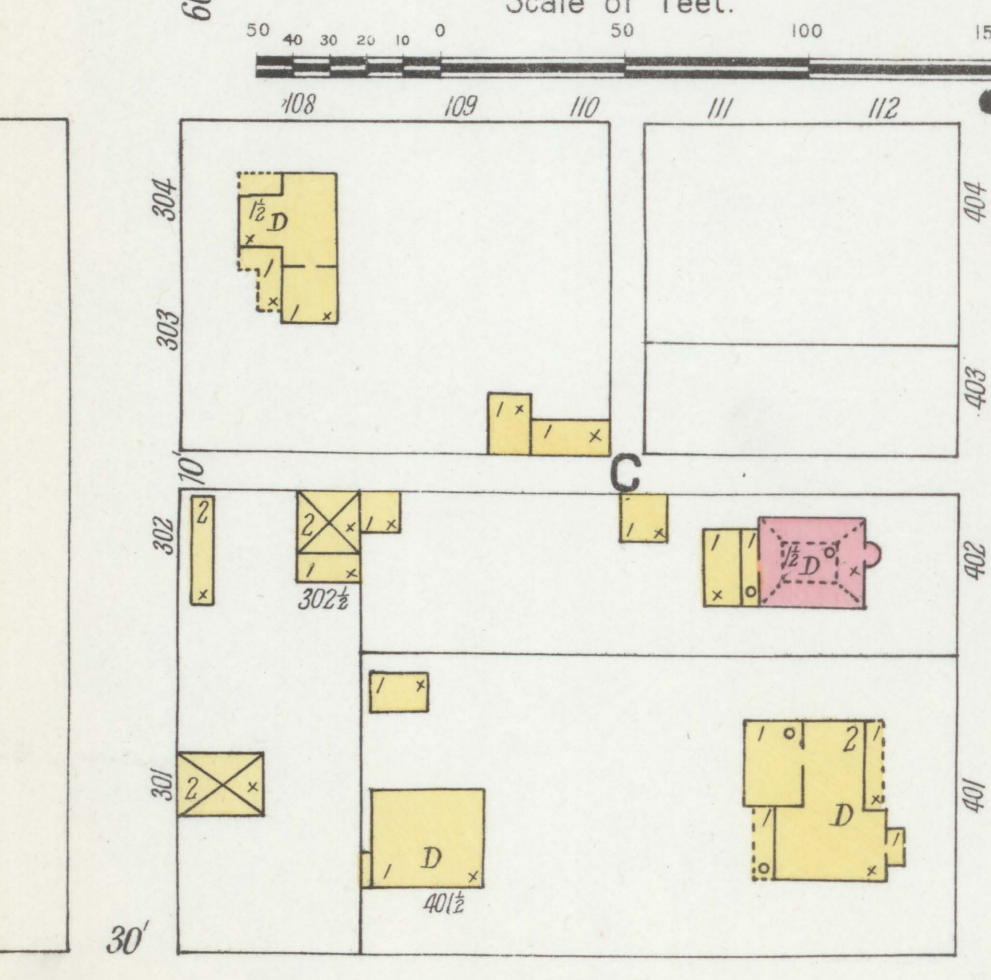
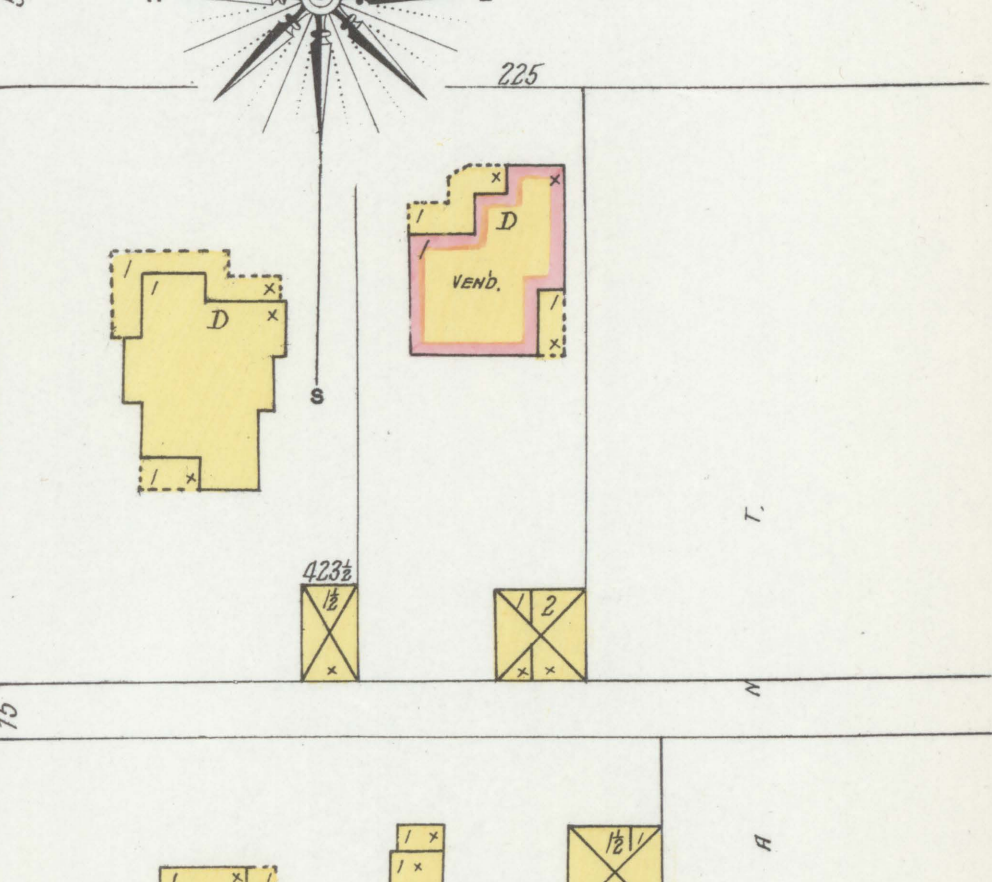
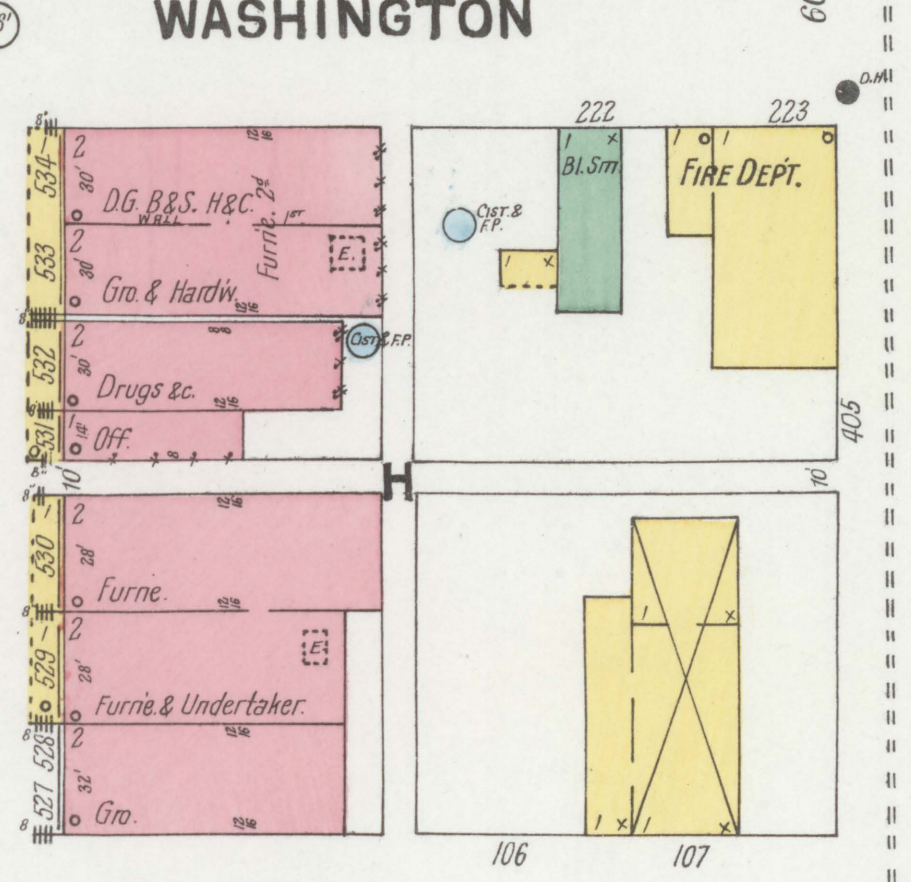
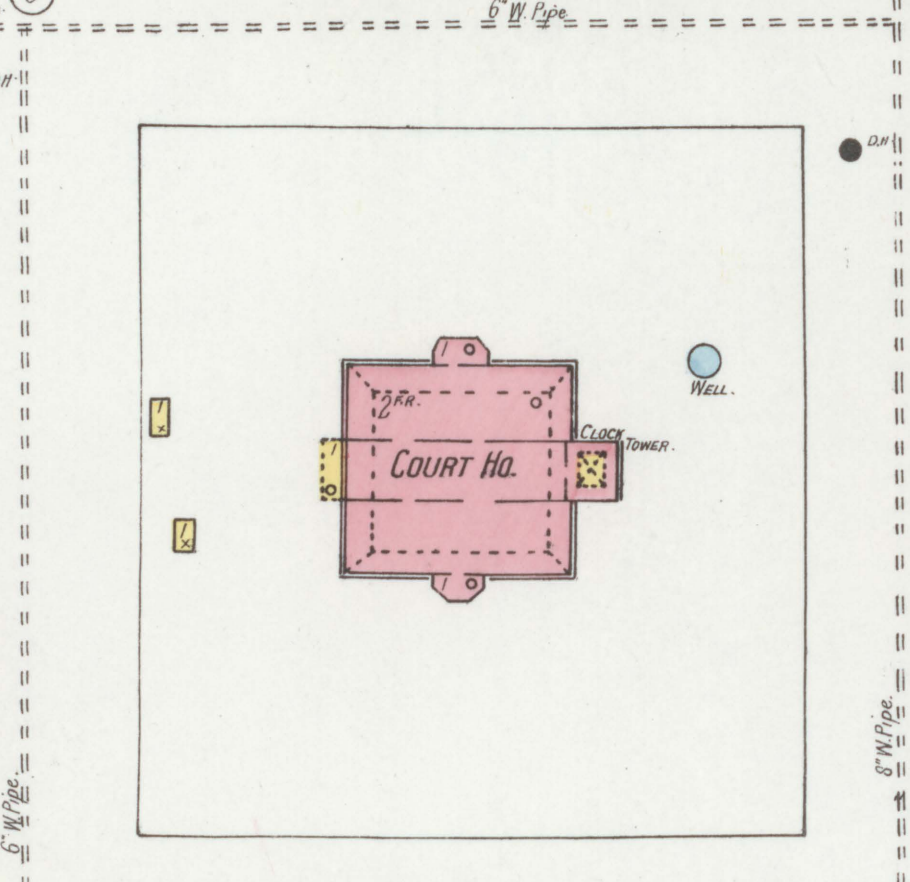
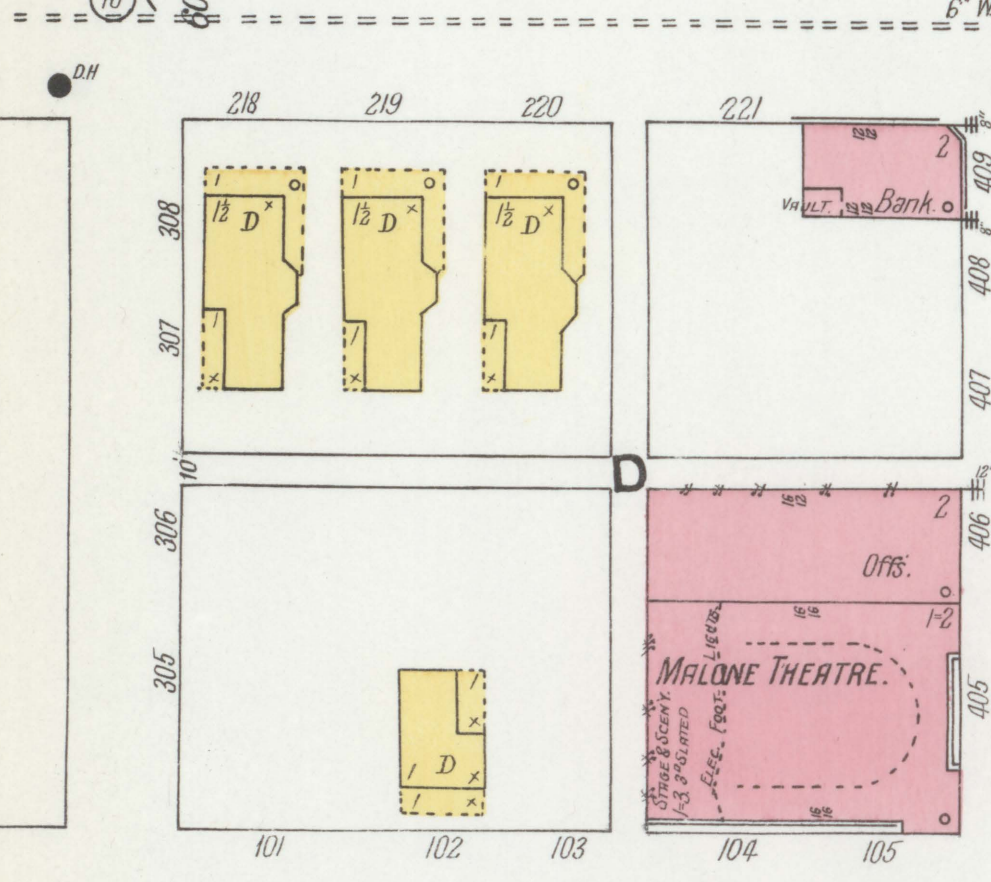
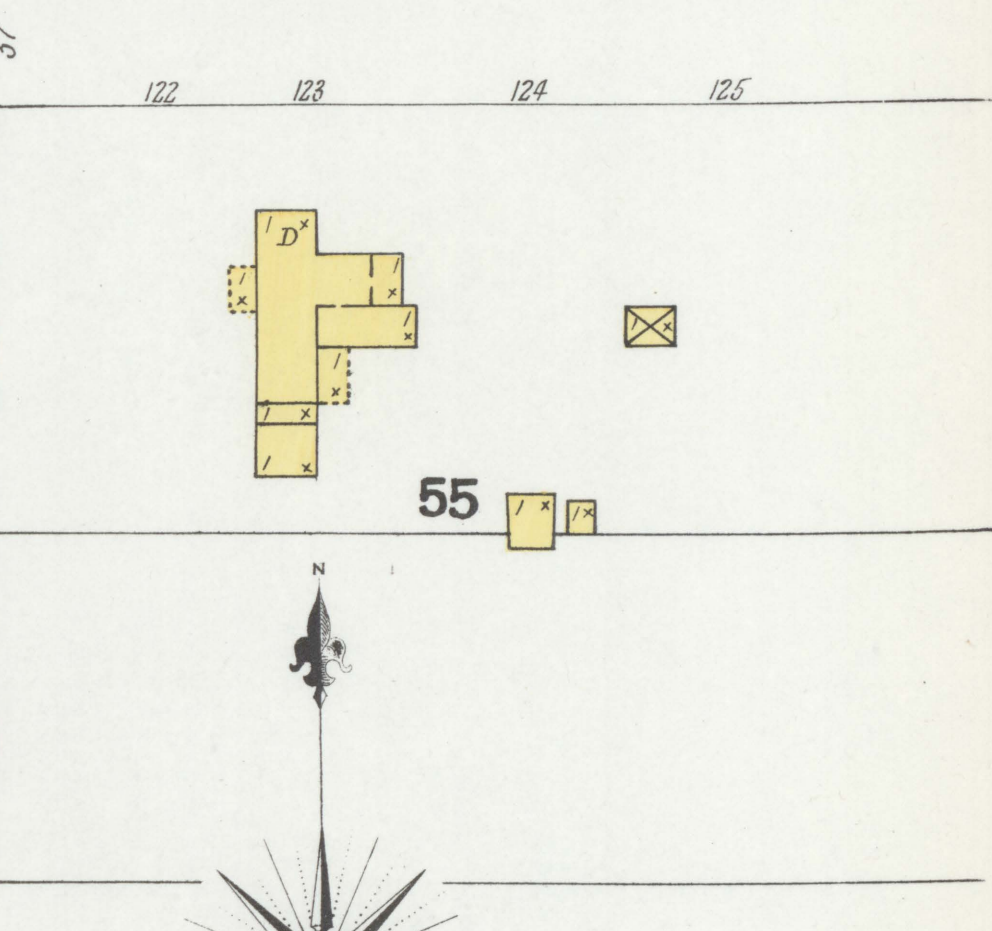
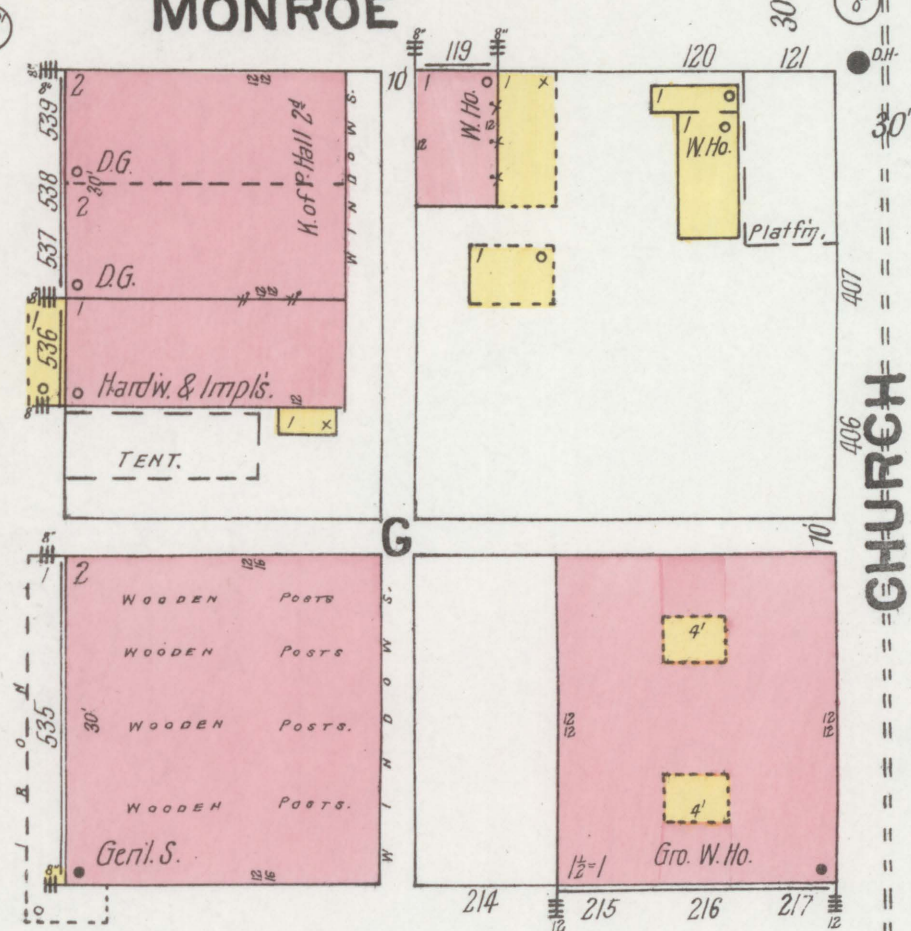
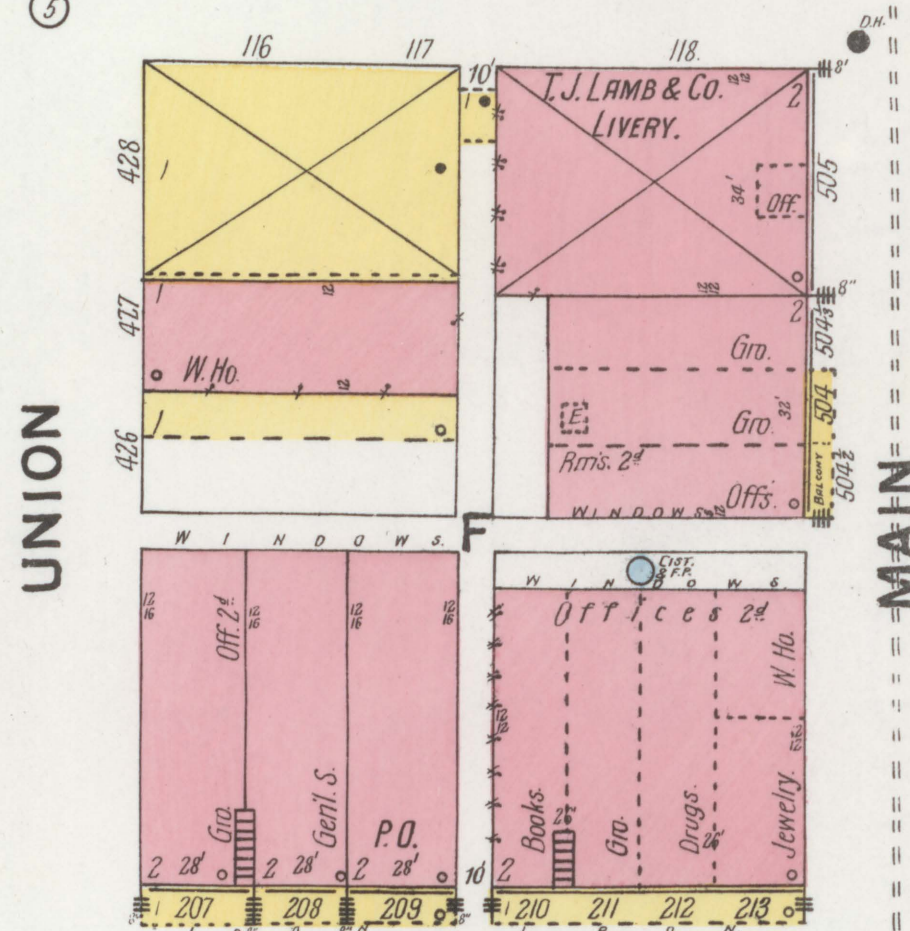
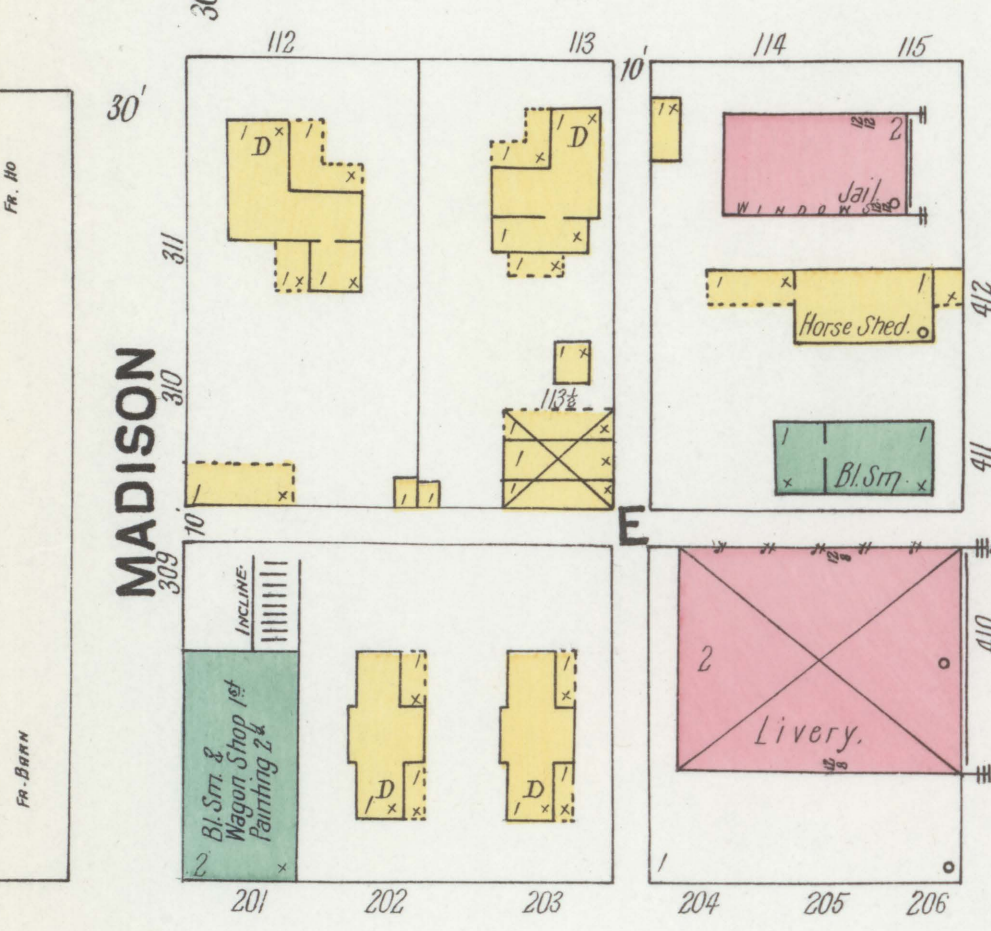
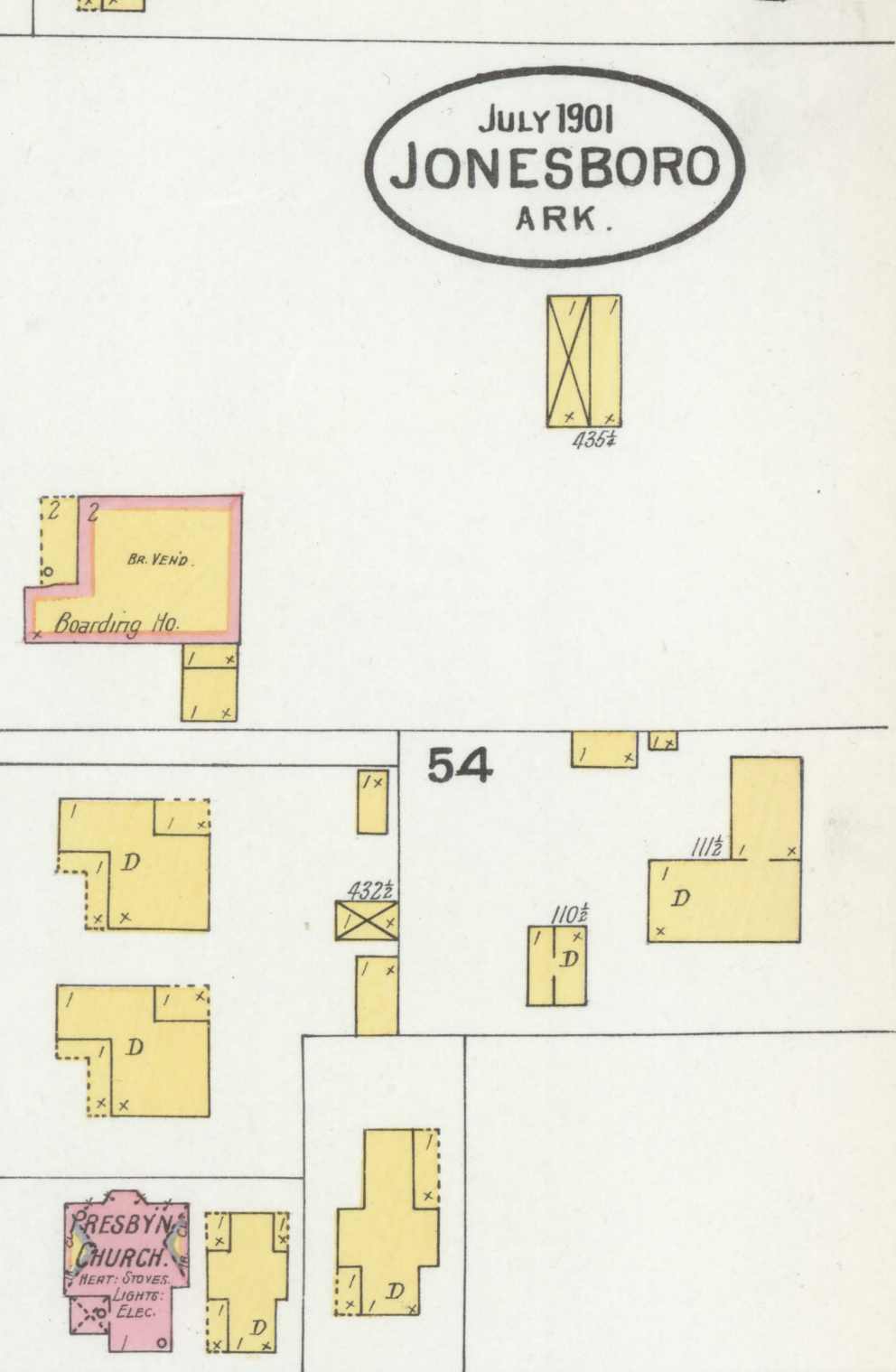
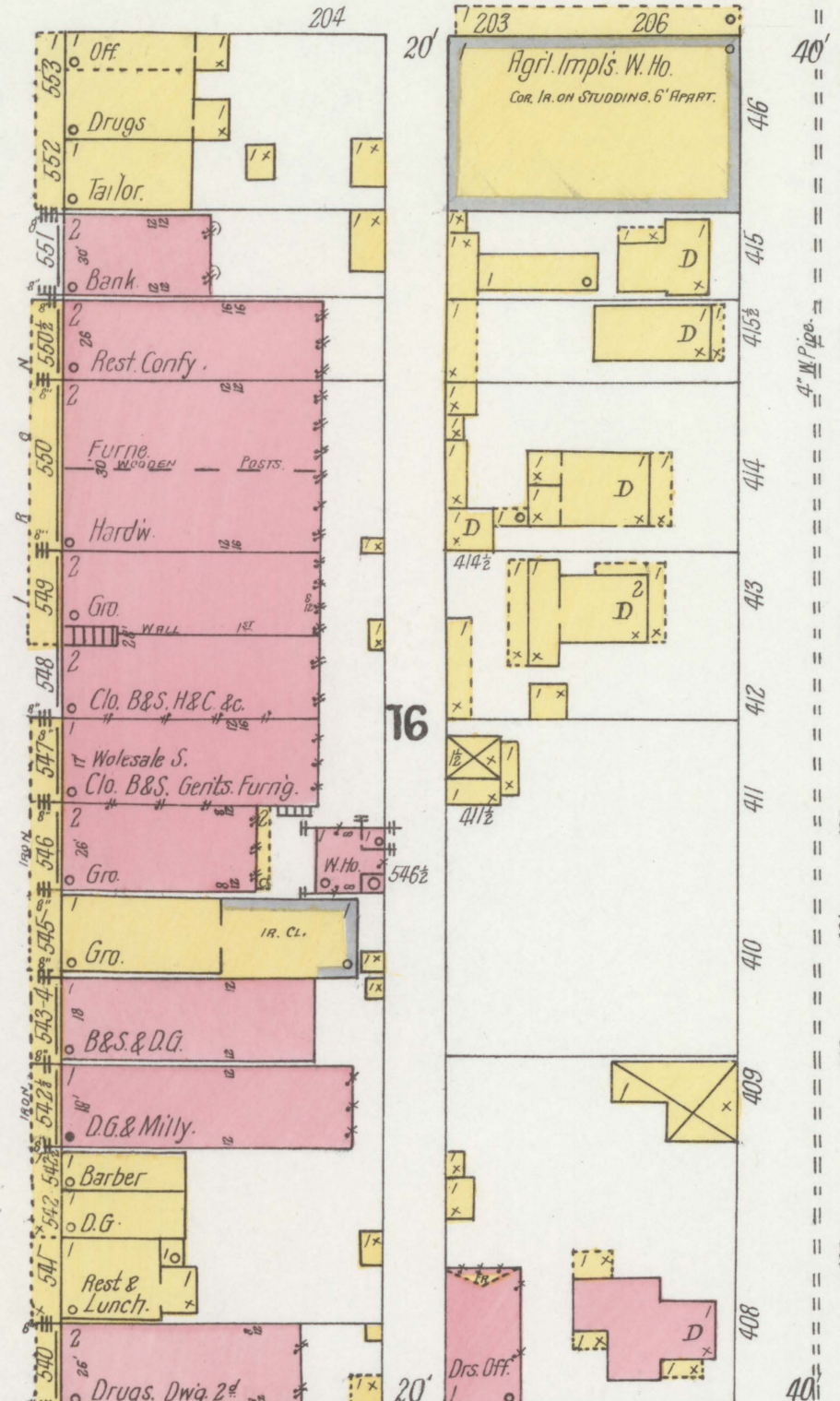
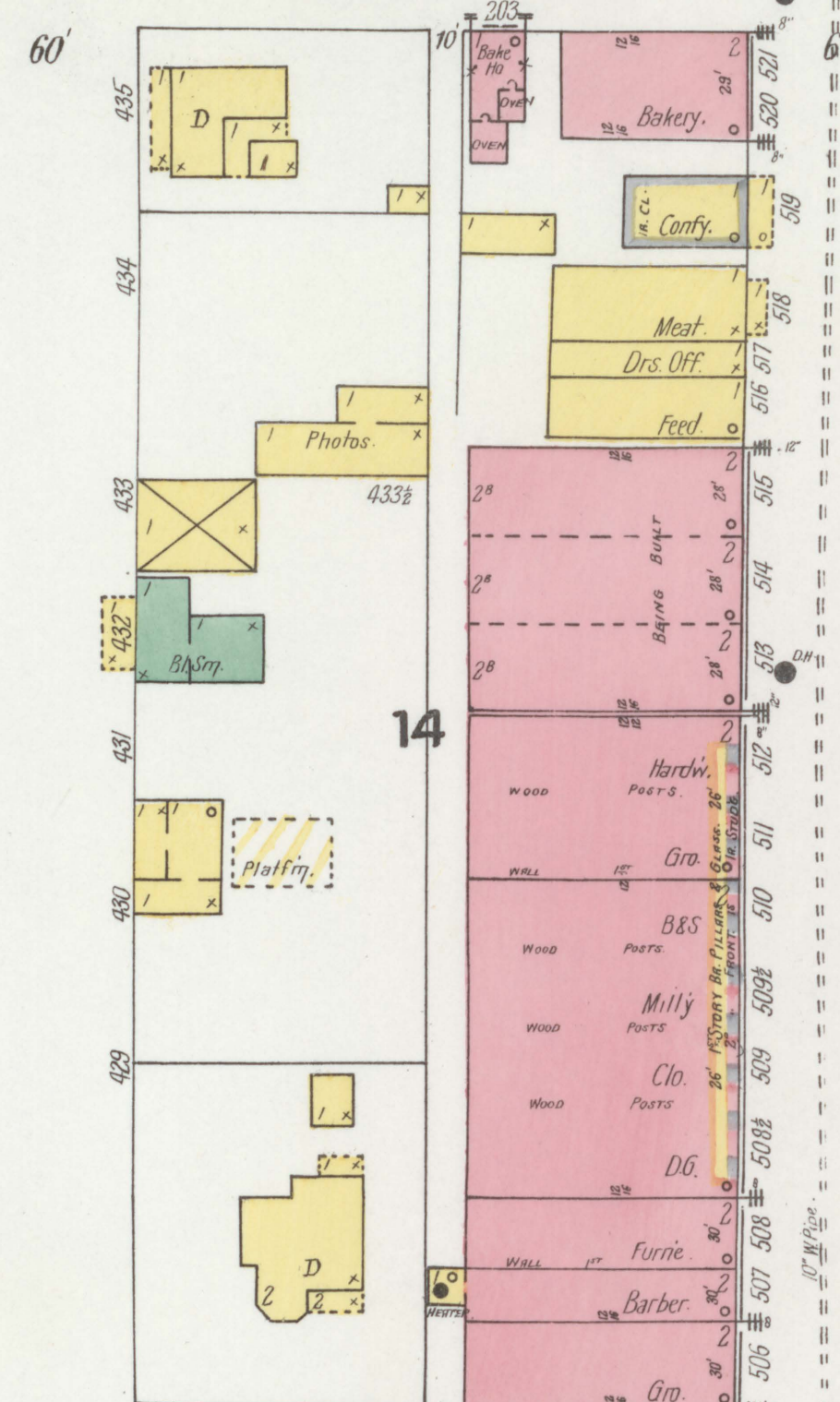
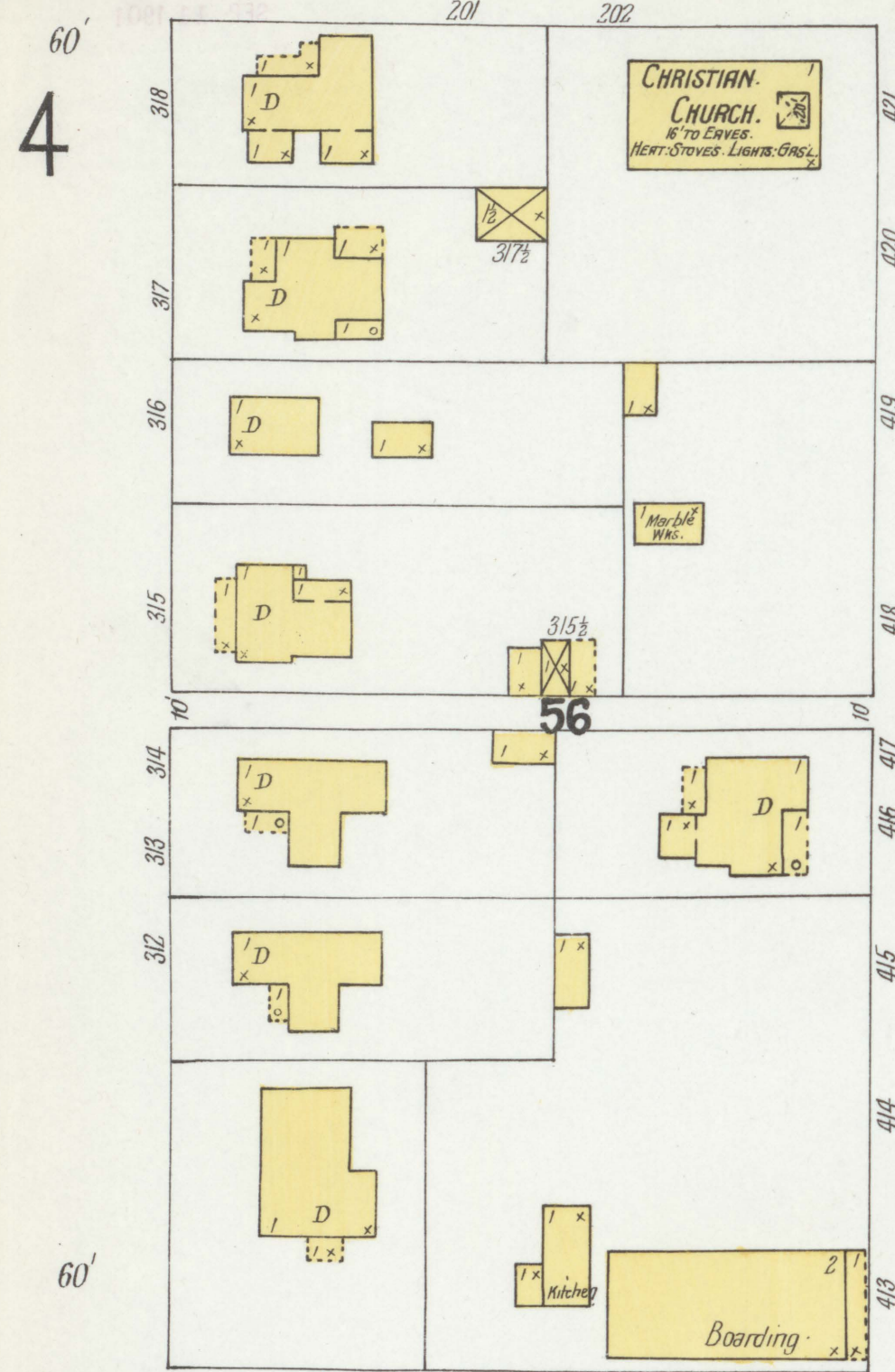


Scale of Feet. 0 50 100 150



HUNTINGTON AV.

JULY 1901
JONESBORO
ARK.



MADISON

UNION

MONROE

CHURCH

WASHINGTON

JACKSON

JEFFERSON

3

4

2

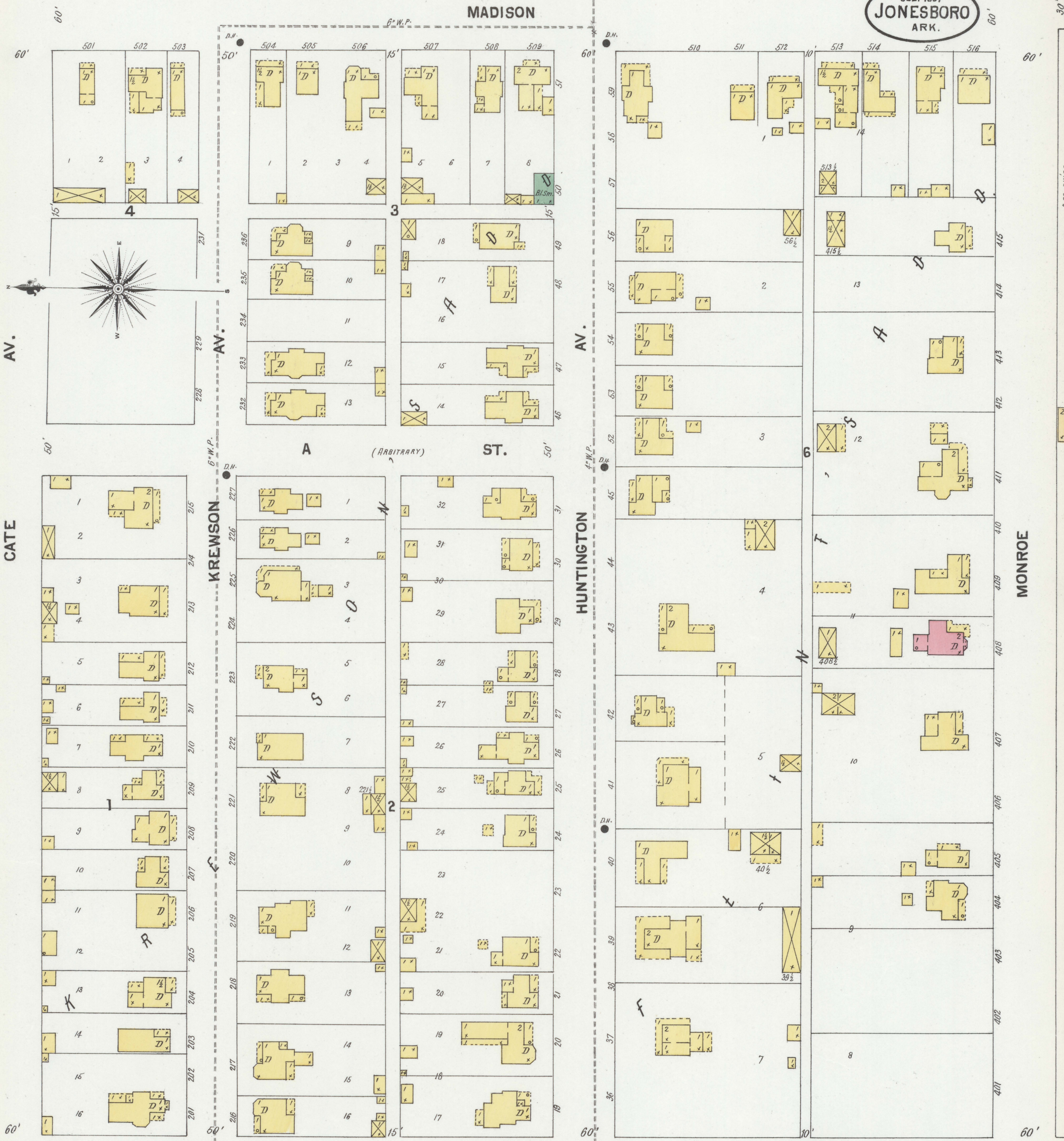
5

6

7

7

JULY 1901
JONESBORO
ARK.



AV.

CATE

KREWSON

HUNTINGTON

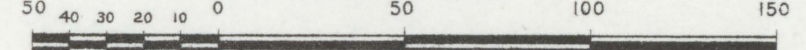
MONROE

MADISON

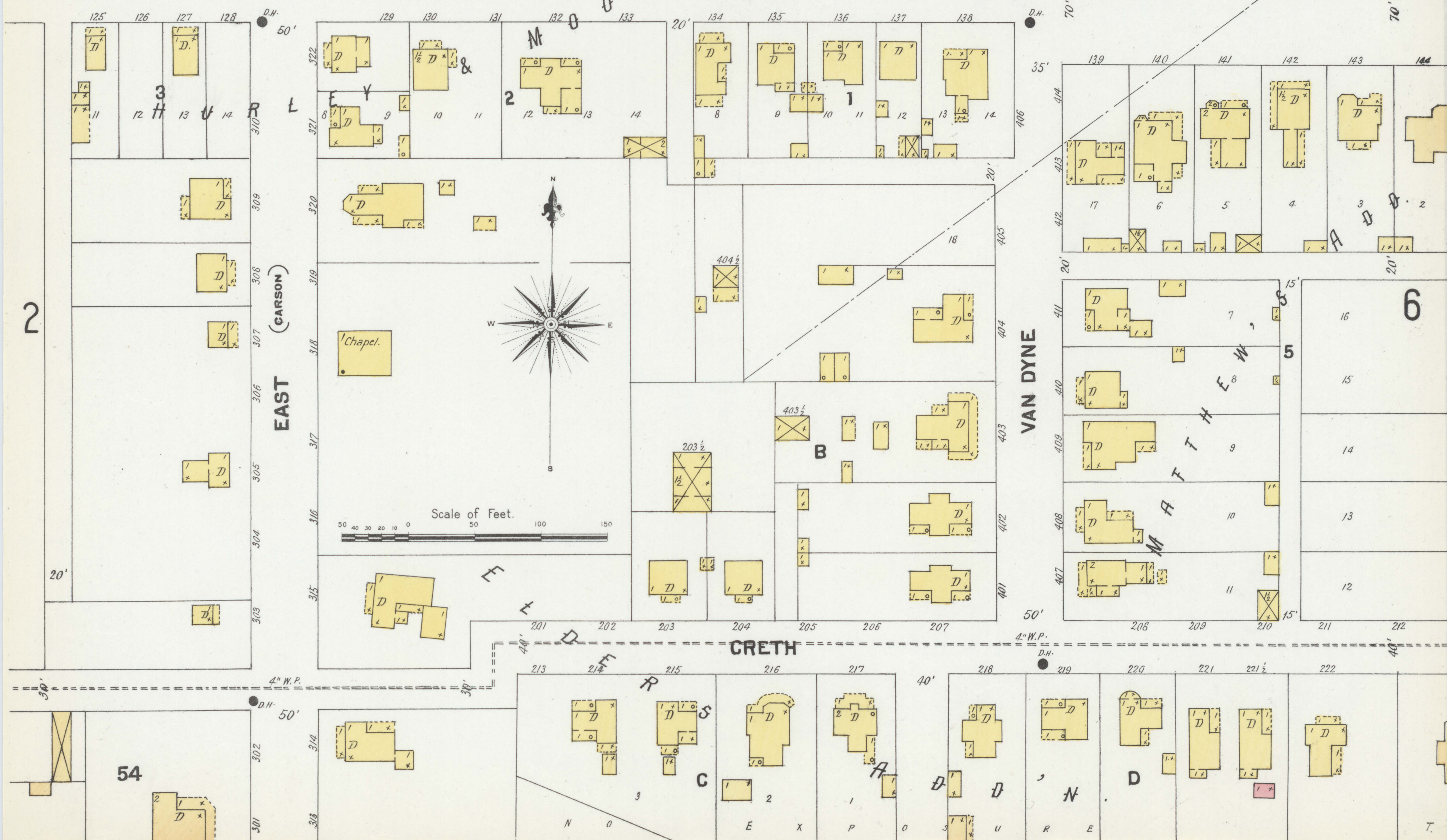
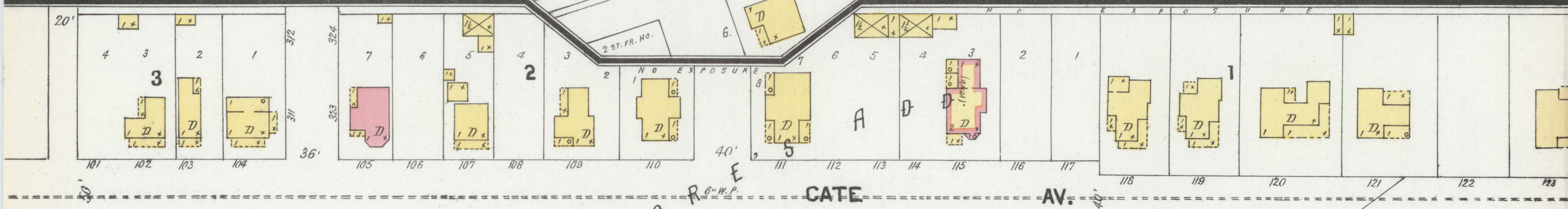
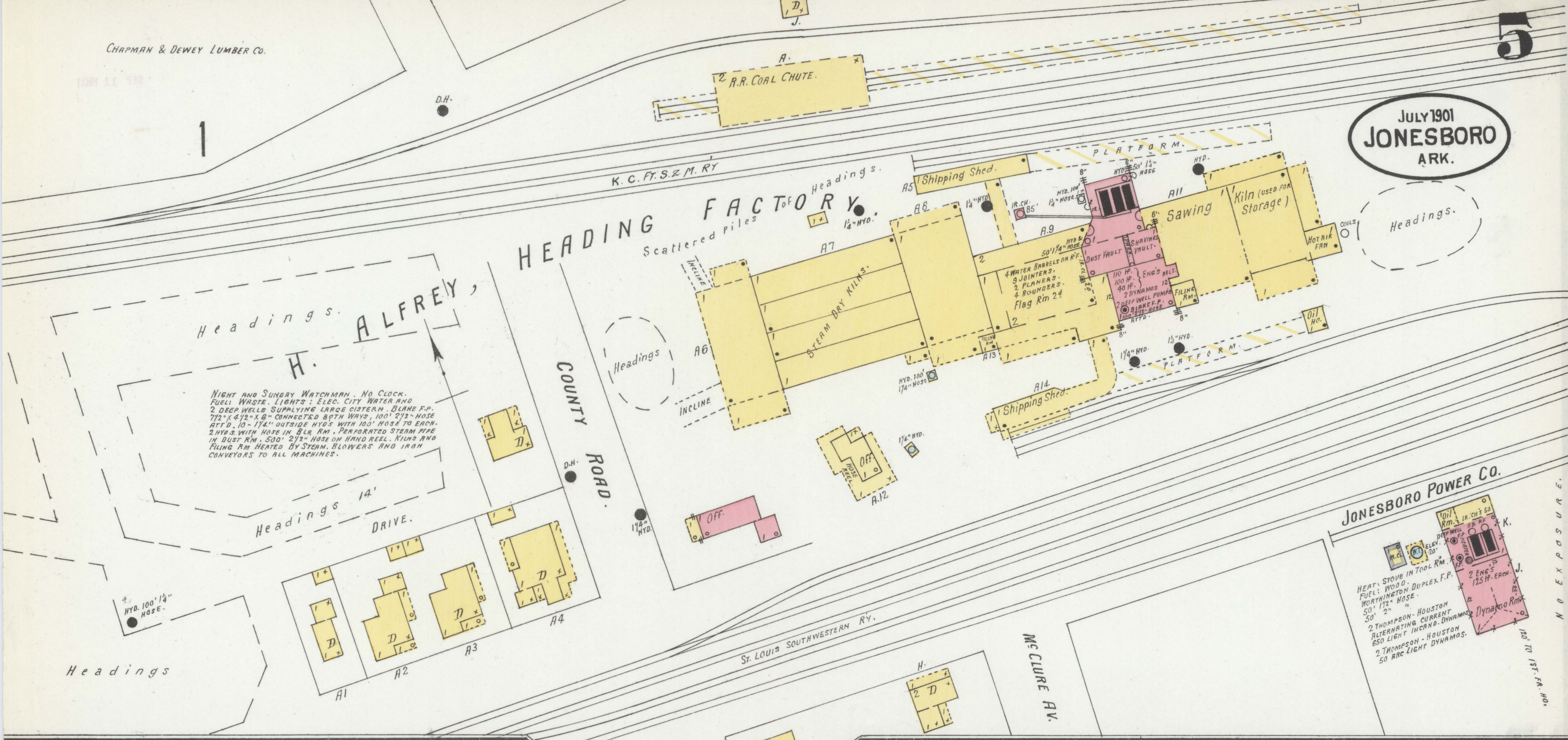
FLINT

AV.

Scale of Feet.

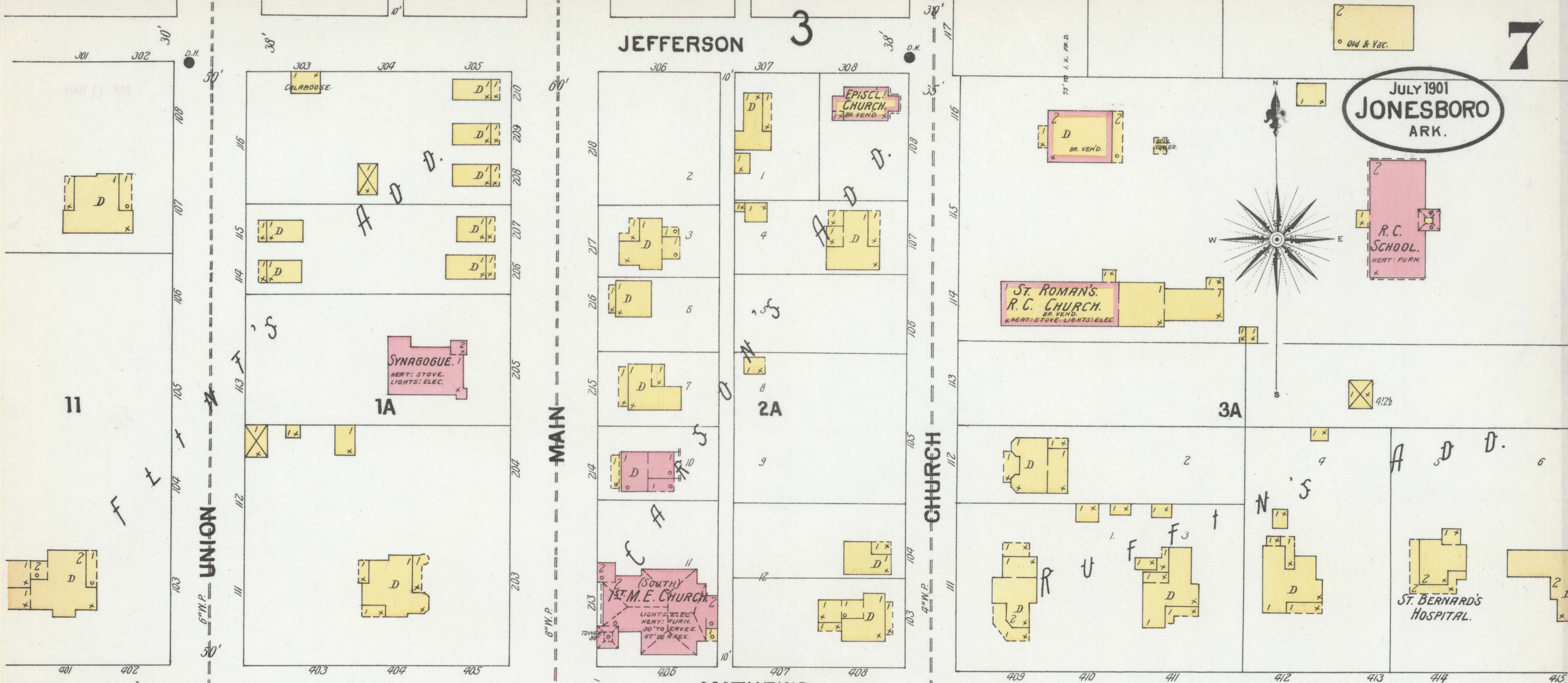


JULY 1901
JONESBORO
ARK.

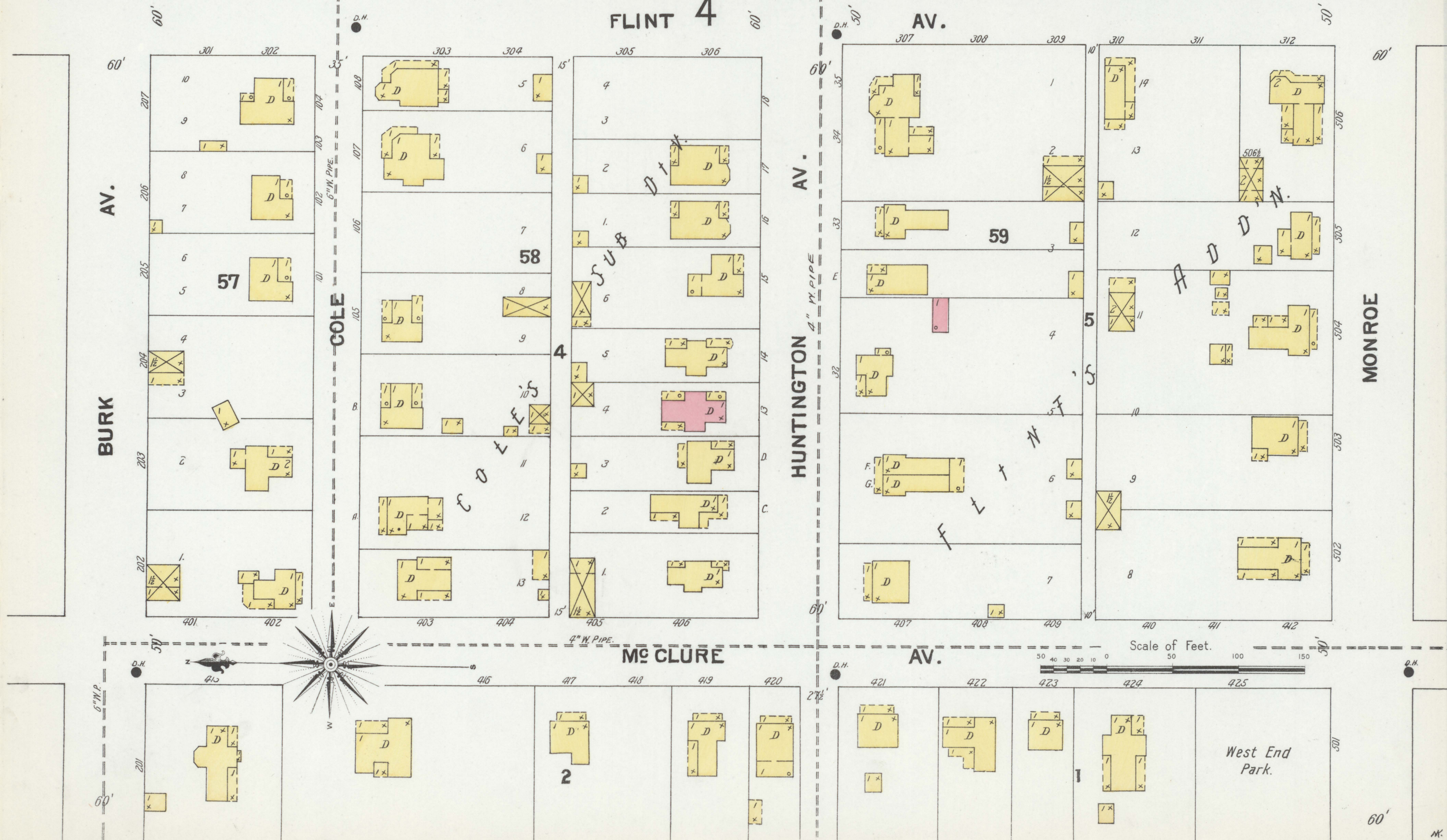


July 1901
JONESBORO
ARK.

JEFFERSON 3

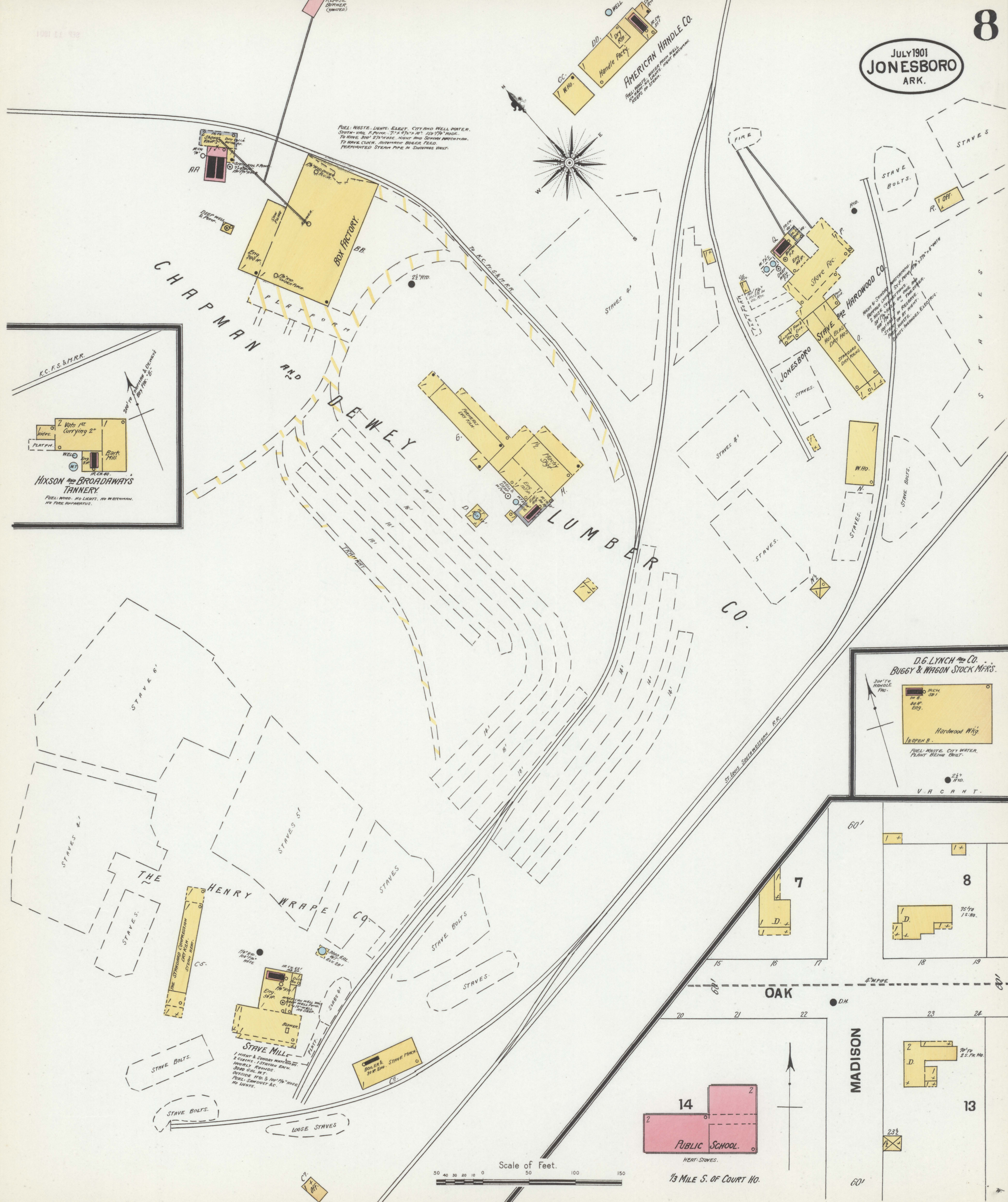


FLINT 4

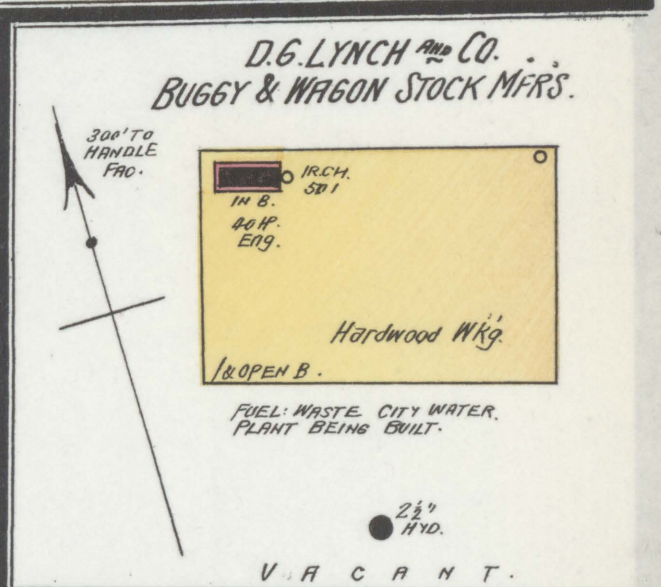
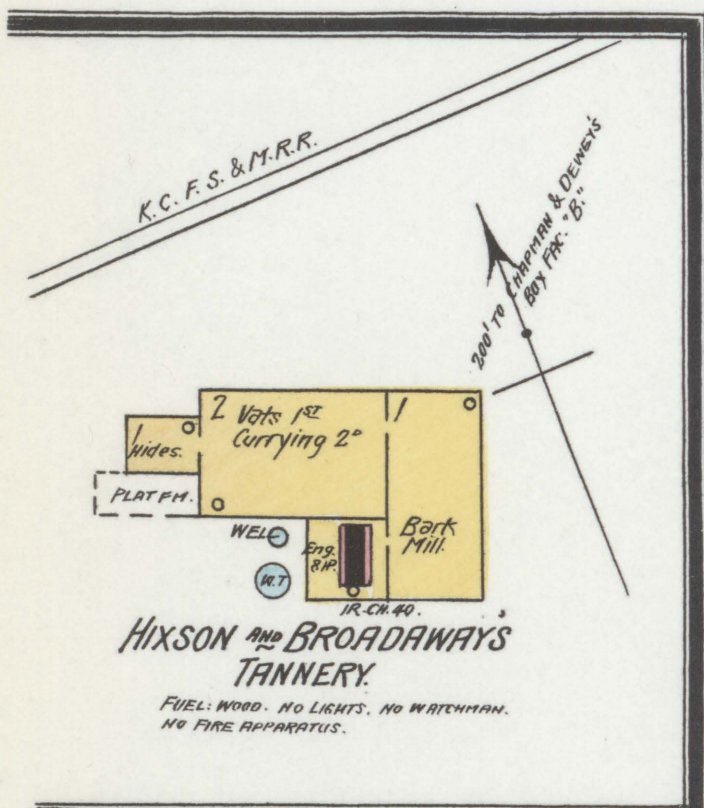


Scale of Feet. 0 50 100 150

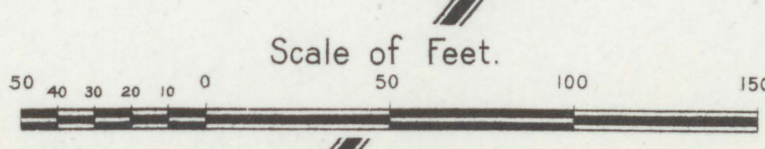
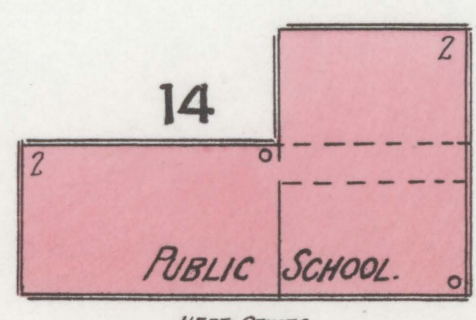
JULY 1901
JONESBORO
ARK.

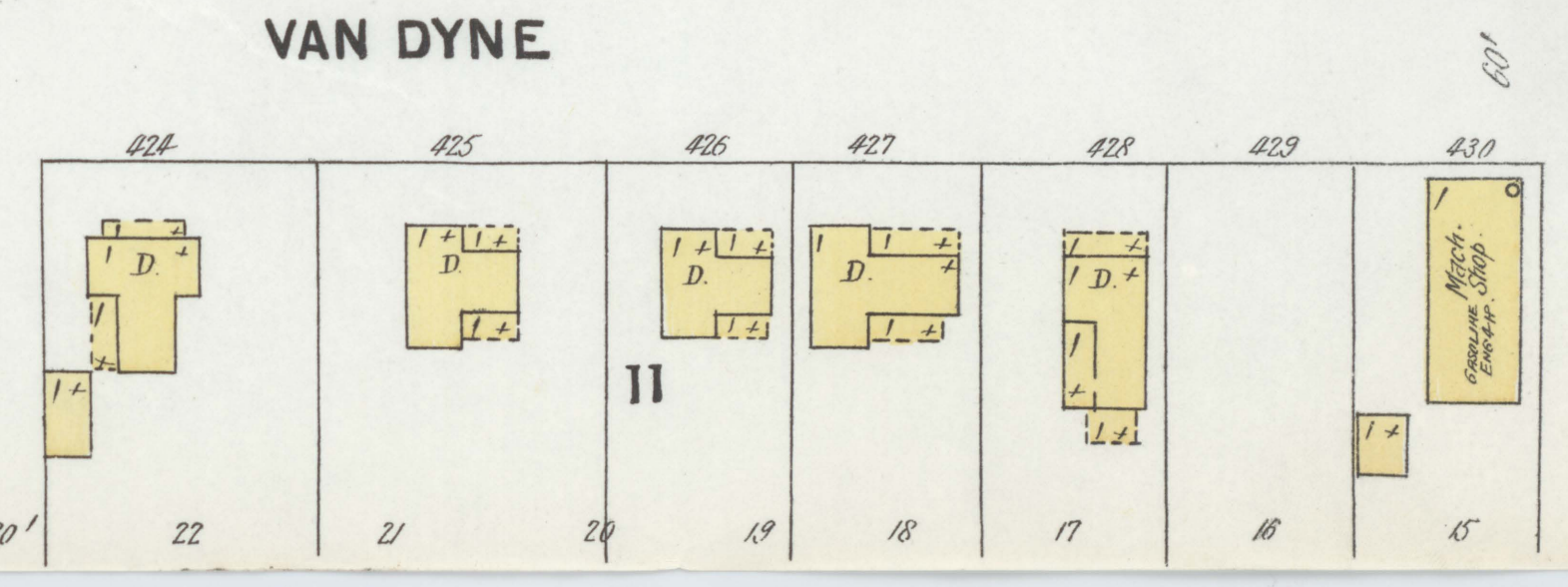
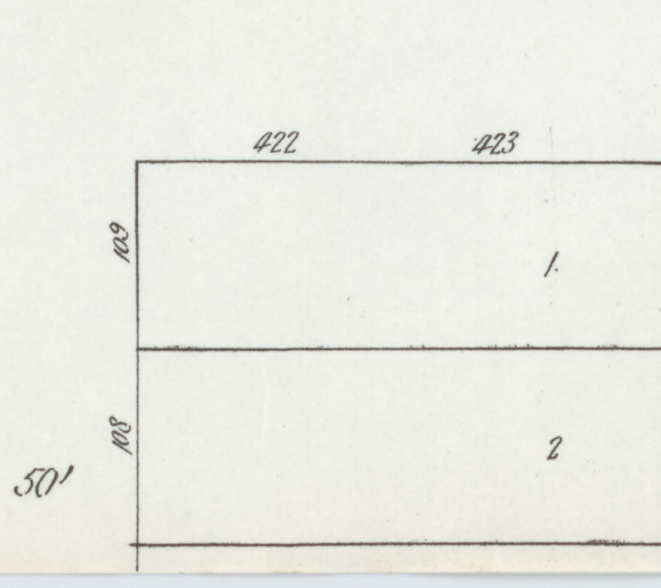
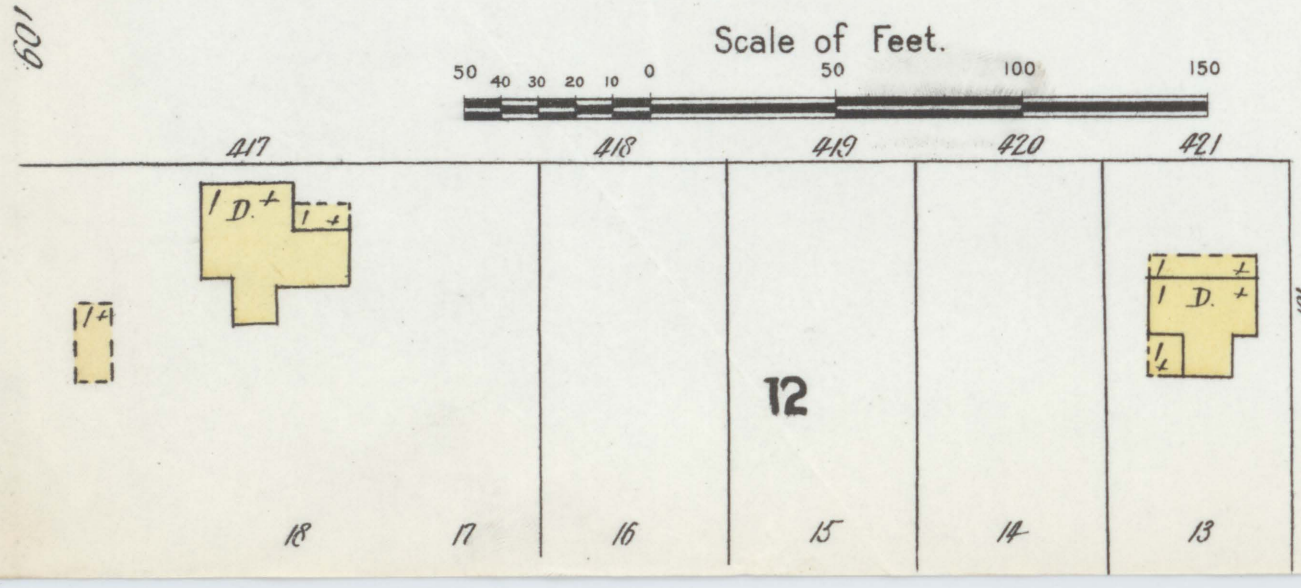
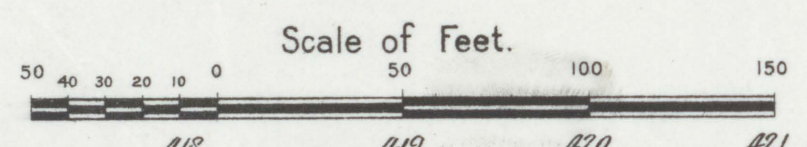
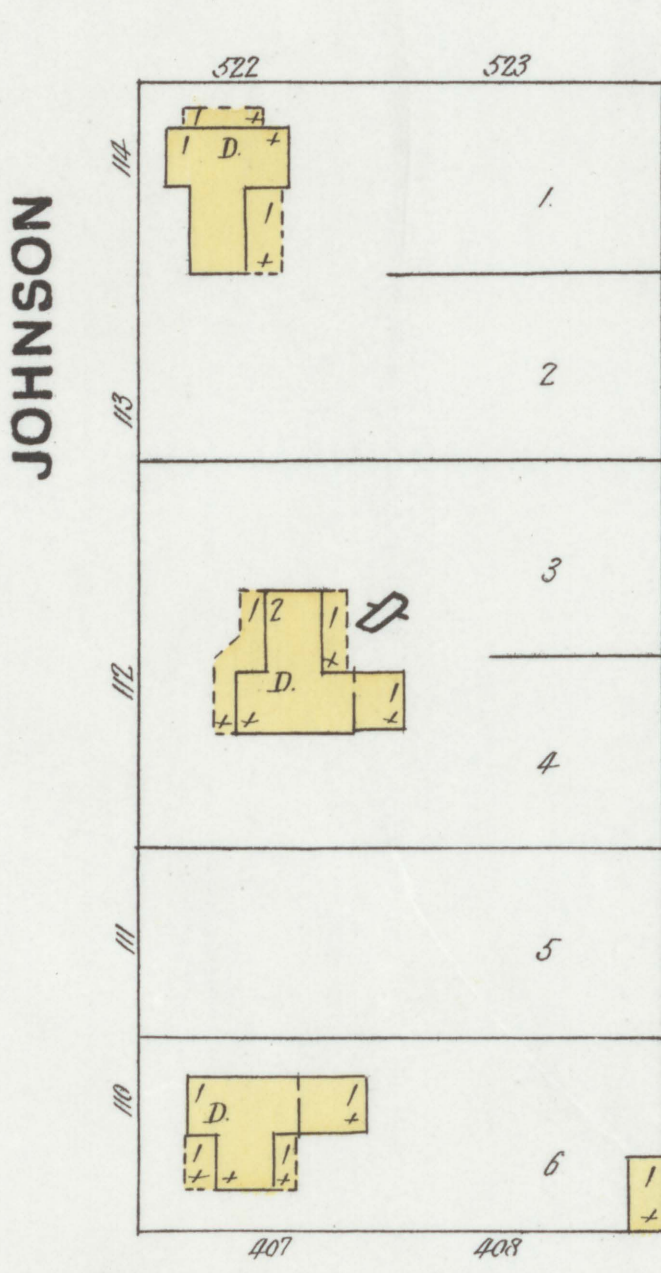
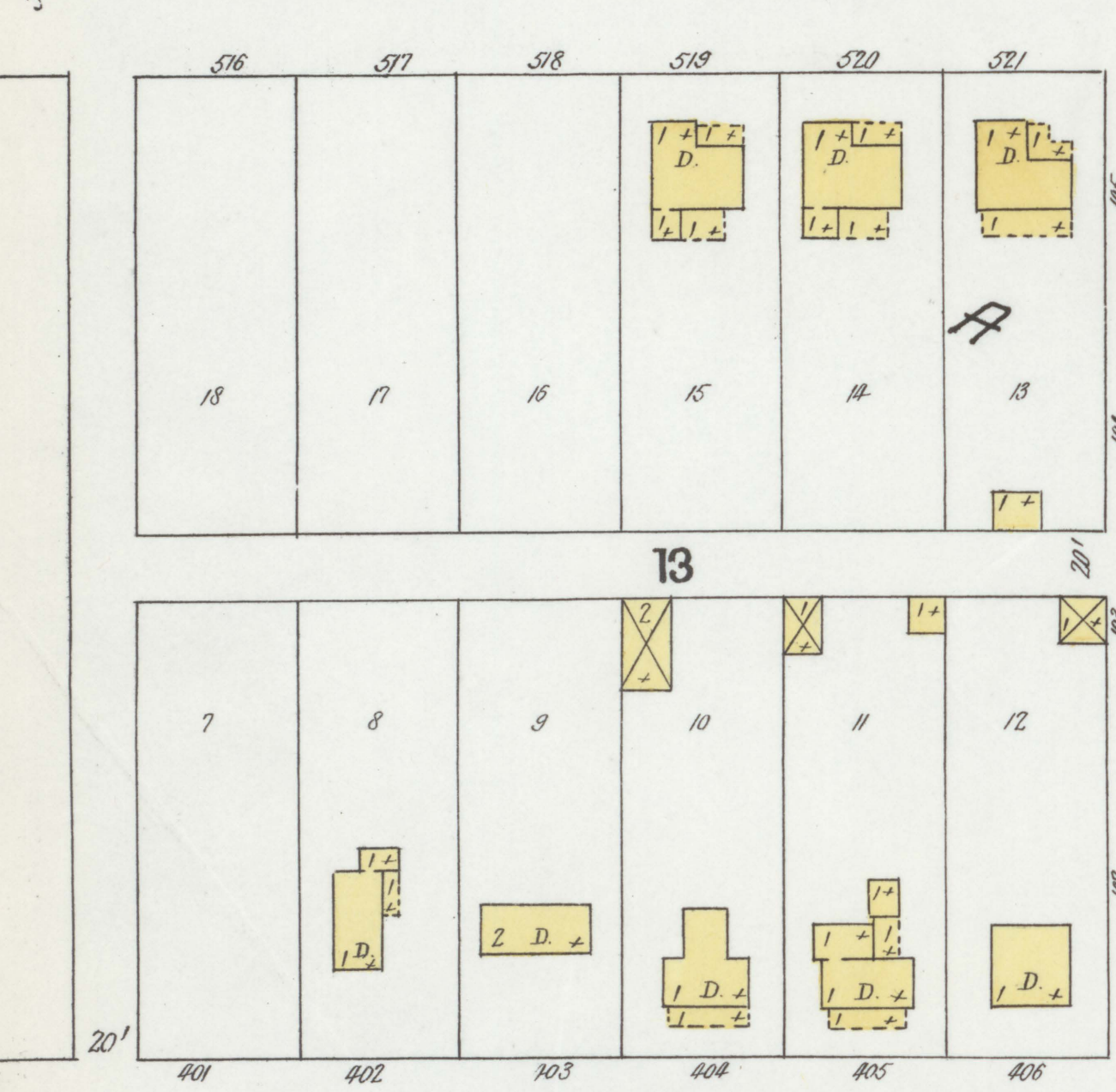
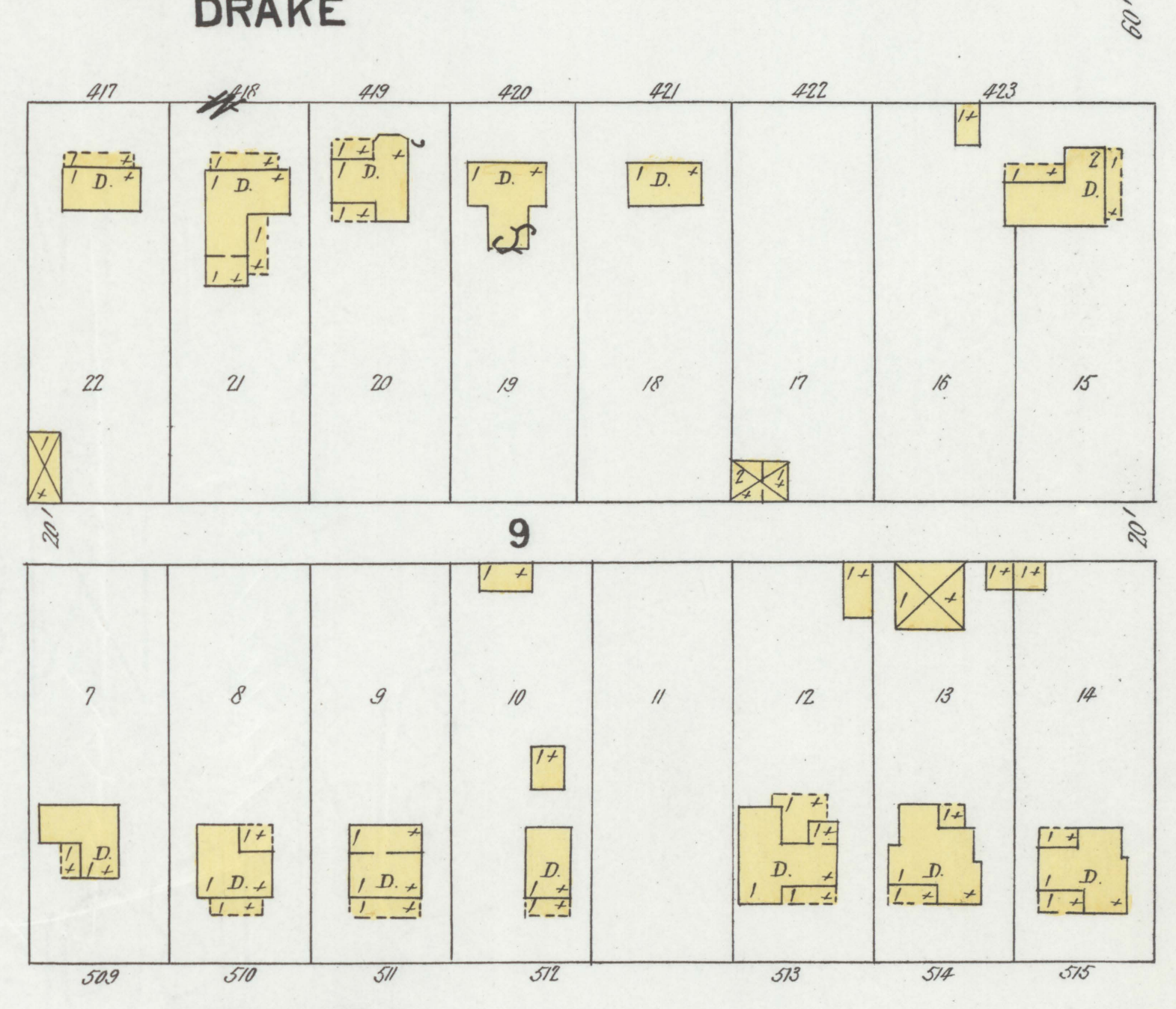
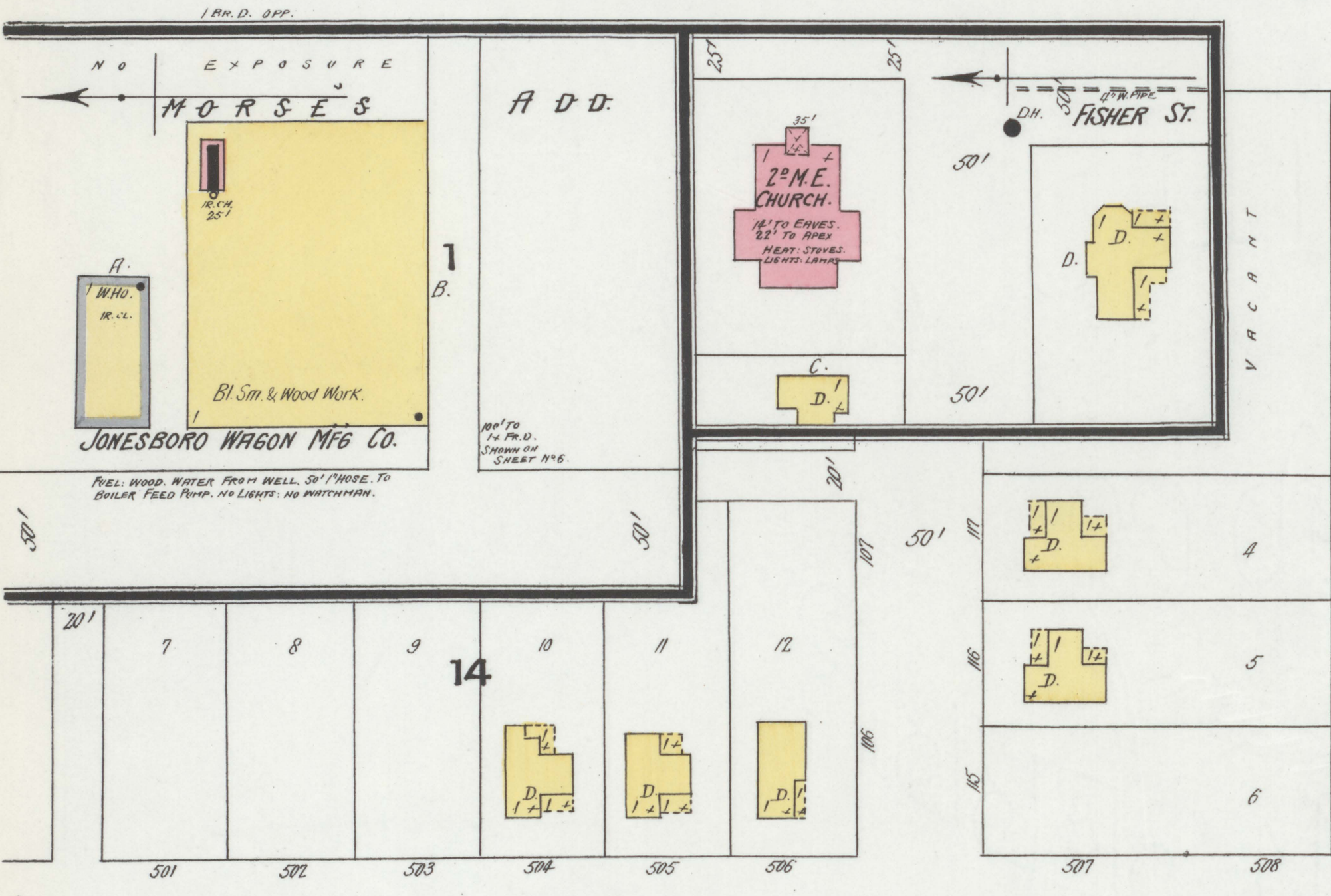
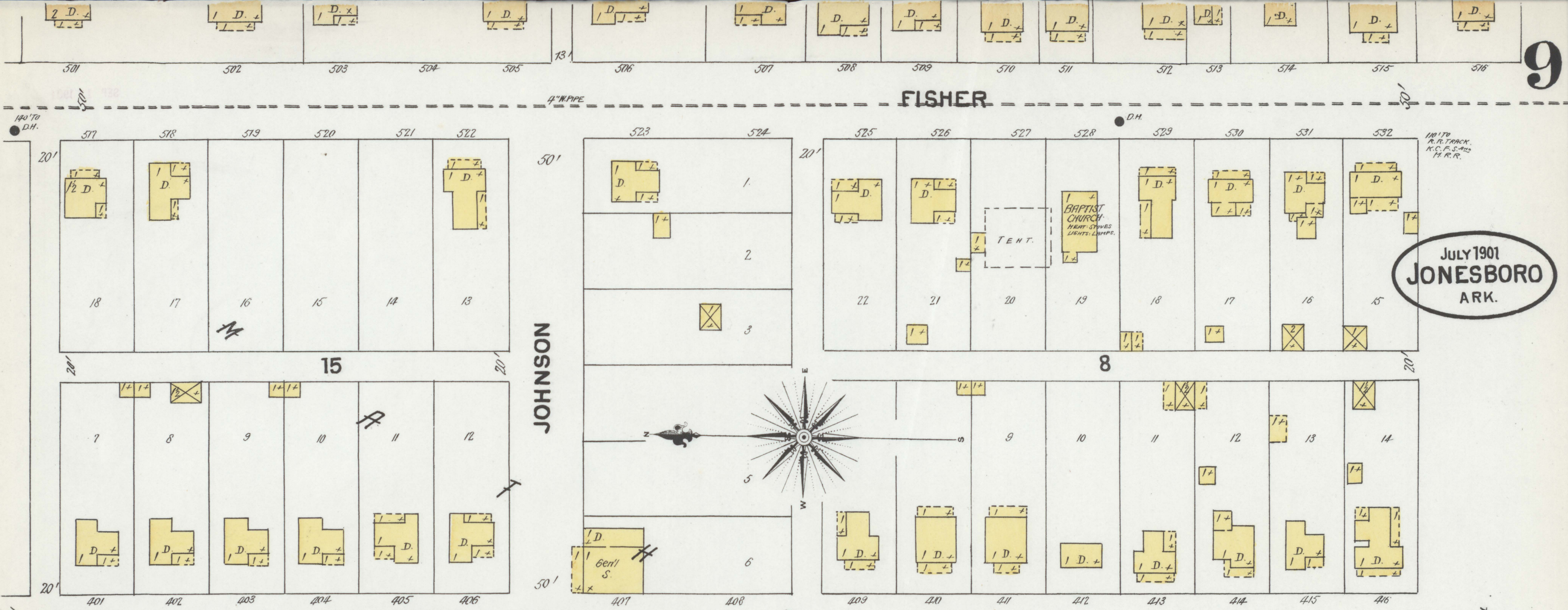


FUEL, WASTE, LIGHTS, ELECT., CITY AND WELL WATER.
 STEAM-VALV. R. PIPE. "12" X "12" X "10" 100' 150' HOSE.
 TO HAVE JOB 2 1/2 WAYS. NIGHT AND SUNDAY MATCHMAN.
 TO HAVE CLOCK. AUTOMATIC BOILER FEED.
 PERFORATED STEAM PIPE IN SWIMMING WELLS.



STAVE MILL
 1 HAND & SUNDAY MATCHMAN.
 2 CLOCKS. 1 STATION BOY.
 HANDLY. BOILER.
 3000 GAL. INT.
 OVERSIC. 1/2" X 1/2" HOSE
 PUBL. S.W. 1/2" HOSE
 NO LIGHTS.





RATTL ROAD RESERVATION

JONESBORO ARK. JULY 1901

CRISON CARBONATING CO.