



# INDEX.

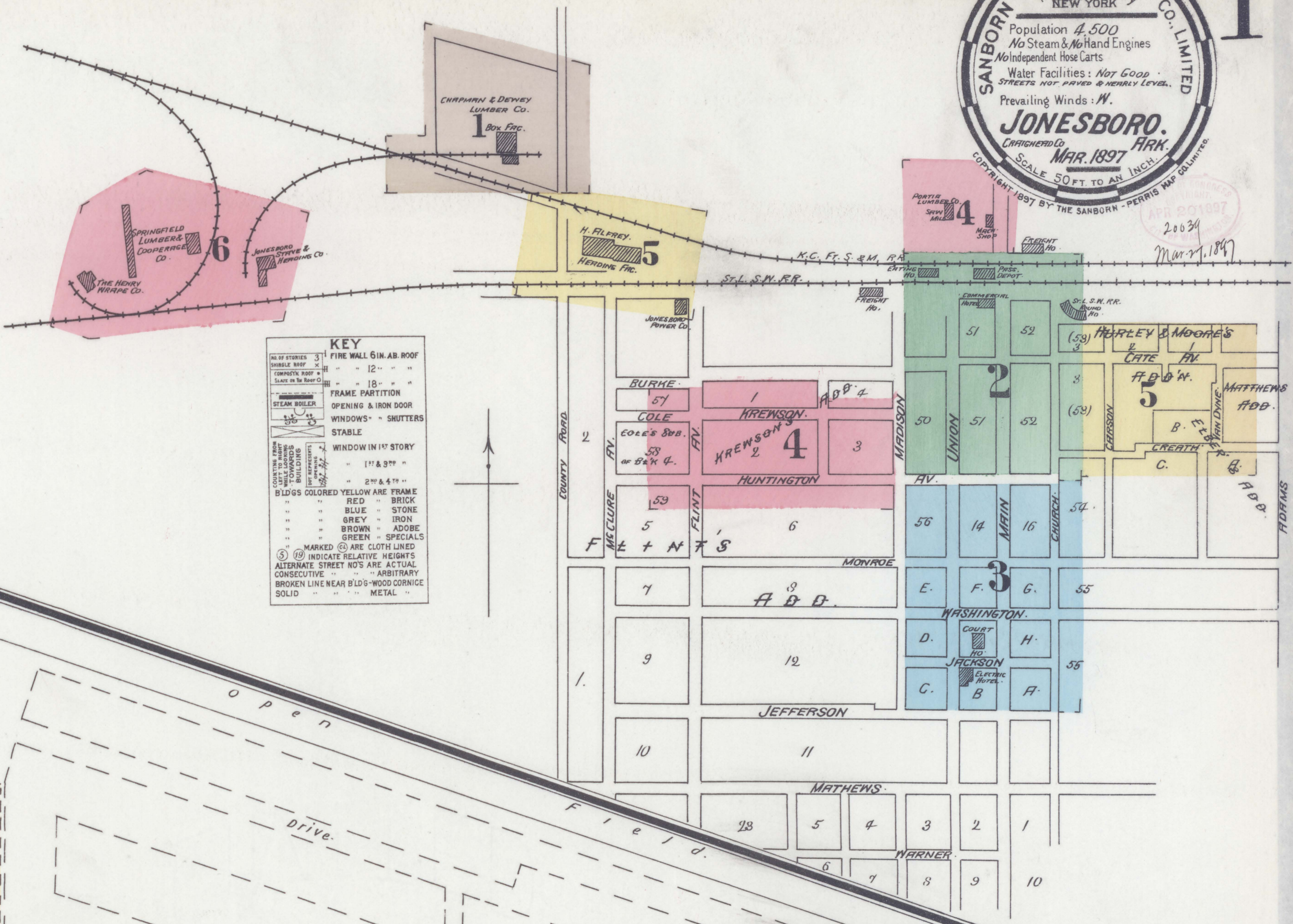
**STREETS.**

A St.	A	4
Burke Ave.	B	4
Cate Ave.	C	5
Carson	301-324	5
Church	401-438	3
Cole	401-432	2
Creath	101-108	4
Flint Ave.	F	4
Huntington Av., N. Side, Mad'n to Church	2	
" " " " " " " "	13-50	4
Jackson	101-120	3
Jefferson		3
Krowson Ave.	201-226	4
Madison	301-318	3
" " " " " " " "	401-412	2
" " " " " " " "	Huntington to Krowson	4
" " " " " " " "	near Oak	6
Main	501-553	3
Monroe	601-671	3
Oak		6
Union	401-435	3
" " " " " " " "	501-533	2
Van Dyne	401-414	5
Washington	201-223	3

**SPECIALS.**

Alfrey, H., Heading Factory	5
American Hotel	2
Arlington	2
Baptist Church	3
Barton, P. C., Planing Mill	2
Bohlen-Huse Ice Factory	2
Central Hotel	2
Chapman & Dewey Lumber Co.	1
Christian Church	3
Commercial Hotel	3
County Court House	3
Electric Hotel	3
Jonesboro Academy	6
" " Machine Works	3
" " Power Co.	4
" " Roller Mill Co.	2
" " Stave & Hardwood Co.	6
K. C. F. S. & M. R. R. Coal Elevator	5
" " " " " " " " Depot	2
McHose & Brodway, Foundry	4
Malone Theatre	3
New Richmond Hotel	2
Portia Lumber Co.	4
Presbyterian Church	3
Public School	6
Railroad Hotel	2
St. Louis Hotel	2
St. L. & S. W. R. R. Depot & Round Ho.	2
Springfield Lumber & Coopers Co.	2
Stuck, C. A., & Sons, Planing Mill	2
Tremont Hotel	2
Wrape, H., Co., Stair Mill	6

NOTE.—House Numbers given are ARBITRARY.



**KEY**

ALL OF STUDIES 3" FIRE WALL 6 IN. AB. ROOF

CONCRETE ROOF 12" " "

SLATE ON THE ROOF 18" " "

FRAME PARTITION

OPENING & IRON DOOR

WINDOWS - SHUTTERS

STABLE

WINDOW IN 1ST STORY

17' & 37'

2" & 4"

BLD'G COLORED YELLOW ARE FRAME

RED " BRICK

BLUE " STONE

GREY " IRON

BROWN " ADOBE

GREEN " SPECIALS

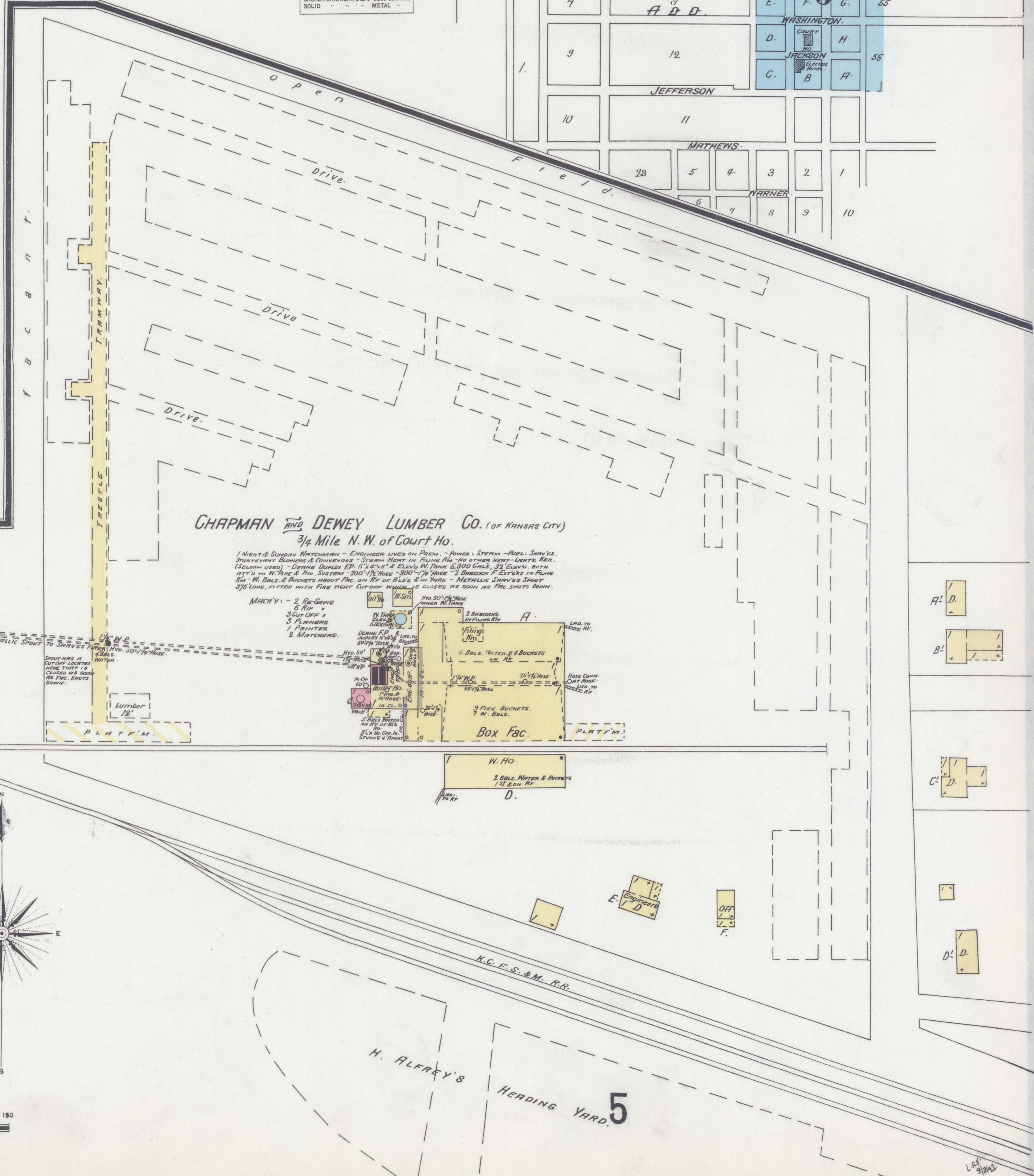
MARKED (C) ARE CLOTH LINED

(S) (B) INDICATE RELATIVE HEIGHTS

ALTERNATE STREET NOS ARE ACTUAL CONSECUTIVE

BROKEN LINE NEAR BLD'G - WOOD CORNICE

SOLID " " " METAL



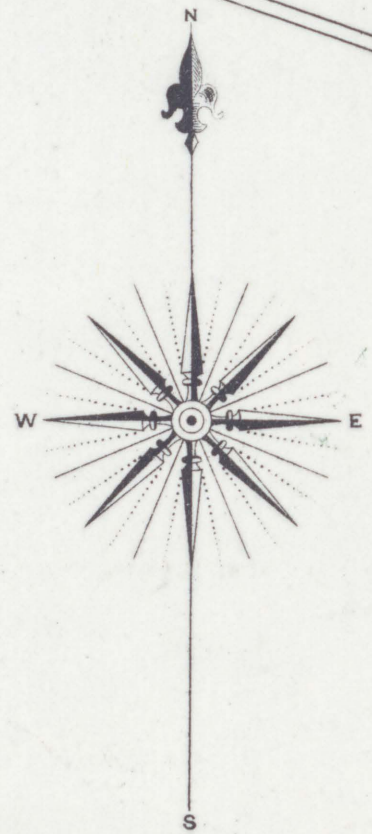
**CHAPMAN AND DEWEY LUMBER CO. (OF KANSAS CITY)**  
 3/4 Mile N. W. of Court Ho.

1 NIGHT & SUNDAY WATCHMAN - ENGINEER LIVES ON PREM. - POWER, STEAM - FUEL, SHAVES, SHUTTERING, BLANKING & CONVEYERS - STEAM HEAT IN FILING HO. - NO OTHER HEAT - LIGHTS, AIR, (EXHAUST USED) - CLOSING DUNGEON 20' x 27' & 47' x 47' & ELEV'S IN TANK & 300 GALS. 33' ELEV'S. WITH 17' x 17' N. TANK & HO. SYSTEM - 200' - 1/2" HOSE - 300' - 1/2" HOSE - 2 BARBOCK F. EXT'NS IN FILM HO. - 11 BALS. & BUCKETS ABOUT FAC. ON RT. OF BLD'G & IN YARD - METALLIC SHAVES'S SPOUT 375' LONG, FITTED WITH FIRE TRIM CUT-OFF. MACH'Y'S CLOSED. SEE SOON AS FAC. SHUTS DOWN.

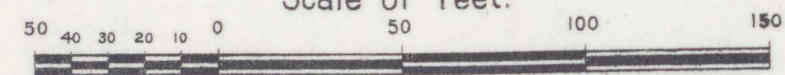
MACH'Y - 2 RE-SHAYS  
 5 SHIP  
 3 CUT-OFF &  
 3 PLANERS  
 1 PRINTER  
 2 MITCHELLS.

SCOUR ARE IN CUT-OFF LOCATED HERE THEY IS CLOSED AS SOON AS FAC. SHUTS DOWN.

Vacant.

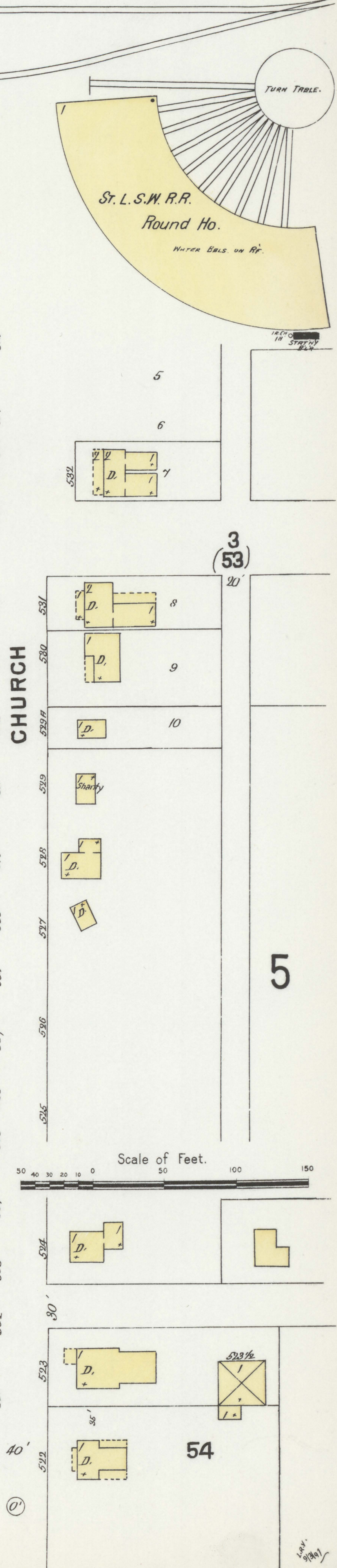
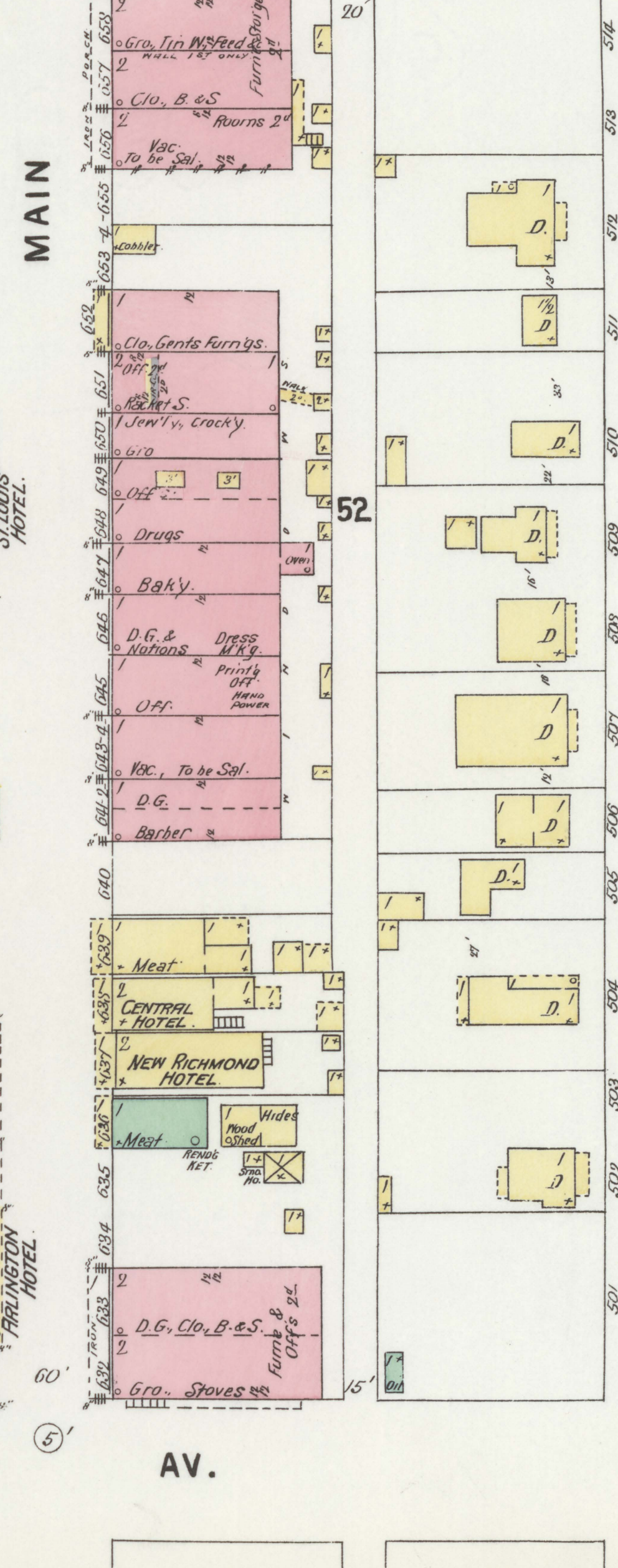
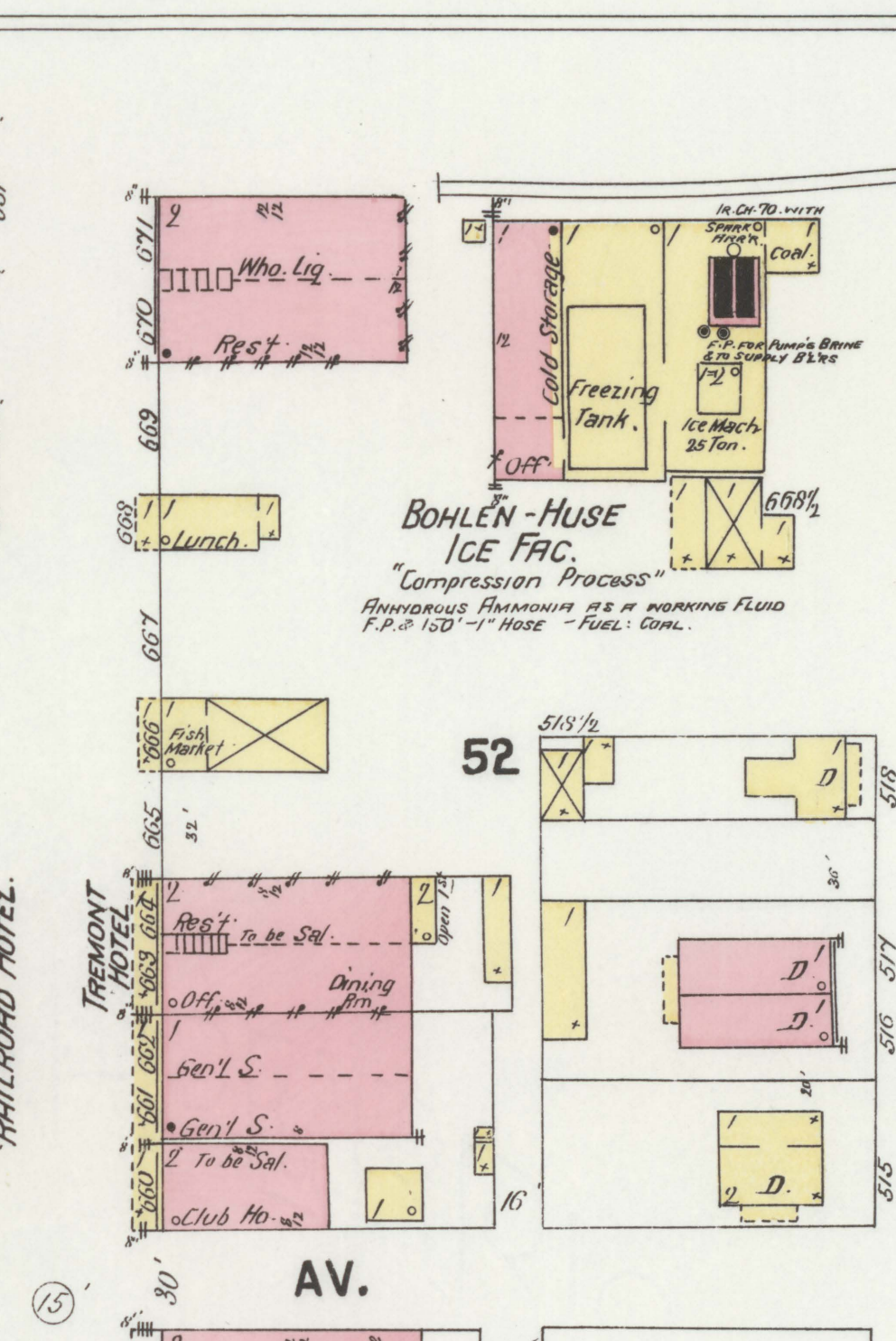
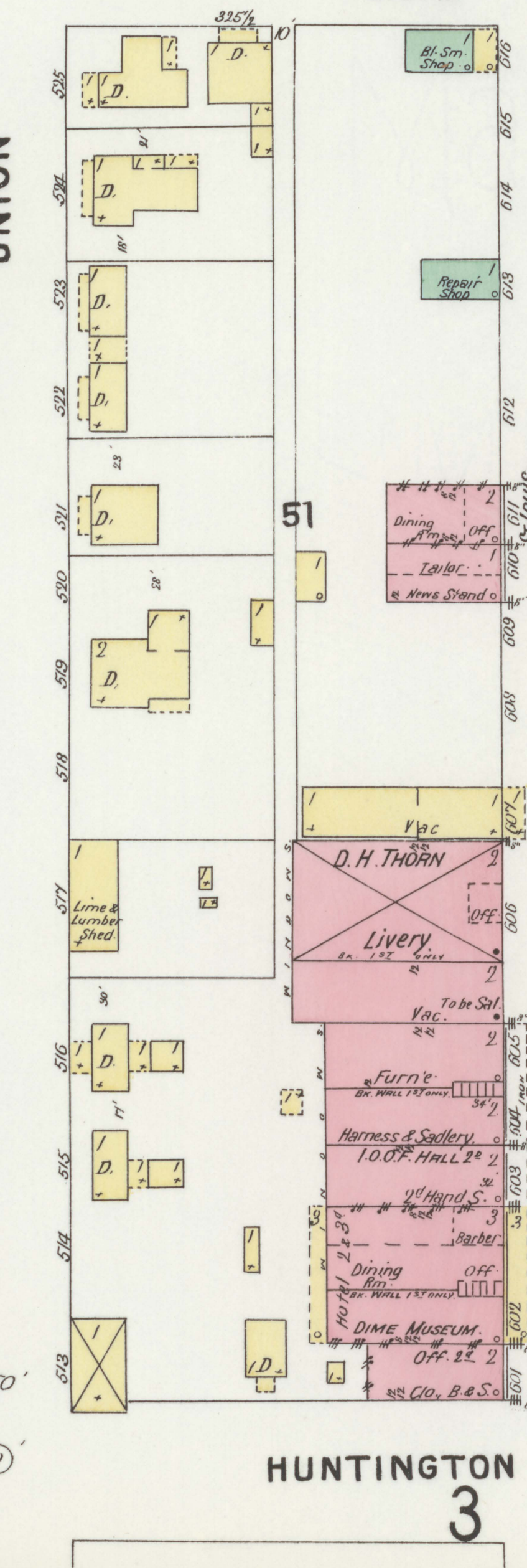
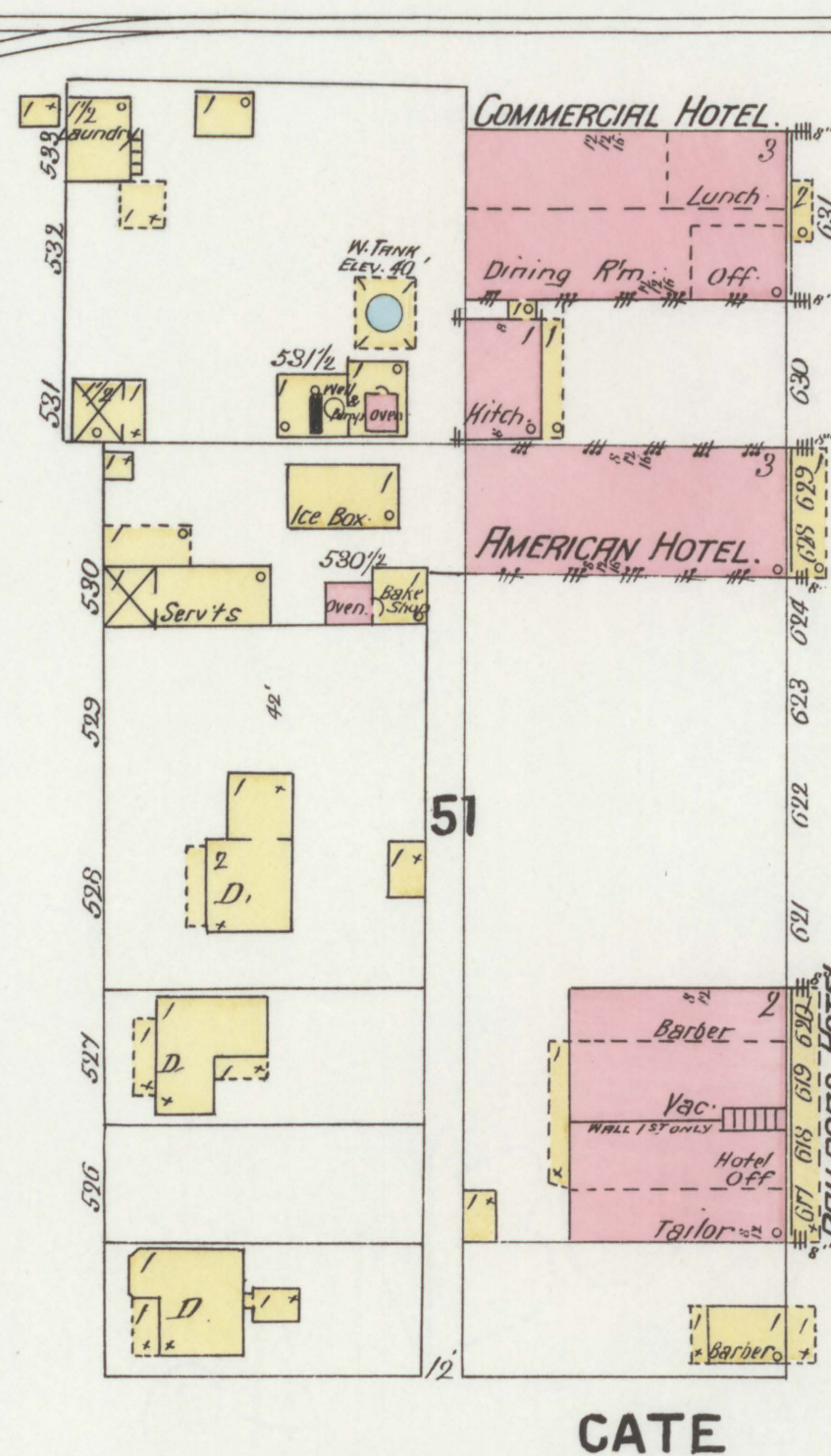
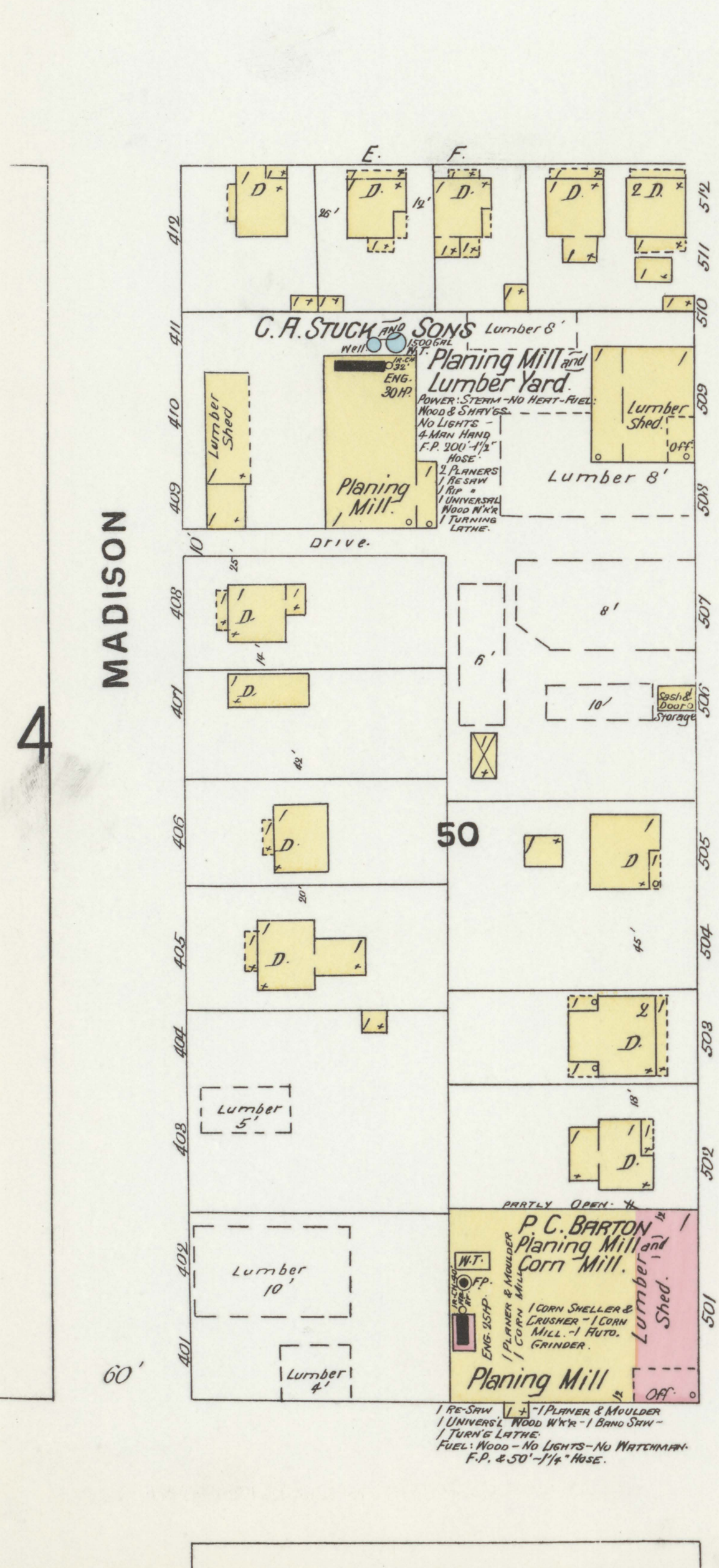
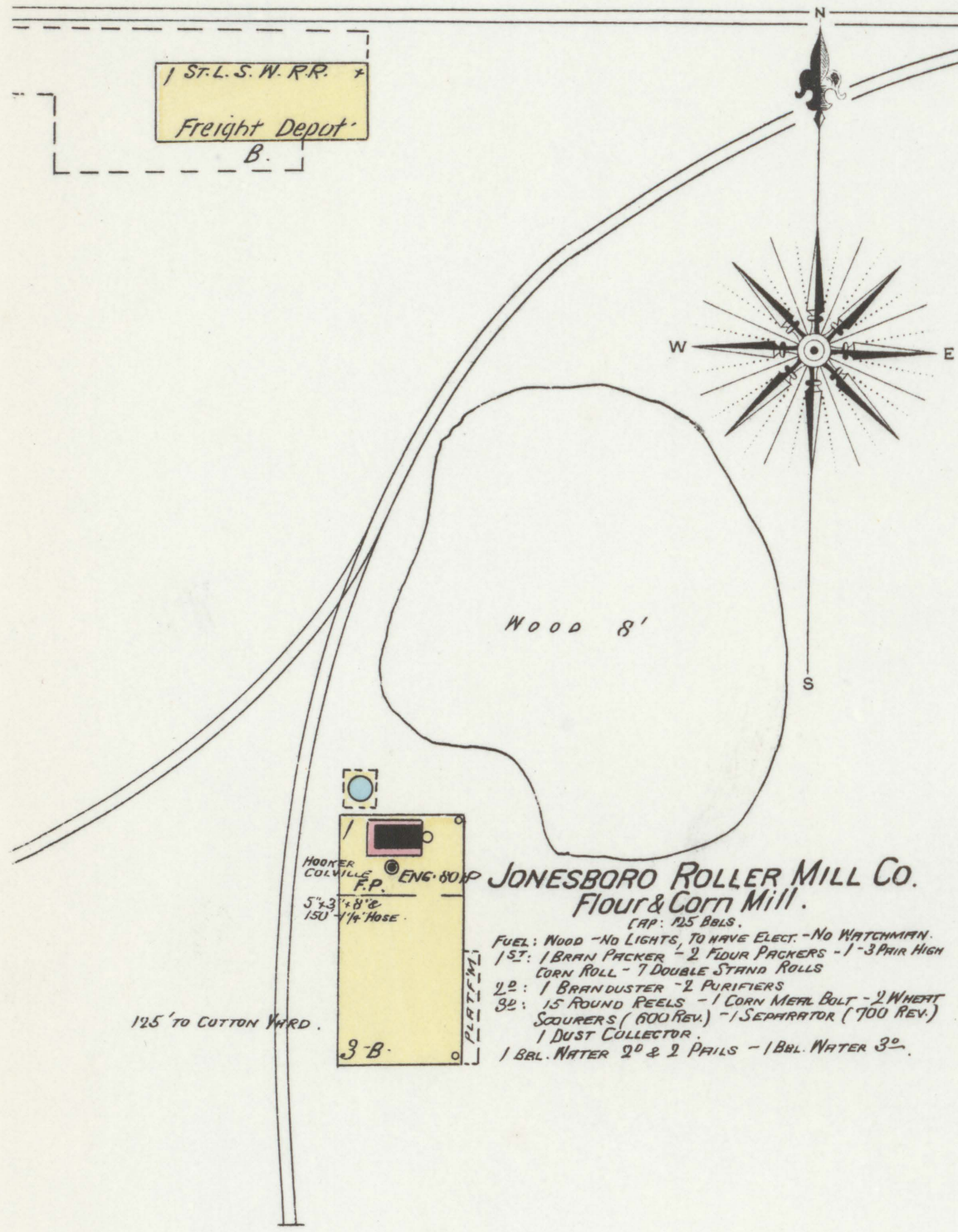


Scale of Feet.





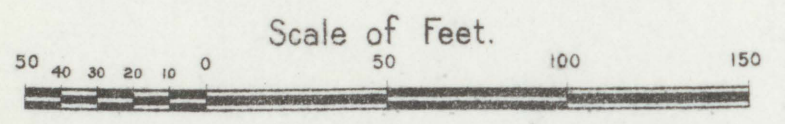
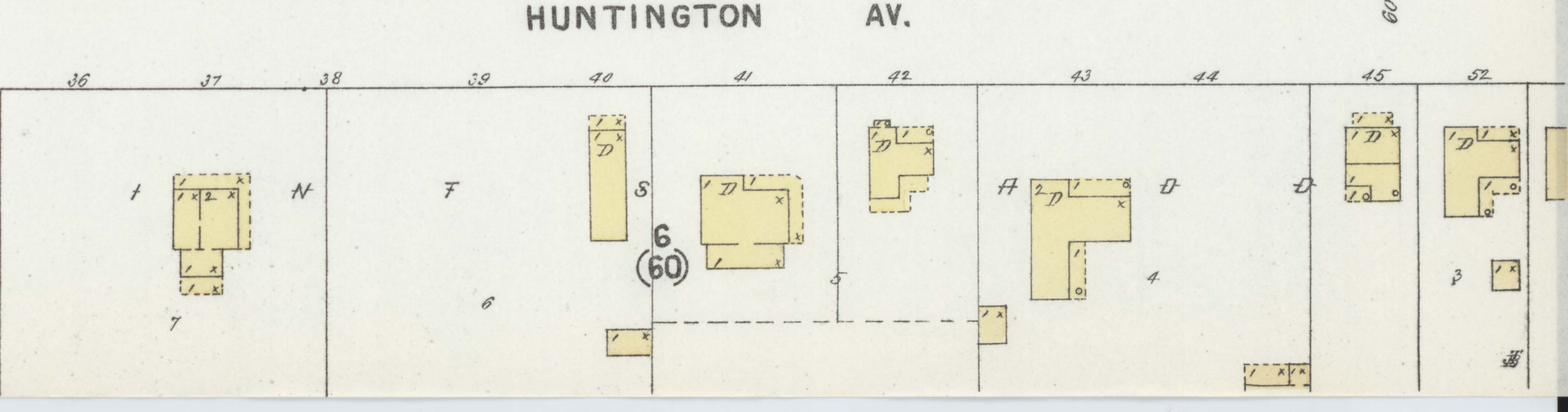
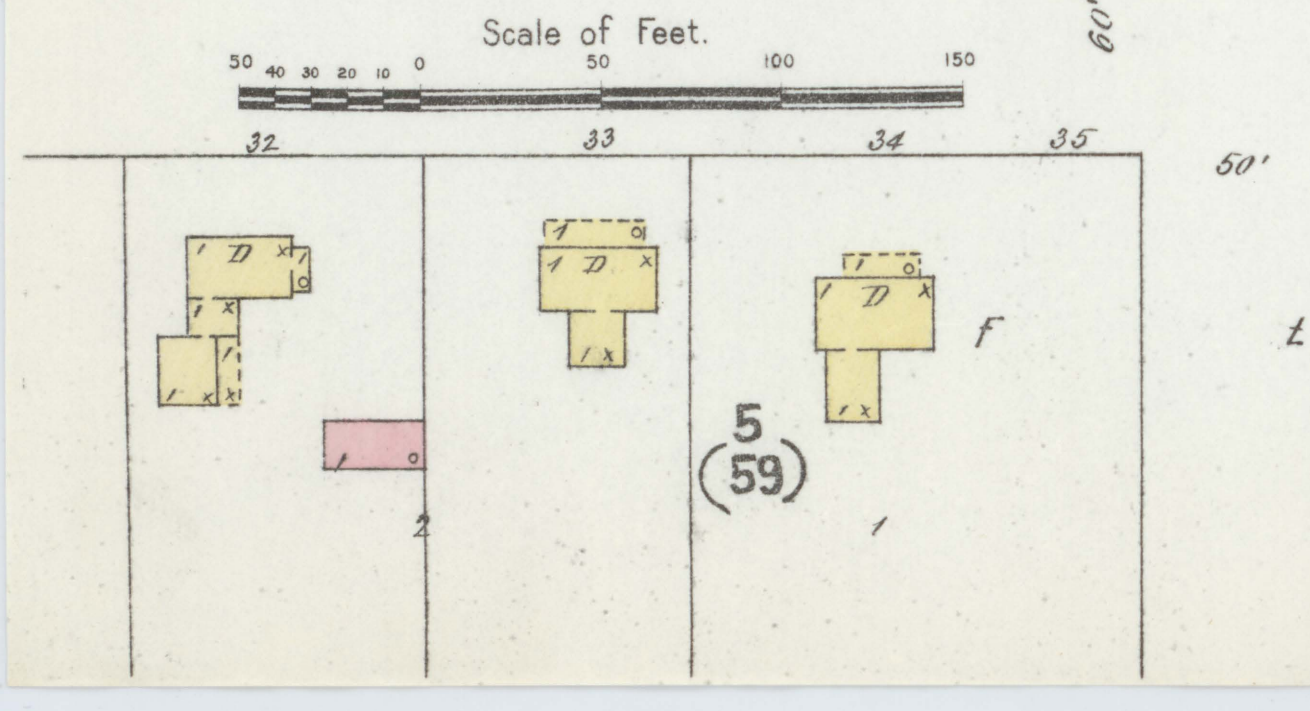
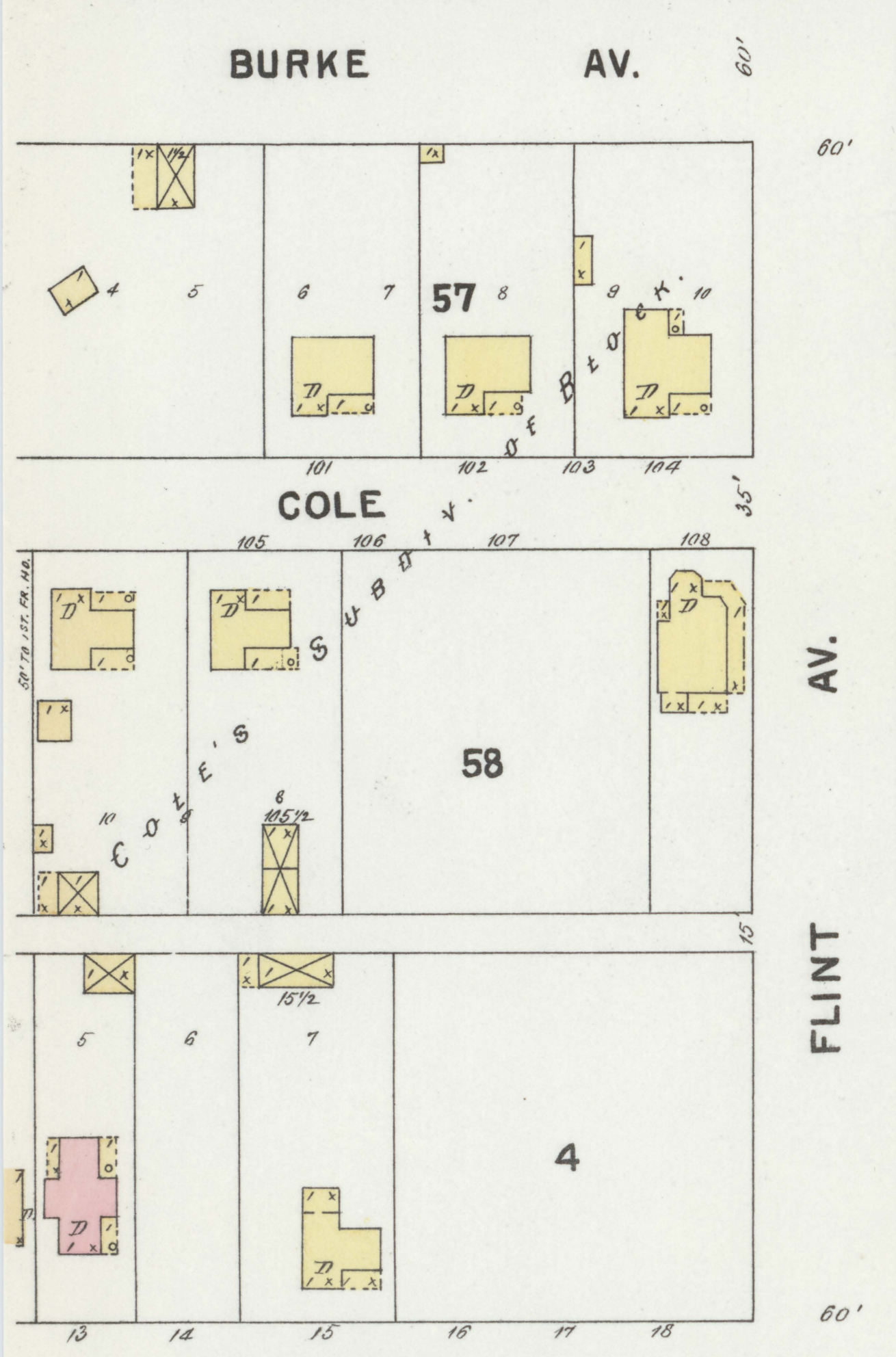
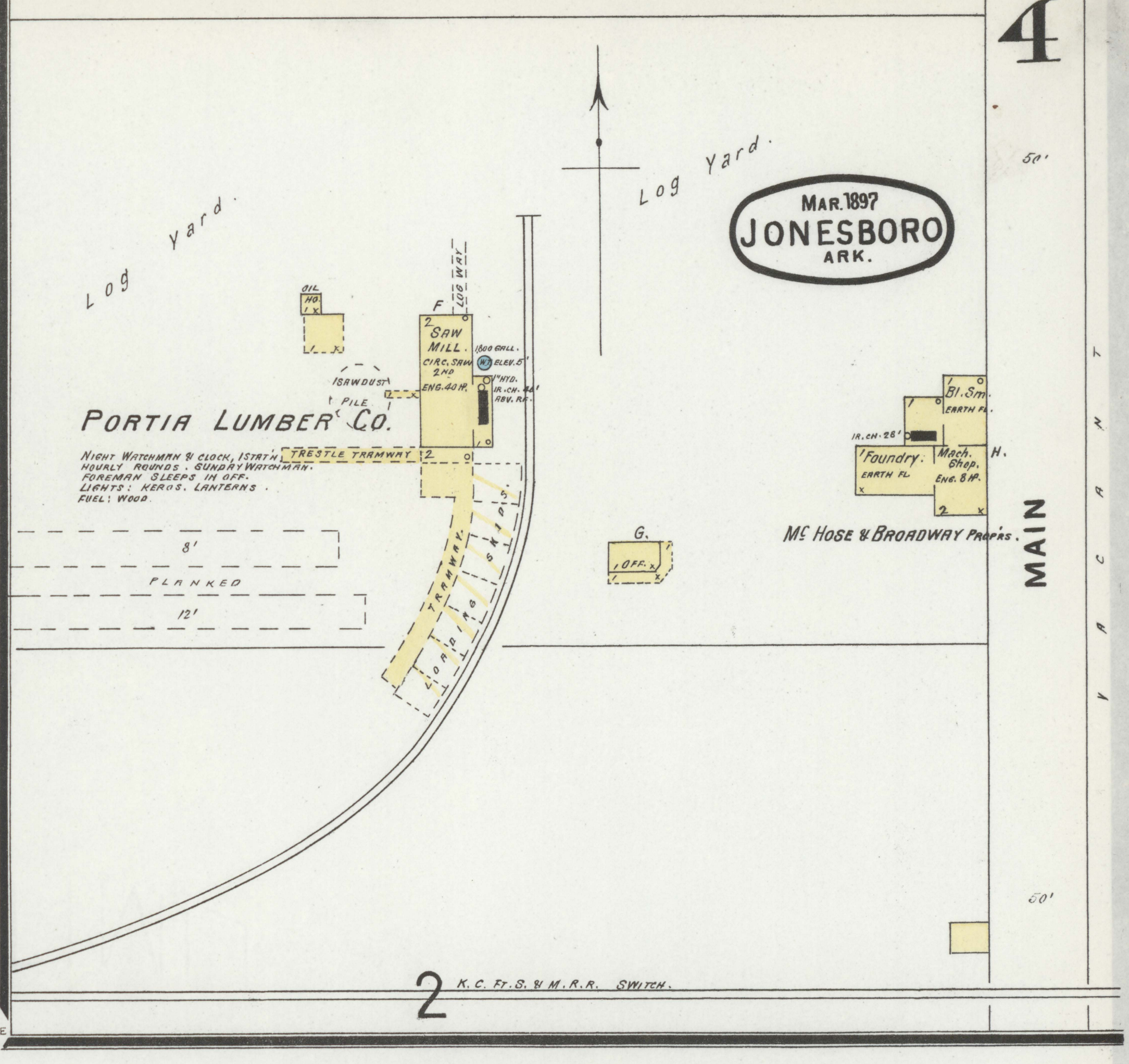
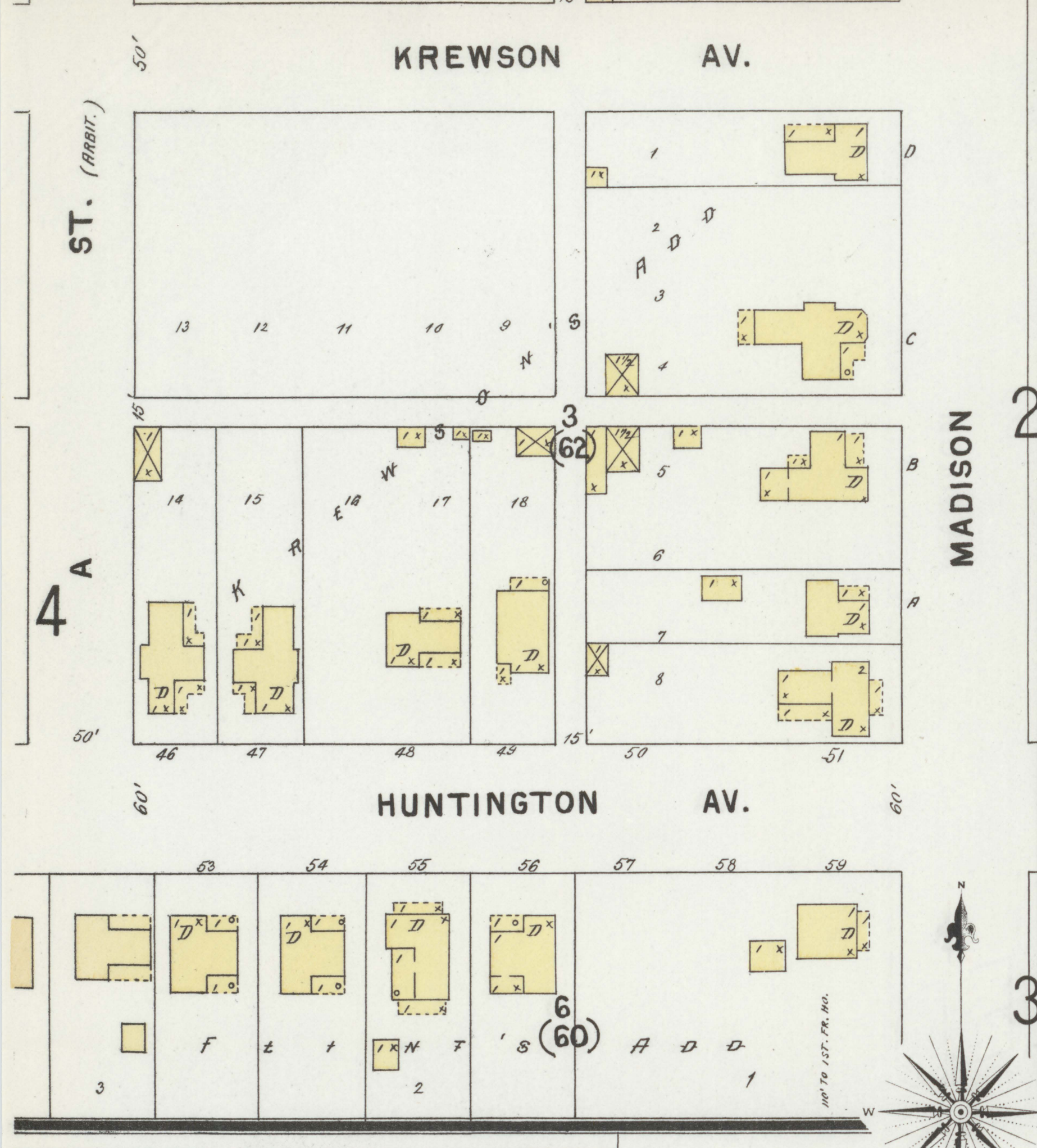
MAR. 1897  
JONESBORO  
ARK.



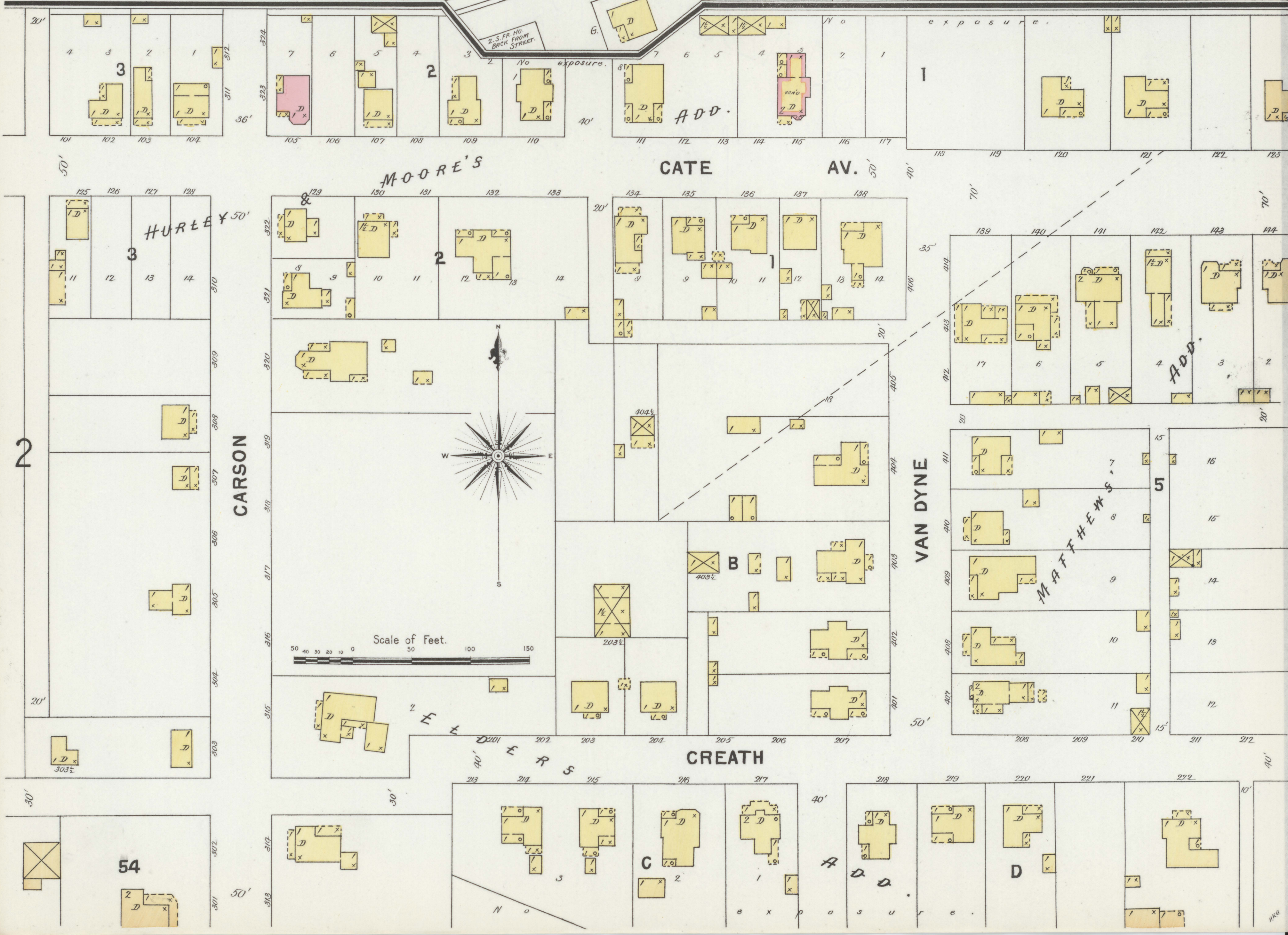
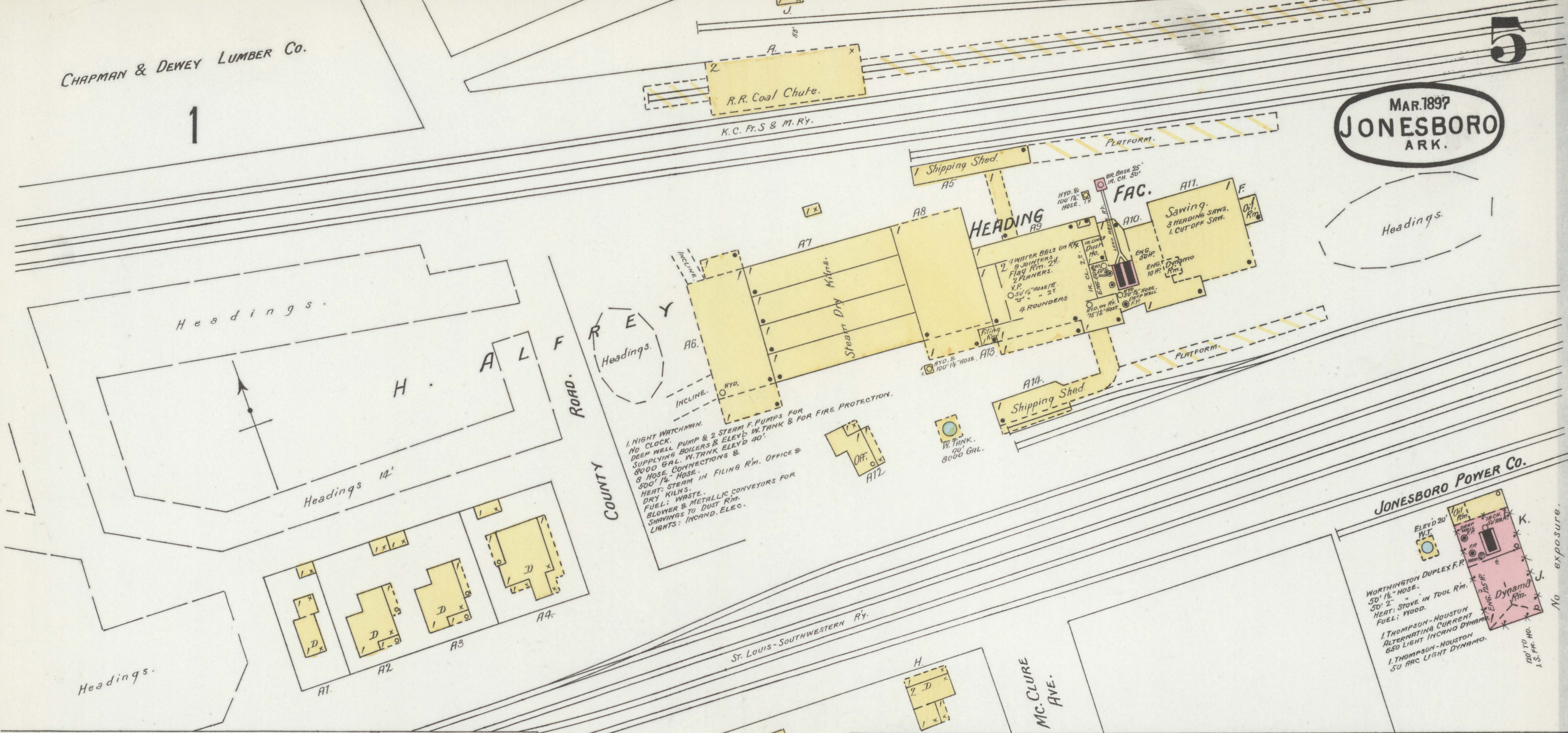




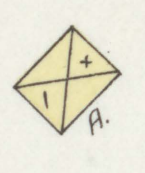
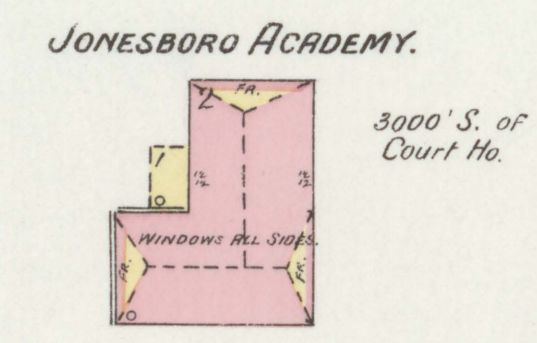
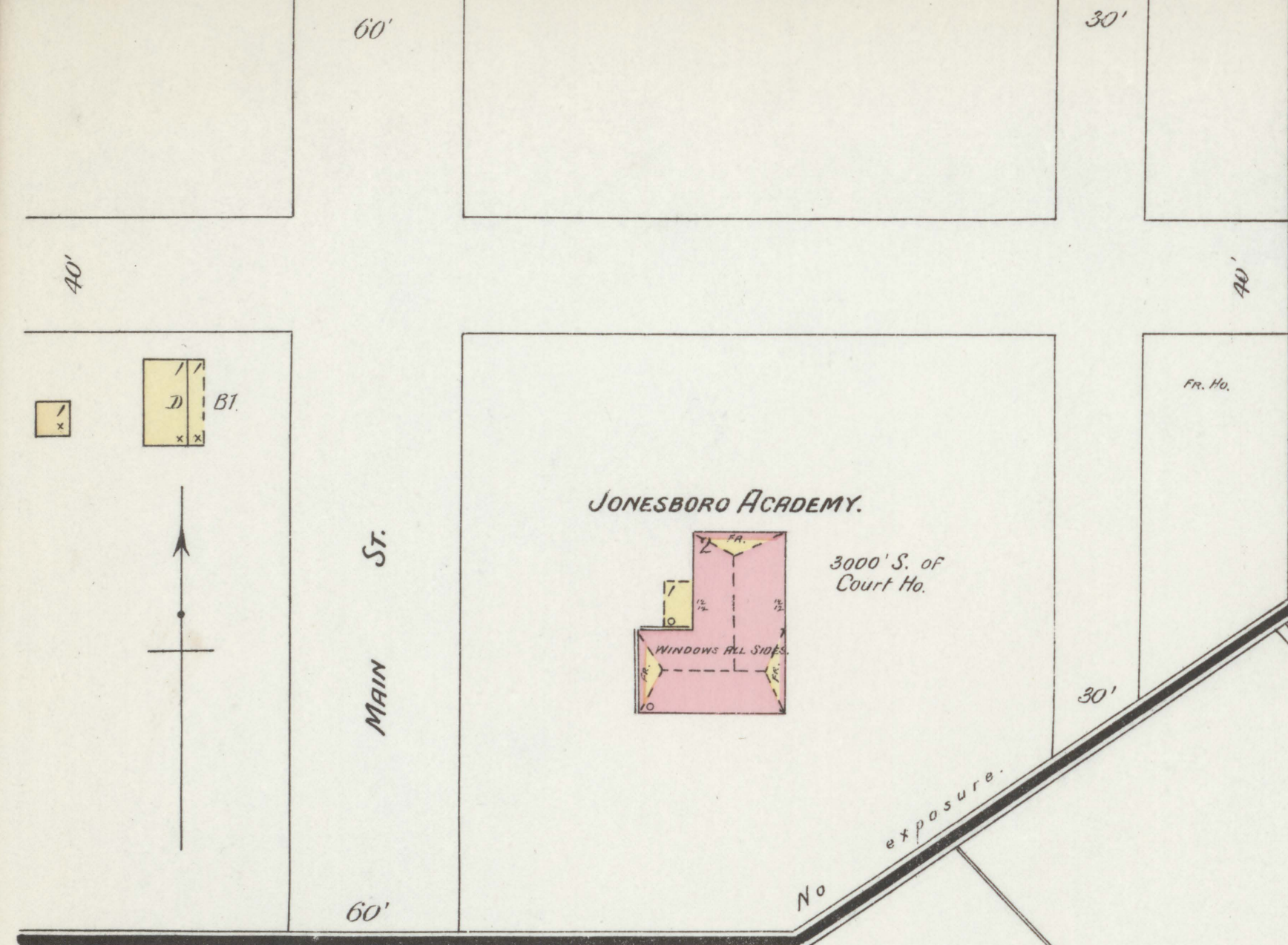
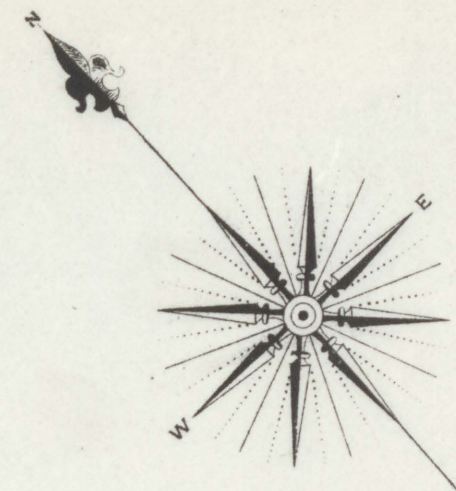












WATER & OIL INTERMEDIATE TO THE  
STAVE MILL. THE MILL IS A  
STEEL BUILDING 100 FEET LONG  
& 40 FEET WIDE. IT HAS A  
STEEL ROOF & IS OPEN AT  
BOTH ENDS. THE MILL IS  
DRIVEN BY A STEAM ENGIN  
WITH A HORSE POWER OF 100.  
THE MILL IS OWNED BY THE  
SPRINGFIELD LUMBER &  
COOPERAGE CO.

HARDWOOD CO.  
NIGHT WATCHMAN & CLOCK  
STAVES & BOLTS  
STAVE MILL  
STAVE JOINTERS  
& STAVE BOOKERS  
STAVE PLANERS  
& STAVE GRINDERS  
STAVE SAW  
& CUTTING SAW  
STAVE JOINTERS  
& STAVE BOOKERS

STAVE MILL.  
1 MILL & SUNDRY MACHINERY  
2 CLOCKS - 1 STATION EACH  
FOURLY RUNNERS  
3000 GALS. W. TANK  
OUTSIDE AND 8 100' W. TANK  
FUEL CONDUIT 20'  
NO LEAKS  
1 BARREL SAW  
& 2 SPARE SAWS  
& STAVE JOINTERS  
& STAVE BOOKERS

